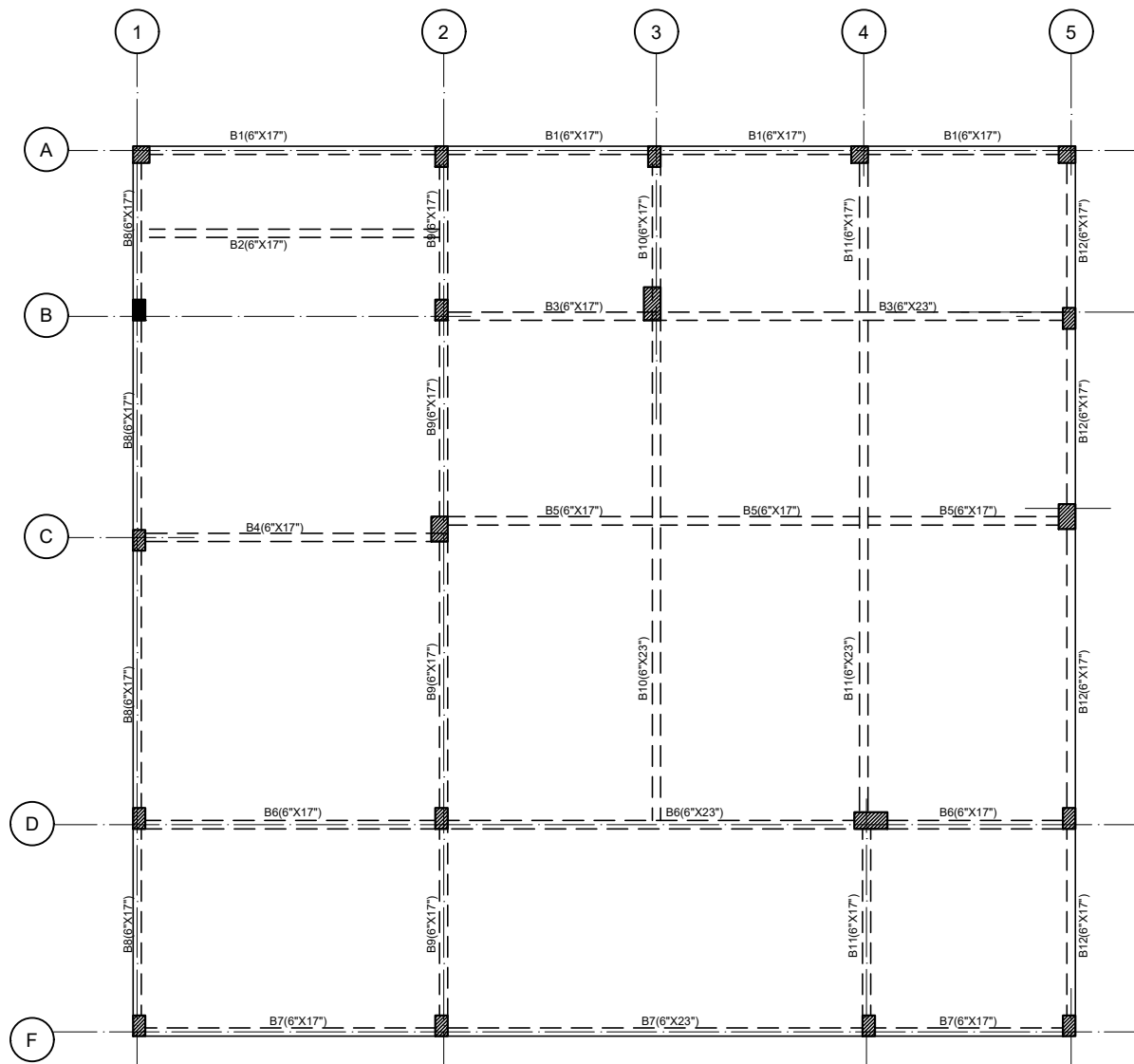


SCHEDULE OF SLABS					
SLAB MARK	THICKNESS	TYPE	REINFORCEMENT STEEL AT		
			SHORT SPAN	LONG SPAN	
S1	5"	+	80 @ 6" C/C	80 @ 8" C/C	
S2	5"	-	100 @ 5" C/C	80 @ 8" C/C	
S3	5"	+	80 @ 7" C/C	80 @ 8" C/C	
S4	5"	+	80 @ 5" C/C	80 @ 7" C/C	
S5	5"	-	80 @ 5" C/C	80 @ 10" C/C	

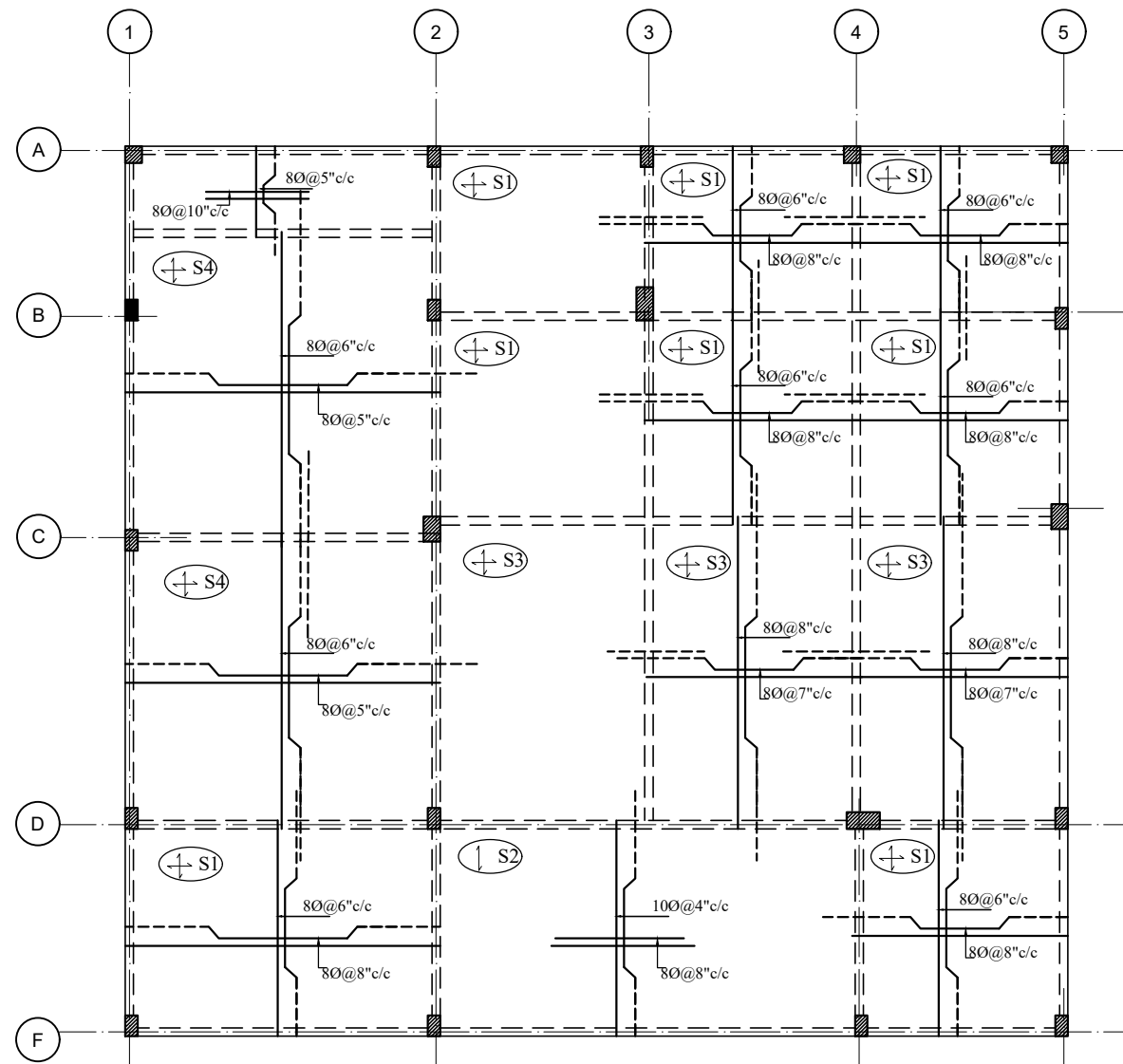
General Notes : --

1. Use M25 (1:1:2) grade for columns & M20 (1:1.5:3) for footings, slab & Beams
2. Use FE500 grade tor steel.
3. Provide clear cover of 2" for footings & 1.6" for columns.
4. S.B.C of the Soil is taken as 300kn/m2.
5. Footings are designed for Ground floor only.
6. Provide clear cover of 1" for beams
7. Read horizontal beams from left to right & vertical from bottom to left.
8. crank +ve bars at L/4 th of span & extend -ve bars L/5 th of span.
9. Do not over lap bottom rods at center and top rods at support.

Note :- Refer architect center line drawing for center line dimensions.



BEAM LAY-OUT



SLAB DETAILS

DESCRIPTION		DATE	
Client	MODI PROPERTIES & INVESTMENTS PVT.LTD		
Project	PROPOSED FARM HOUSE AT YENKAPALLY		
STRUCTURAL CONSULTANT	KULKARNI CONSULTANT'S STRUCTURAL ENGINEERS, ARCHITECTS & PROJECT CONSULTANTS #216, KUBERA TOWER'S, NARAYAN GUDA, HYDERABAD. CONTACT NO'S:- 04023223891, 99246343724, 99246343720.		
DATE	4-12-2016	CLUB HOUSE (SERENE FARMS)	
DEALT BY	PAWAN	TITLE: GROUND FLOOR SLAB DETAILS	
DESIGN BY	SRIKANTH		
CHECKED BY	KULKARNI		
APPROVED		DWG. NO. KC/SF/SD/3	REV. No. 0



PRODUCED BY AN AUTODESK STUDENT VERSION

PRODUCED BY AN AUTODESK STUDENT VERSION