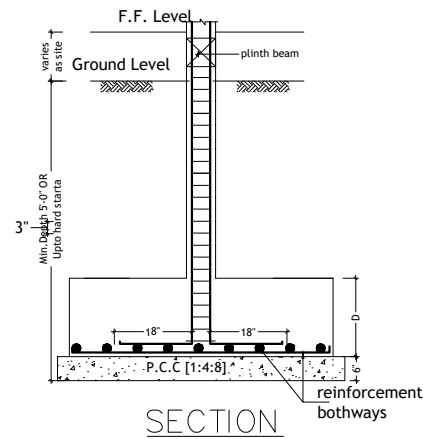
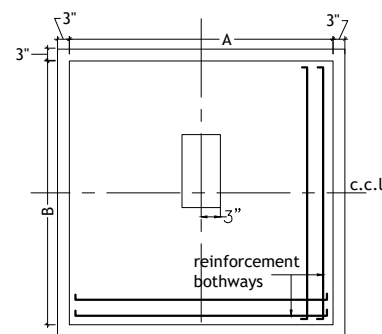


COLUMN & FOOTING
DETAILS
(NOTE :- RAFER ARCHITECT CENTER LLINE
DRAWING)

COLUMN DETAIL'S					FOOTING DETAIL'S				
Type	Mix	Size	Section	Reinforcement	Type	A	B	D	Reinforcement
C1	M 25	12"X9"		#8No-12Ø #8Ø@8"c/c	F1	4'-6"	4'-6"	18"	#10Ø@5"c/c
C2	M 25	15"X15"		#6No-20Ø #4No-16Ø #8Ø@8"c/c					
C3	M 25	15"X15"		#12No-12Ø #8Ø@8"c/c					

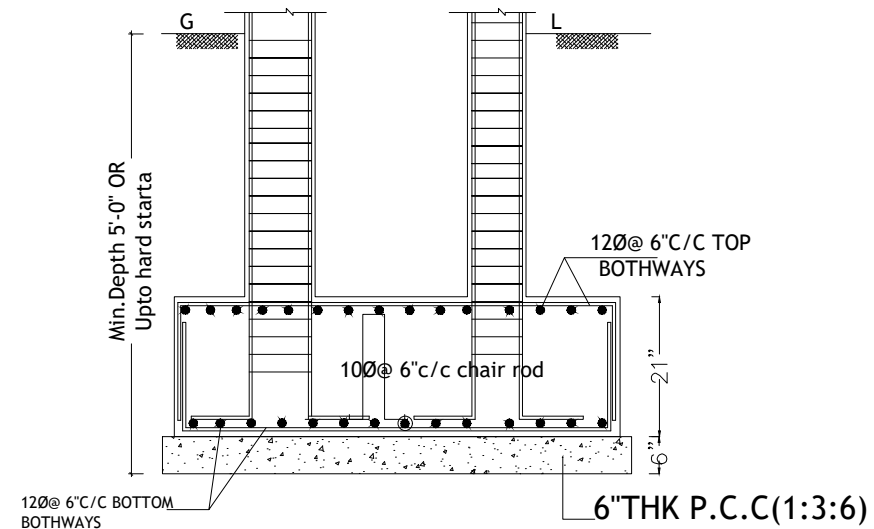


SECTION

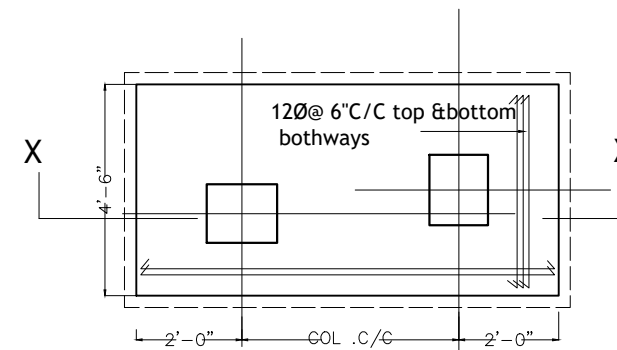


PLAN

FOOTING DETAILS



SECTION X-X



PLAN

General Notes :--

1. Use M25 (1:1:2) grade for columns & M20 (1:1.5:3) for footings, slab & Beams
2. Use FE500 grade tor steel.
3. Provide clear cover of 2" for footings & 1.5" for columns.
4. S.B.C of the Soil is taken as
5. Footings are designed for Ground floor.
6. Provide clear cover of 1" for beams
7. Read horizontal beams from left to right & vertical from bottom to left.
8. crank +ve bars at L/4 th of span & extend -ve bars L/5 th of span.
9. Do not over lap bottom rods at center and top rods at support.
10. Slab thickness

DESCRIPTION DATE



Client	MODI PROPERTIES & INVESTMENTS PVT.LTD
Project	PROPOSED FARM HOUSE AT YENKAPALLY
STRUCTURAL CONSULTANT	KULKARNI CONSULTANT'S STRUCTURAL ENGINEERS, ARCHITECTS & PROJECT CONSULTANT'S #216, KUBERA TOWER'S, NARAYAN GUJA, HYDRABAD. CONTACT NO'S:- 04023223891, 09246343724, 09246343720.
DATE	20-8-2016
DEALT BY	PAWAN
DESIGN BY	
CHECKED & APPROVED	KULKARNI
VILLA	
TITLE:	COLUMN & FOOTING CENTER LINE PLAN
DWG. NO.	KC/FH/SD/1
REV. No.	0