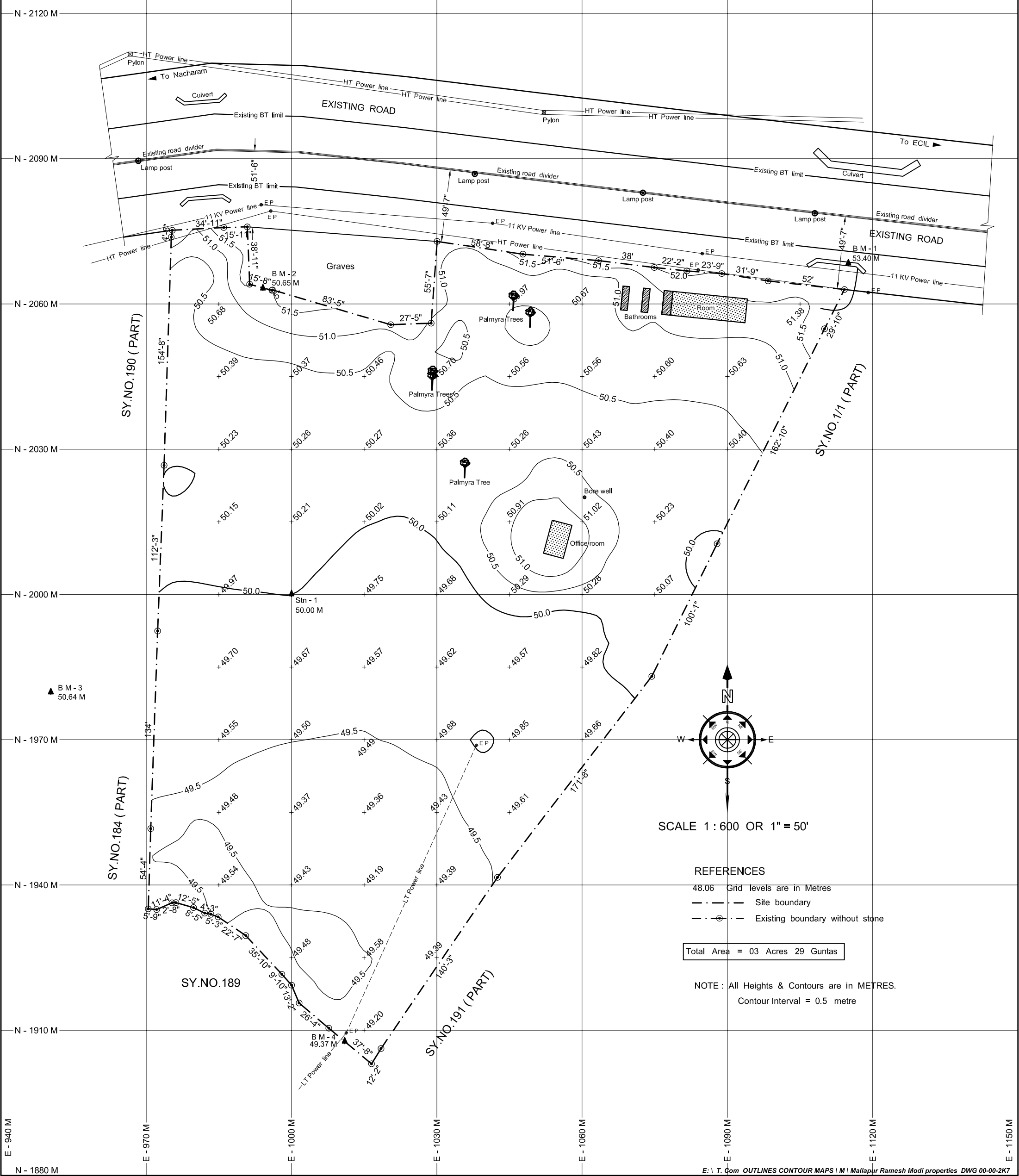


**TOPO MAP OF SY.NOS.2/1/1(P), 184 (P), 190 (P) & 191 (P) SITUATED AT MALLAPUR VILLAGE,
GHMC KAPRA CIRCLE, RANGA REDDY DISTRICT.**



SCALE 1 : 600 OR 1" = 50'

- REFERENCES**
- 48.06 Grid levels are in Metres
 - - - Site boundary
 - · - Existing boundary without stone

Total Area = 03 Acres 29 Guntas

NOTE : All Heights & Contours are in METRES.
Contour interval = 0.5 metre