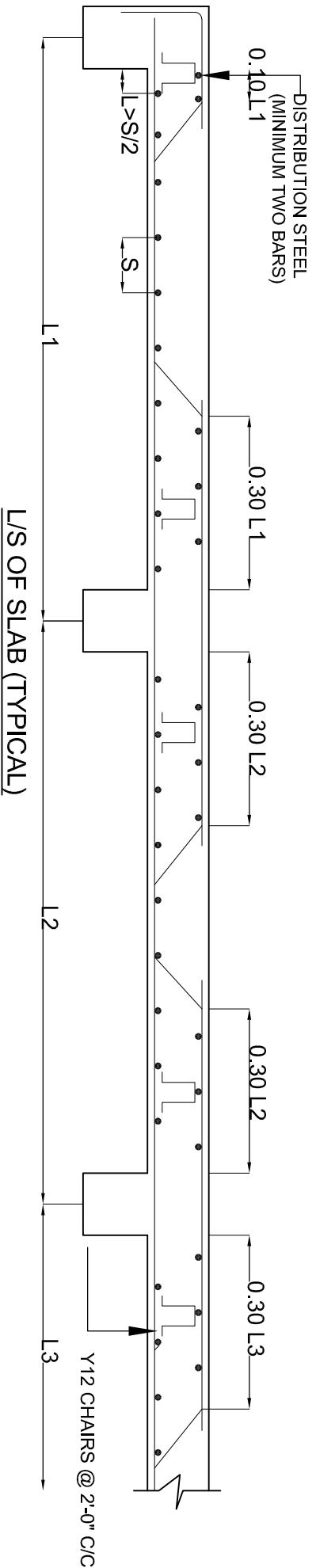
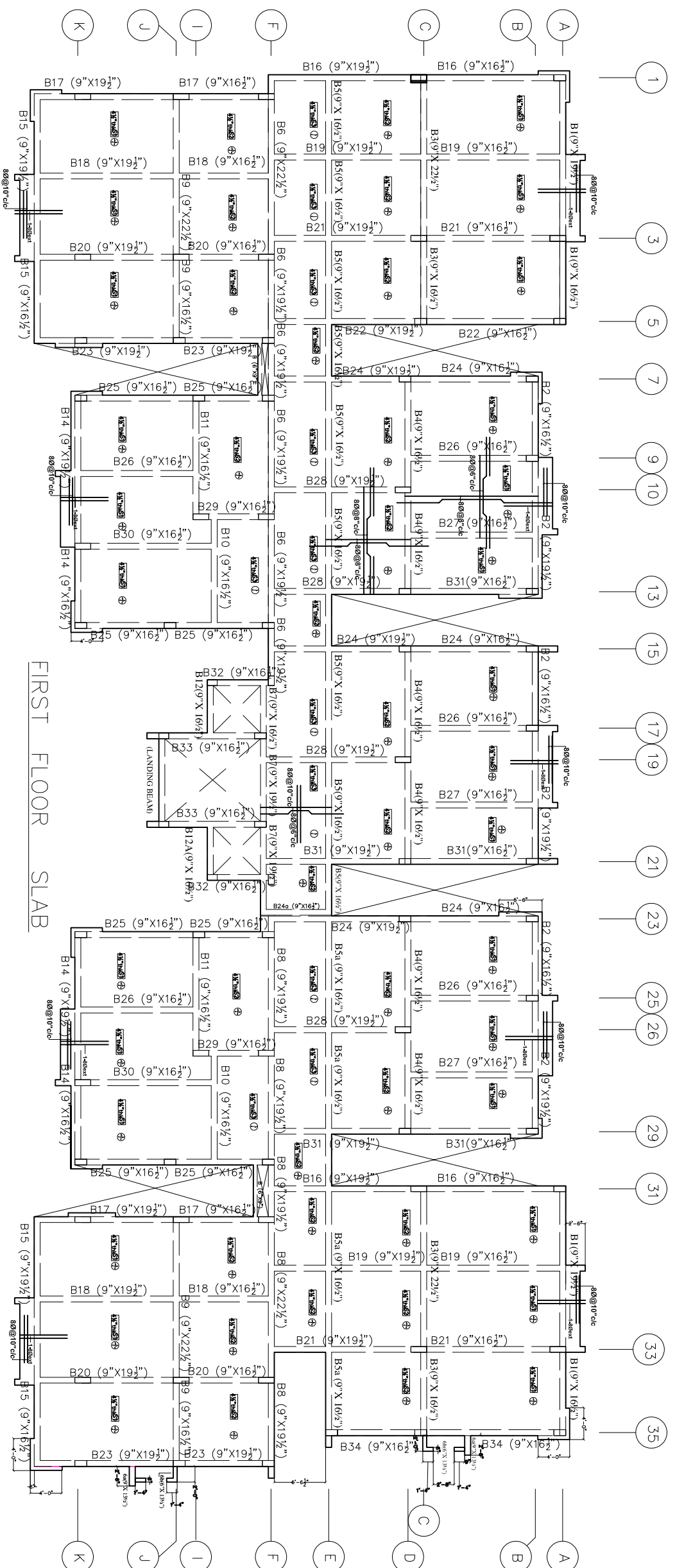


NOTE:
 * ALL SLABS ARE 4 1/2" THK UNLESS AND UNTILL SPECIFIED
 * BEAM DEPTHS ARE INCLUDING SLAB THICKNESS
 * REFER ARCH. DRAWING FOR SLAB PROJECTION DIMENSIONS



GENERAL NOTES

1. USE M25 (1:1:2) GRADE CONCRETE FOR COLUMNS & M20 (1:1.5:3) FOR BEAMS & SLAB
2. USE F500 GRADE TOR STEEL.
3. PROVIDE CLEAR COVER OF 1.5" FOR COLUMNS, 1" FOR BEAMS & 3/4" FOR SLAB
4. PROVIDE 1" CAMBER AT FREE END FOR CANTILEVER BEAMS & SLABS.
5. IN SLAB EXTEND -VE STEEL UPTO 0.30L FROM FACE OF SUPPORT.
6. DO NOT PROVIDE EXTRA REINFORCEMENT AT SIMPLY SUPPORTS.
7. LAP LENGTH 48 D (D-IS THE DIA OF THE BAR) IN COMPRESSION.
8. LAP LENGTH 52 D (D-IS THE DIA OF THE BAR) IN TENSION.
9. ONLY FIGURED DIMENSIONS SHALL BE FOLLOWED.
10. ALL THE DIMENSIONS ARE IN INCHES & FEET.
11. DO NOT SCALE THE DRAWING.
12. REFER ARCHITECT DRAWING FOR CENTER LINE DIMENSIONS.

REV. NO.	DESCRIPTION	DATE
1		



GOOD FOR REFERENCE

Owners & Developers:
 VISTA HOMES BLOCK - (E)

Architects & Engineers:
KULKARNI CONSULTANTS
 STRUCTURAL ENGINEERS, ARCHITECTS & PROJECT CONSULTANTS
 #210, KUBERA TOWERS, WAKHANI COLONY, HYDRABAD.
 CONTACT NO: 9848343971, 9246343972, 9246343973

SCALE	N.T.S	DWG. NO.	KC/WH/SD/E/	REV. NO.	0
DATE:	02-05-2019	TITLE:	FIRST FLOOR SLAB		
DRAWN BY:	SRINISH				
DESIGNED BY:	SRANTOSH				
CHECKED BY:					
APPROVED BY:	KULKARNI				