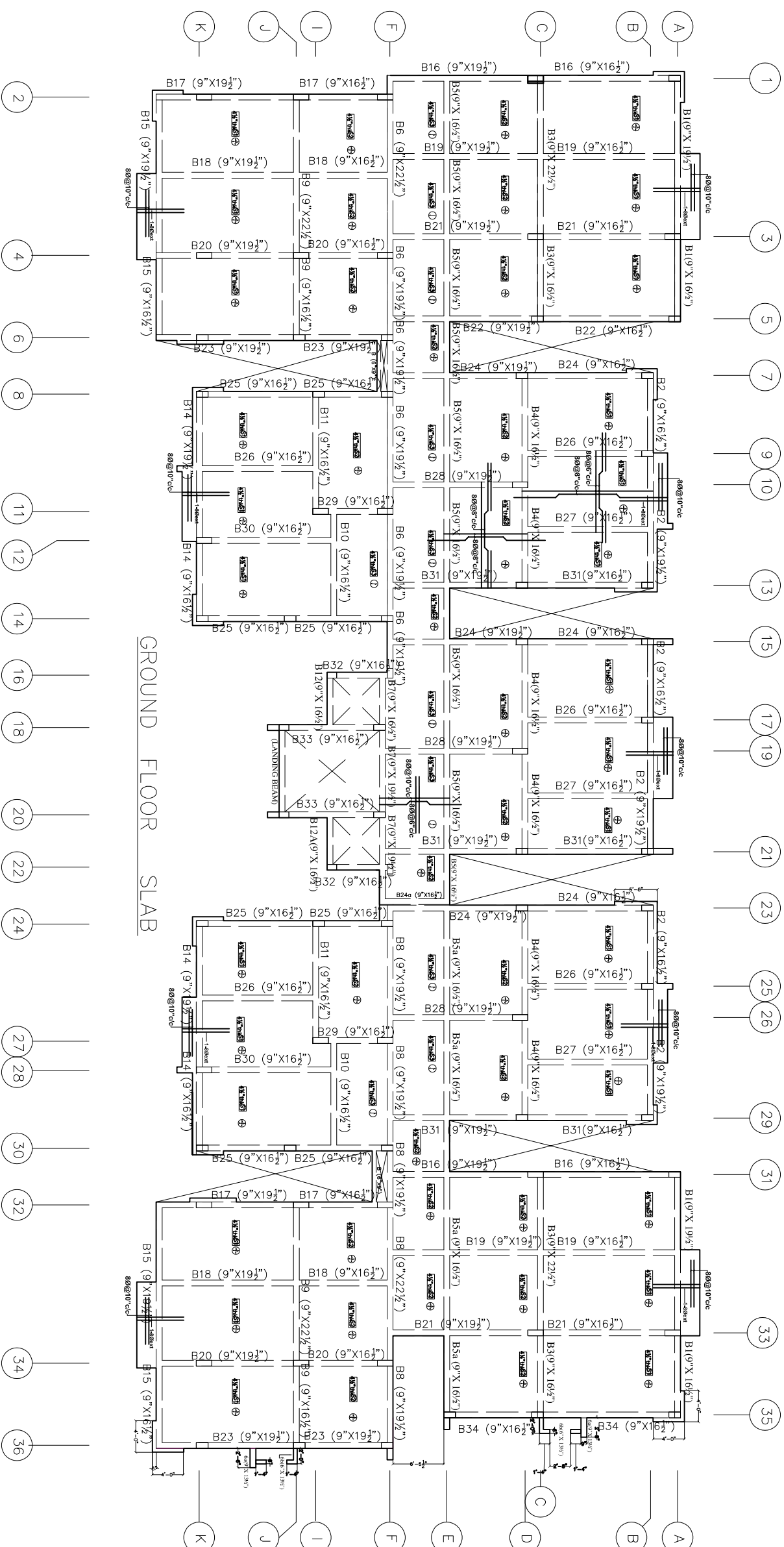
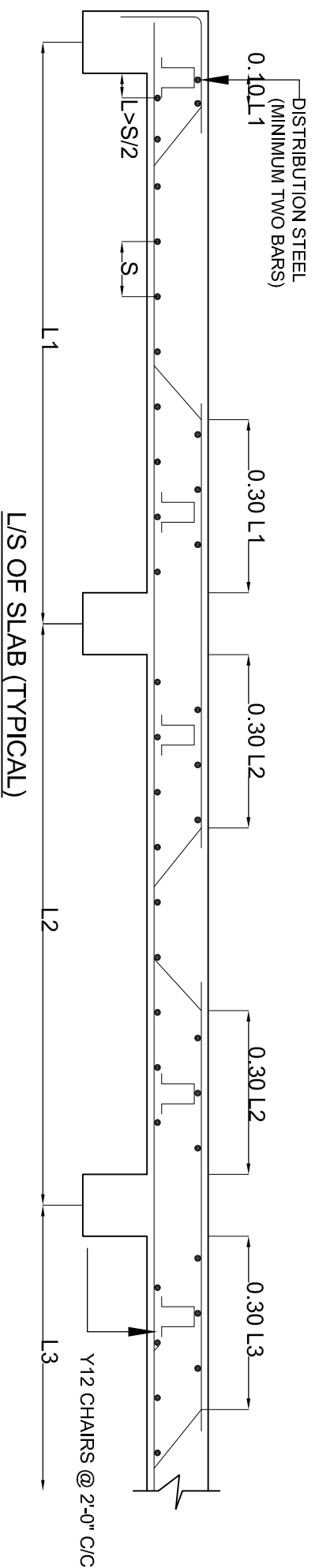


NOTE:
 * ALL SLABS ARE 4 1/2" THK UNLESS AND UNTILL SPECIFIED
 * BEAM DEPTHS ARE INCLUDING SLAB THICKNESS
 * REFER ARCH. DRAWING FOR SLAB PROJECTION DIMENSIONS



GROUND FLOOR SLAB



GENERAL NOTES

1. USE M25 (1:1:2) GRADE CONCRETE FOR COLUMNS & M20 (1:1.5:3) FOR BEAMS & SLAB
2. USE F500 GRADE FOR STEEL.
3. PROVIDE CLEAR COVER OF 1.5" FOR COLUMNS, 1" FOR BEAMS & 3/4" FOR SLAB
4. PROVIDE 1" CAMBER AT FREE END FOR CANTILEVER BEAMS & SLABS.
5. IN SLAB EXTEND -VE STEEL UPTO 0.30L FROM FACE OF SUPPORT.
6. DO NOT PROVIDE EXTRA REINFORCEMENT AT SIMPLY SUPPORTS.
7. LAP LENGTH 48 D (D-IS THE DIA OF THE BAR) IN COMPRESSION.
8. LAP LENGTH 52 D (D-IS THE DIA OF THE BAR) IN TENSION.
9. ONLY FIGURED DIMENSIONS SHALL BE FOLLOWED.
10. ALL THE DIMENSIONS ARE IN INCHES & FEET.
11. DO NOT SCALE THE DRAWING.
12. REFER ARCHITECT DRAWING FOR CENTER LINE DIMENSIONS.

REV. NO.	DESCRIPTION	DATE
1		

GOOD FOR REFERENCE



Owners & Developers:
 5-4-187 / 3&4, Soham mansion, II Floor,
 H.G. Road, Sector-10, Gurgaon,
 Haryana, India. Phone: 91-1299-27544058
 E-mail: info@hodiproperties.com

Architects & Engineers:

KULKARNI CONSULTANTS
 STRUCTURAL ENGINEERS, ARCHITECTS & PROJECT CONSULTANTS
 #210, KUBERA TOWERS, MARATHI COLONY, HYDRABAD,
 INDIA. CONTACT NO: 9248332971, 9248332972, 9248332973

SCALE:	N.T.S	VISTA HOMES BLOCK - (E)
DATE:	02-05-2019	
DRAWN:	SANISH	TITLE: GROUND FLOOR SLAB
DESIGNED:	SANTOSH	DWG. NO: KC/WH/SD/E/1
CHECKED:		REV. NO: 0
APPROVED:	KULKARNI	