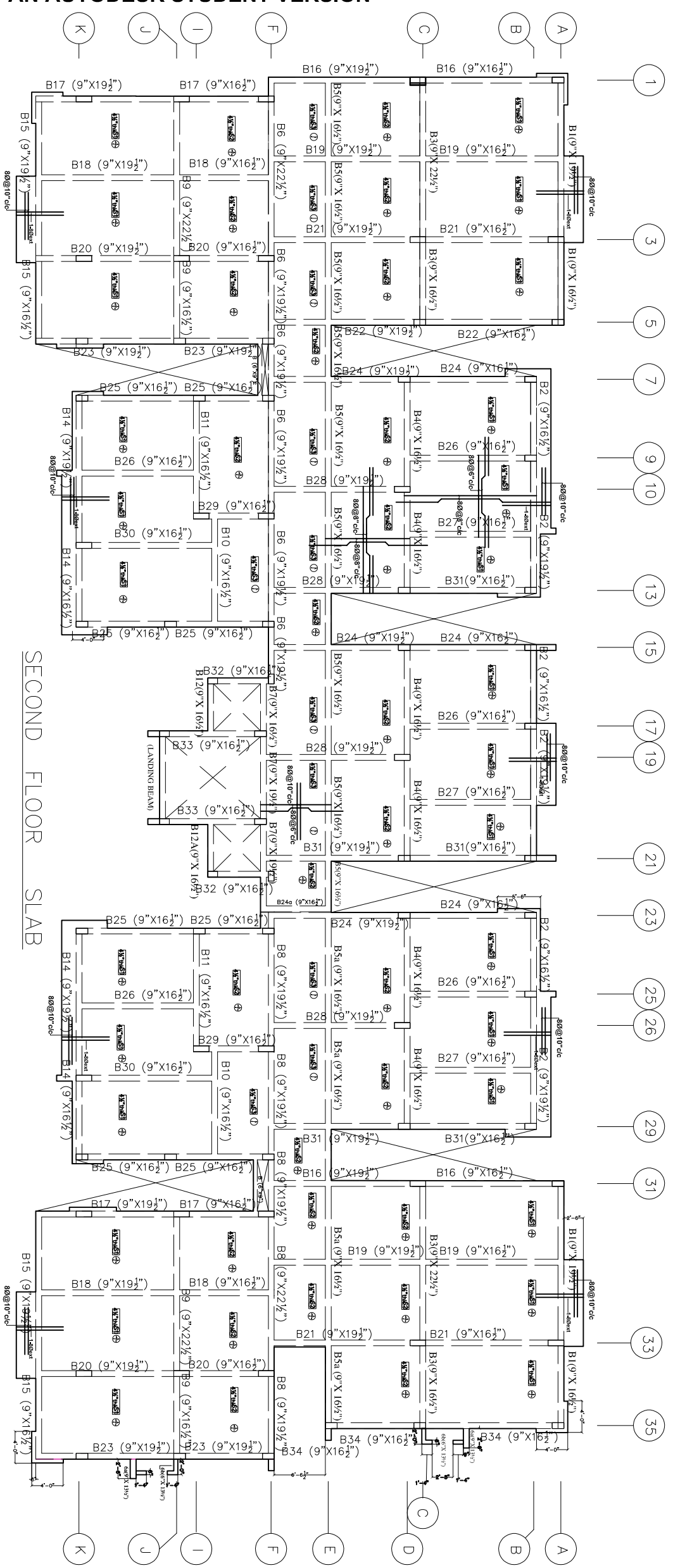
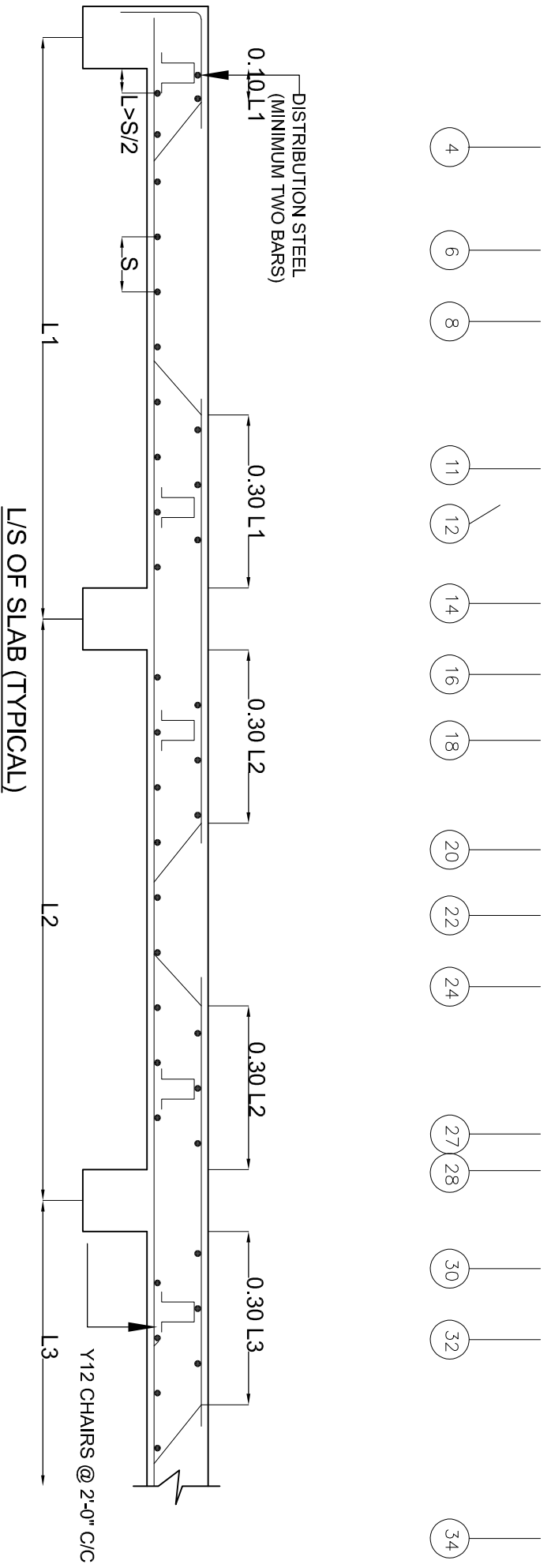


NOTE:
 * ALL SLABS ARE 4 1/2" THK UNLESS AND UNTILL SPECIFIED
 * BEAM DEPTHS ARE INCLUDING SLAB THICKNESS
 * REFER ARCH. DRAWING FOR SLAB PROJECTION DIMENSIONS



SECOND FLOOR SLAB



GENERAL NOTES

1. USE M25 (1:1:2) GRADE CONCRETE FOR COLUMNS & M20 (1:1.5:3) FOR BEAMS & SLAB
2. USE F500 GRADE TOR STEEL.
3. PROVIDE CLEAR COVER OF 1.5" FOR COLUMNS , 1"FOR BEAMS & 3/4" FOR SLAB
4. PROVIDE 1" CAMBER AT FREE END FOR CANTILEVER BEAMS & SLABS.
5. IN SLAB EXTEND -VE STEEL UPTO 0.30L FROM FACE OF SUPPORT.
6. DO NOT PROVIDE EXTRA REINFORCEMENT AT SIMPLY SUPPORTS.
7. LAP LENGTH 48 D (D-IS THE DIA OF THE BAR) IN COMPRESSION.
8. LAP LENGTH 52 D (D-IS THE DIA OF THE BAR) IN TENSION.
9. ONLY FIGURED DIMENSIONS SHALL BE FOLLOWED.
10. ALL THE DIMENSIONS ARE IN INCHES & FEET.
11. DO NOT SCALE THE DRAWING.
12. REFER ARCHITECT DRAWING FOR CENTER LINE DIMENSIONS.

REV. NO.	DESCRIPTION	DATE
1		



GOOD FOR REFERENCE

OWNERS & DEVELOPERS:
 VISTA HOMES BLOCK - (E)

ARCHITECTS & ENGINEERS:
KULKARNI CONSULTANTS
 STRUCTURAL ENGINEERS, ARCHITECTS & PROJECT CONSULTANTS
 #216, KUBERN TOWERS, WAKHARI ROAD, ANDHERWADI,
 MUMBAI 400052. (INDIA)
 CONTACT NO. 9822323232, 9822323232, 9822323232
 E-mail: info@mkcdiiproject.com

SCALE: N.T.S.

DATE: 02-05-2019

DRAWN BY: SANJIV

DESIGNED BY: SANTOSH

CHECKED BY: KULKARNI

TITLE: SECOND FLOOR SLAB

DWG. NO.: KC/WH/SD/E/

REV. NO.: 0