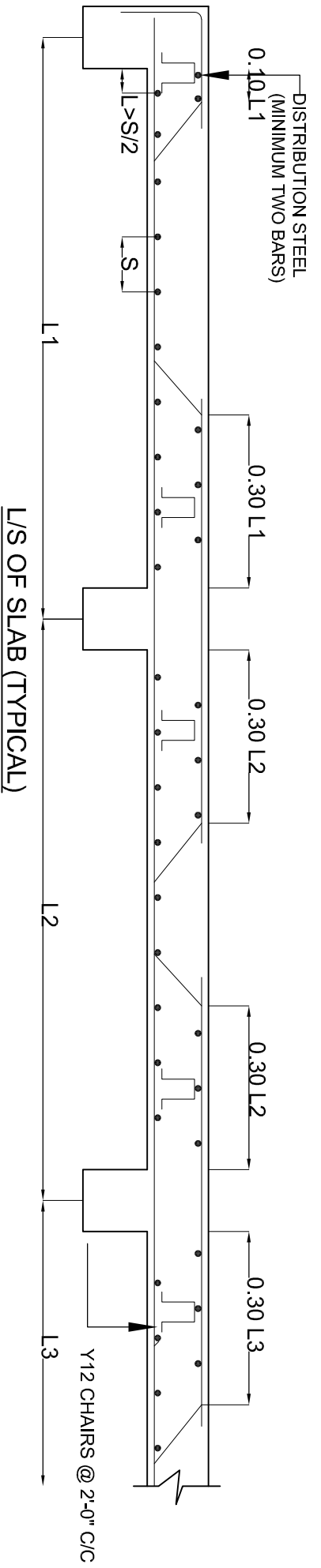
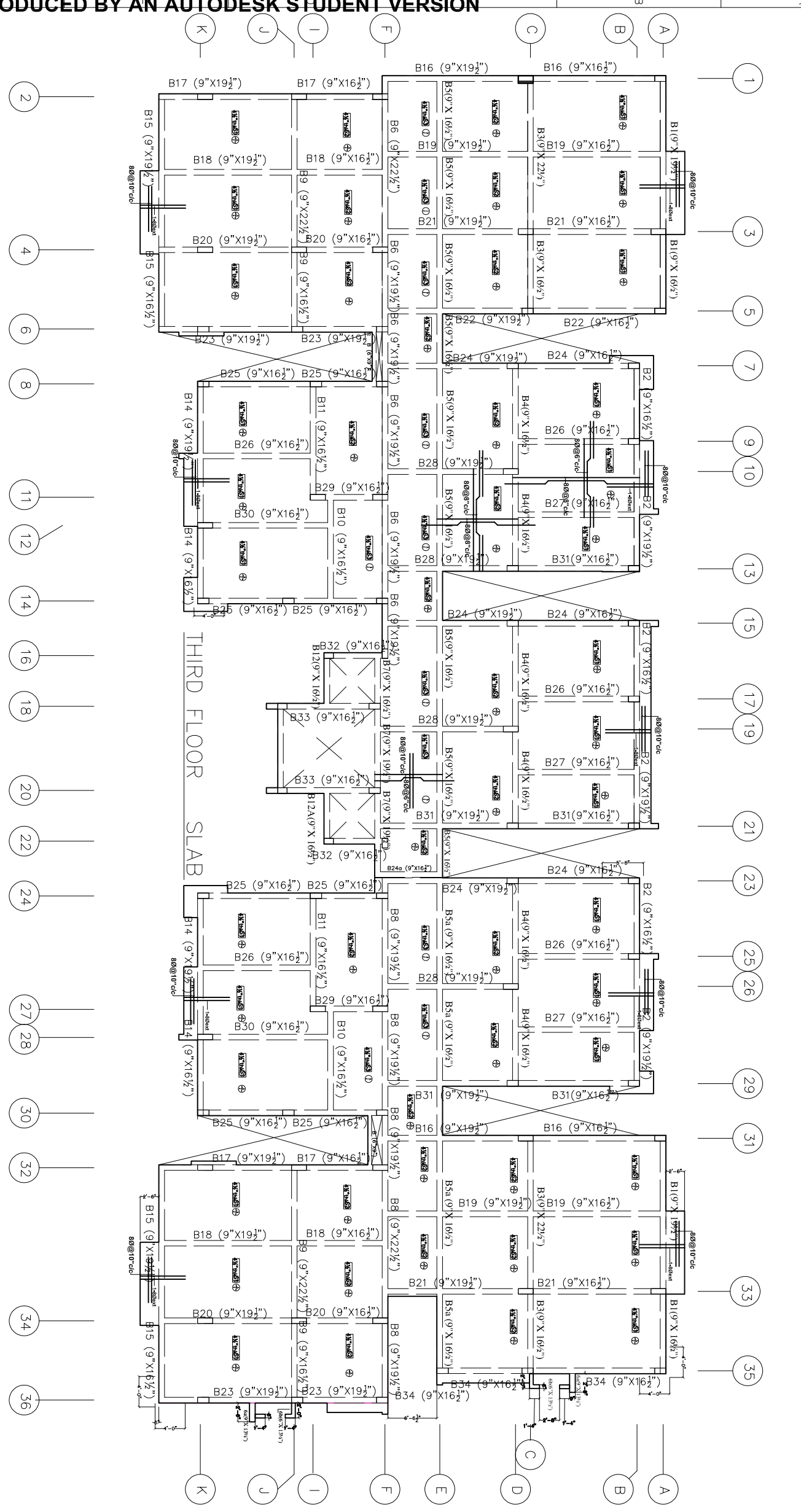


NOTE:
 * ALL SLABS ARE 4 1/2" THK UNLESS AND UNTILL SPECIFIED
 * BEAM DEPTHS ARE INCLUDING SLAB THICKNESS
 * REFER ARCH. DRAWING FOR SLAB PROJECTION DIMENSIONS



- GENERAL NOTES**
- USE M25 (1:1:2) GRADE CONCRETE FOR COLUMNS & M20 (1:1.5:3) FOR BEAMS & SLAB
 - USE F500 GRADE TOR STEEL.
 - PROVIDE CLEAR COVER OF 1.5" FOR COLUMNS, 1" FOR BEAMS & 3/4" FOR SLAB
 - PROVIDE 1" CAMBER AT FREE END FOR CANTILEVER BEAMS & SLABS.
 - IN SLAB EXTEND -VE STEEL UPTO 0.30L FROM FACE OF SUPPORT.
 - DO NOT PROVIDE EXTRA REINFORCEMENT AT SIMPLY SUPPORTS.
 - LAP LENGTH 48 D (D-IS THE DIA OF THE BAR) IN COMPRESSION.
 - LAP LENGTH 52 D (D-IS THE DIA OF THE BAR) IN TENSION.
 - ONLY FIGURED DIMENSIONS SHALL BE FOLLOWED.
 - ALL THE DIMENSIONS ARE IN INCHES & FEET.
 - DO NOT SCALE THE DRAWING.
 - REFER ARCHITECT DRAWING FOR CENTER LINE DIMENSIONS.

REV. NO.	DESCRIPTION	DATE
1		



GOOD FOR REFERENCE

KULKARNI CONSULTANTS
 STRUCTURAL ENGINEERS, ARCHITECTS & PROJECT CONSULTANTS
 #216, KUBERN TOWERS, WAKHARI COLONY, MUMBAI.
 CONTACT NO. 9822323232, 9822323232, 9822323232

Engineers:
 S-4-187 / 384, Soham mandan, 11 Floor,
 M.G. Road, Sector-30/02,
 Phase-2, Sakinaka, Mumbai-400072.
 Phone: 9822323232, 9822323232
 E-mail: info@mkcconsultants.com

SCALE:	N.T.S.	VISTA HOMES BLOCK - (E)
DATE:	02-05-2019	
DRAWN:	SNANISH	TITLE: THIRD FLOOR SLAB
DESIGNED:	SNANISH	
CHECKED:		
APPROVED:	KULKARNI	DWG. NO. KC/WH/SD/E/
		REV. NO. 0