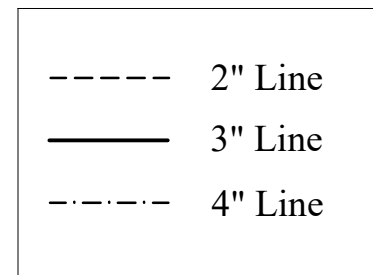
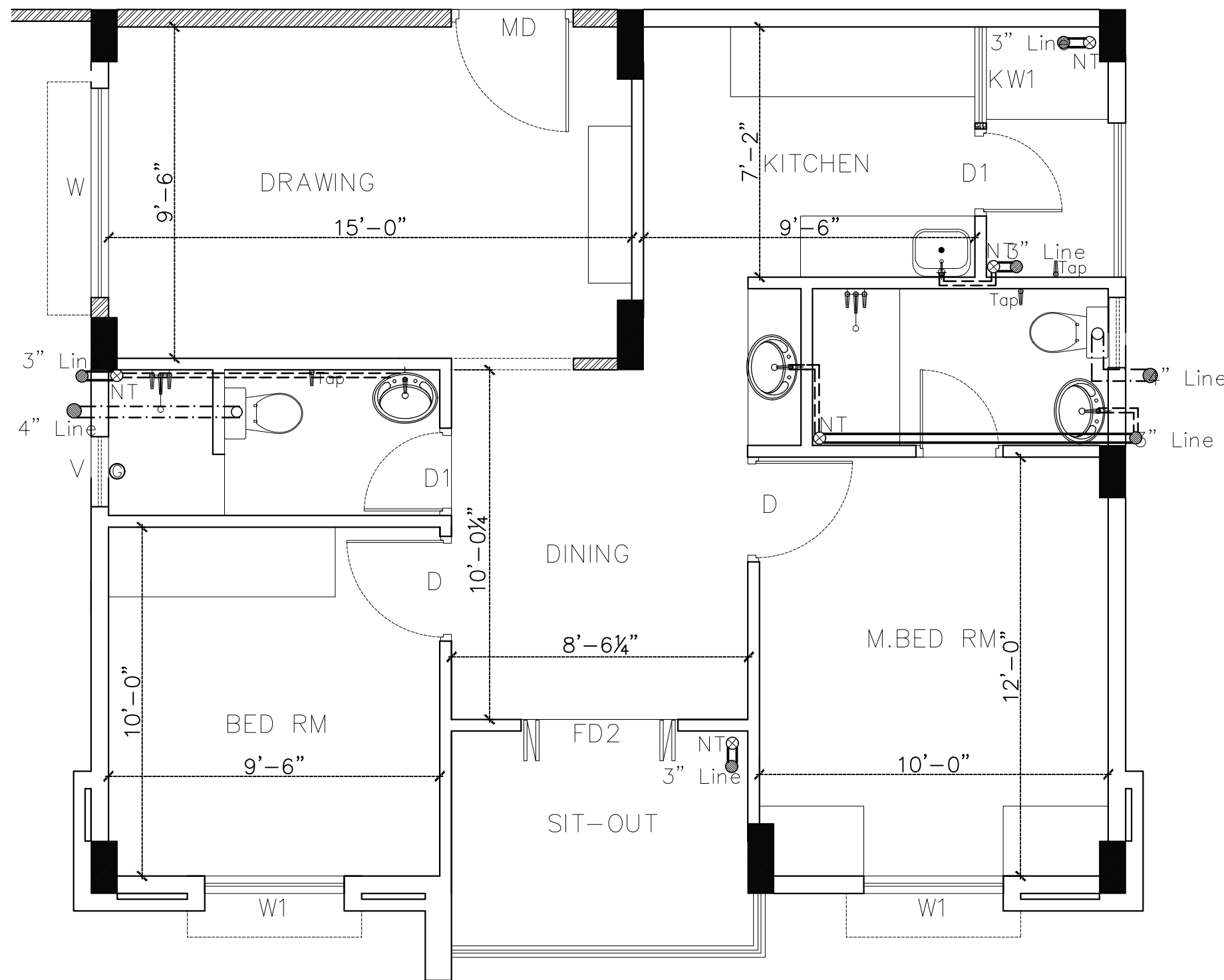


NOTES:

1. Provide tile drop at shower of 3/4".
2. Raise W M/C platform by 2".
3. Provide tile drop of 3/4" at pot wash.
4. Use 2" pvc pipe for waste pipes of sinks / basins with bottle trap.
5. Use wall mounted wc's and half pedestal wash basins.
6. Follow circular.No.506(1) dated.19.08.11 for specs.
7. Do not use Nani trap for kitchen and dining.



Description	Direction	Owners & Developers :	Date :	03.07.14	Promoted by
BATHROOM DETAILS OF TYPE - D		Modi Properties & Investment Pvt Ltd.	Prepared By :	Nagalaxmi	Modi Properties & Investments Pvt. Ltd.
		Project Name & Phase :	Approved By :	Soham Modi	
		Vista Homes	Scale :	N.T.S	Phone:+91-40-66335551