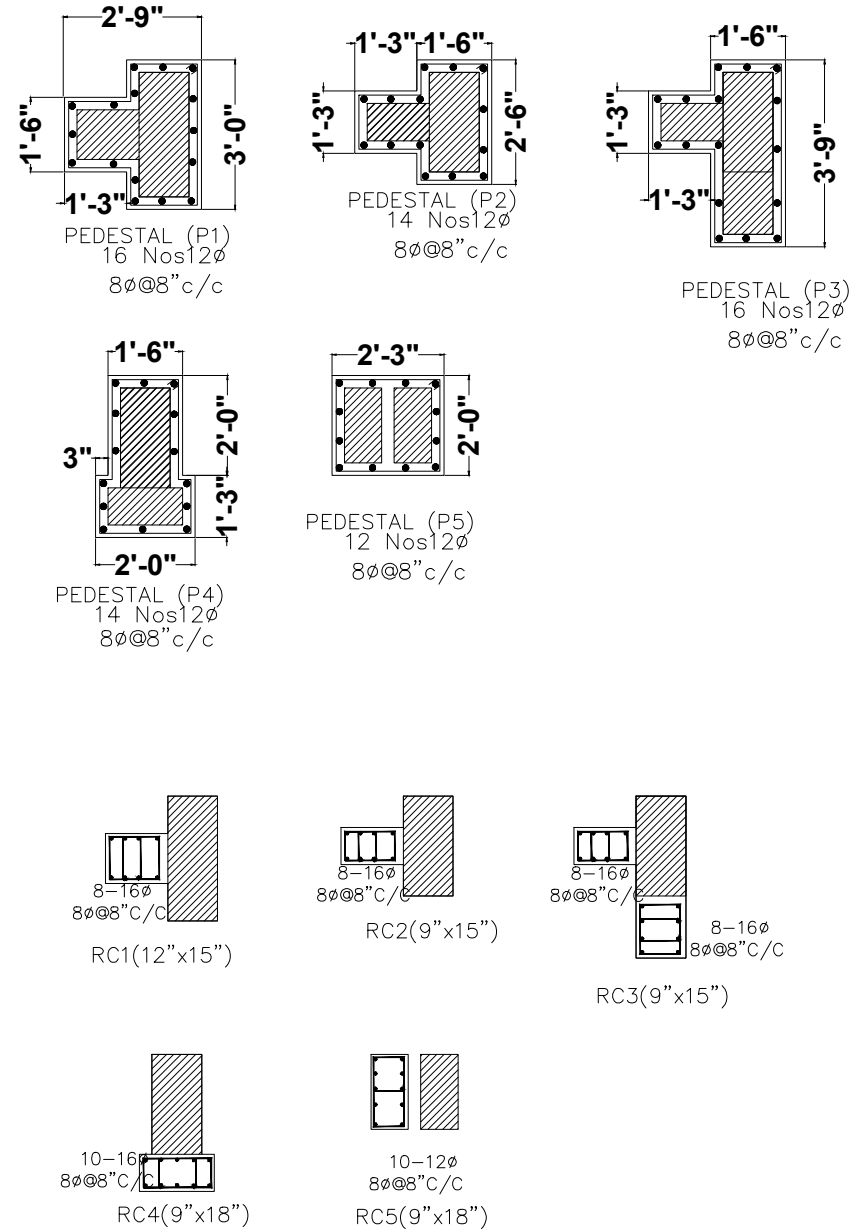


PRODUCED BY AN AUTODESK STUDENT VERSION

PRODUCED BY AN AUTODESK STUDENT VERSION

COLUMN CURTAILMENT & REDUCTION DETAILS													
CELLAR FLOOR					GROUND FLOOR & FIRST FLOOR			SECOND FLOOR & THIRD FLOOR			FOURTH FLOOR		
TYPE/ NOs	SIZE	STEEL	SECTION	LATERAL TIES	SIZE	STEEL	SECTION	SIZE	STEEL	SECTION	SIZE	STEEL	SECTION
C1	9"x18"	8-16φ 2-12φ			9"x18"	8-16φ 2-12φ		9"x18"	8-16φ		9"x18"	6-16φ	
C2	9"x18"	6-20φ 4-16φ			9"x18"	6-20φ 4-16φ		9"x18"	4-20φ 4-16φ		9"x18"	8-16φ	
C3	9"x21"	6-20φ 6-16φ			9"x21"	6-20φ 6-16φ		9"x21"	6-20φ 4-16φ		9"x18"	6-16φ	
C4	9"x24"	10-16φ			9"x24"	10-16φ		9"x21"	8-16φ		9"x21"	6-16φ	
C5	9"x24"	6-20φ 8-16φ			9"x24"	6-20φ 8-16φ		9"x21"	4-20φ 6-16φ		9"x21"	8-16φ	
C6	12"x24"	6-20φ 4-16φ			9"x24"	6-20φ 4-16φ		9"x24"	4-20φ 6-16φ		9"x21"	4-20φ 2-16φ	
C7	12"x24"	6-20φ 8-16φ			9"x24"	6-20φ 8-16φ		9"x24"	4-20φ 6-16φ		9"x21"	4-20φ 2-16φ	
C8	12"x24"	8-20φ 8-16φ			9"x24"	8-20φ 6-16φ		9"x24"	6-20φ 6-16φ		9"x21"	4-20φ 4-16φ	
C9	12"x30"	8-25φ 6-20φ			9"x30"	8-25φ 6-20φ		9"x27"	6-20φ 6-16φ		9"x24"	4-20φ 4-16φ	
C10	15"x30"	12-25φ 6-20φ			12"x30"	10-25φ 4-20φ		9"x30"	8-25φ 4-20φ		9"x27"	8-20φ	
CB	9"x 18"	6-16φ 4-12φ											
RC	9"x 12"	4-16φ 4-12φ											



- NOTE:
- Do not scale this drawing follow figured dimensions
 - All dimensions are in feet n inches only
 - Use vibrated reinforced concrete of mix M20 for footings, & M25 for columns and pedestal conforming to is 456-2000
 - Use hysd bars of fe -500 as per is 1786-85
 - Lap lengths recommended for reinforcement
 - This building is designed for Cellar, Ground + Four floors only.
 - S.B.C. of soil is 300 Kn/sqm
 - Any loose or protruding builders shall be removed before laying foundation concrete and shall be filled with p.c.c.
 - Wherever necessary drilling shall be resorted to in hard sheet rock only
 - Concrete shall be vibrated for obtaining optimum density.
 - The difference in levels of depth of adjacent footing shall not be greater than half the clear distance between them.
 - Provide clear cover for footings 2", columns 1½".
The cover shall be provided to all reinforcements including ties and stirrups wired cover blocks of same grade of concrete and duly cured.
 - Stirrups should have standard hook as per sp-34.
 - Correlate with the relevant drawings for necessary details.
 - Any drawing should be read in conjunction with relevant architectural drawing.
 - All dimensions shall be verified by the engineer in charge before laying concrete with respect to Architectural dwg.
 - The provisions made in is; 456-2000 and sp-34 and other relevant codes should be strictly adhered to during execution.
 - If any variation in soil strata found during the execution of the foundation soils, when compared with the considered strata it should brought to the notice of engineer in charge and consultants for revising foundations.

Client	MODI PROPERTIES & INVESTMENTS PVT.LTD
Project	VISTA HOMES (E (2)- BLOCK)
STRUCTURAL CONSULTANT	KULKARNI CONSULTANT'S STRUCTURAL ENGINEERS, ARCHITECTS & PROJECT CONSULTANT'S #216, KUBERA TOWERS, SARAYAN GUDA, HYDRABAD. CONTACT NO'S:- 04023223891, 09246343724, 09246343720.
DATE	25-05-2019
DEALT BY	SANISH
DESIGN BY	SANTOSH
CHECKED BY	
APPROVED	KULKARNI
TITLE:	COLUMN FOOTING LAYOUT
DWG. NO.	KC/MBC/SD/
REV. No.	2