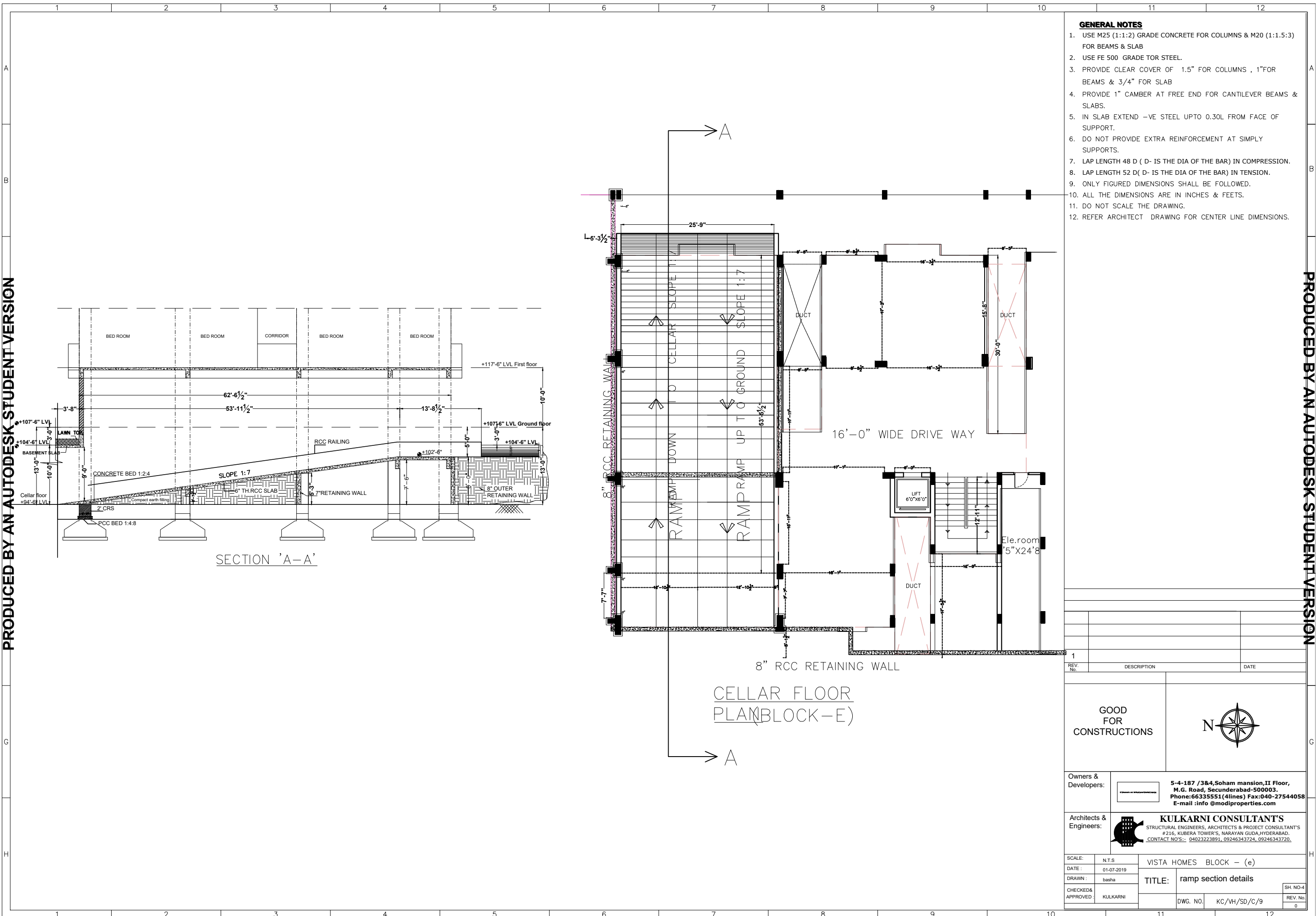


PRODUCED BY AN AUTODESK STUDENT VERSION


PRODUCED BY AN AUTODESK STUDENT VERSION


GENERAL NOTES

1. USE M25 (1:1.5:3) GRADE CONCRETE FOR COLUMNS & M20 (1:1.5:3) FOR BEAMS & SLAB
2. USE FE 500 GRADE TOR STEEL.
3. PROVIDE CLEAR COVER OF 1.5" FOR COLUMNS, 1" FOR BEAMS & 3/4" FOR SLAB
4. PROVIDE 1" CAMBER AT FREE END FOR CANTILEVER BEAMS & SLABS.
5. IN SLAB EXTEND -VE STEEL UPTO 0.30L FROM FACE OF SUPPORT.
6. DO NOT PROVIDE EXTRA REINFORCEMENT AT SIMPLY SUPPORTS.
7. LAP LENGTH 48 D (D- IS THE DIA OF THE BAR) IN COMPRESSION.
8. LAP LENGTH 52 D (D- IS THE DIA OF THE BAR) IN TENSION.
9. ONLY FIGURED DIMENSIONS SHALL BE FOLLOWED.
10. ALL THE DIMENSIONS ARE IN INCHES & FEET.
11. DO NOT SCALE THE DRAWING.
12. REFER ARCHITECT DRAWING FOR CENTER LINE DIMENSIONS.



REV. No.	DESCRIPTION	DATE
1		

GOOD FOR CONSTRUCTIONS	
------------------------	---

Owners & Developers: 5-4-187 /3&4, Soham mansion, II Floor, M.G. Road, Secunderabad-500003. Phone:66335551(4lines) Fax:040-27544058 E-mail :info @modiproperties.com	Architects & Engineers:  KULKARNI CONSULTANT'S STRUCTURAL ENGINEERS, ARCHITECTS & PROJECT CONSULTANT'S #216, KUBERA TOWER'S, NARAYAN GUDA, HYDERABAD. CONTACT NO'S:- 04023223891, 09246343724, 09246343720.
---	---

SCALE: N.T.S	VISTA HOMES BLOCK - (e)
DATE: 01-07-2019	TITLE: ramp section details
DRAWN: basha	DWG. NO. KC/VH/SD/C/9
CHECKED & APPROVED: KULKARNI	SH. NO-4