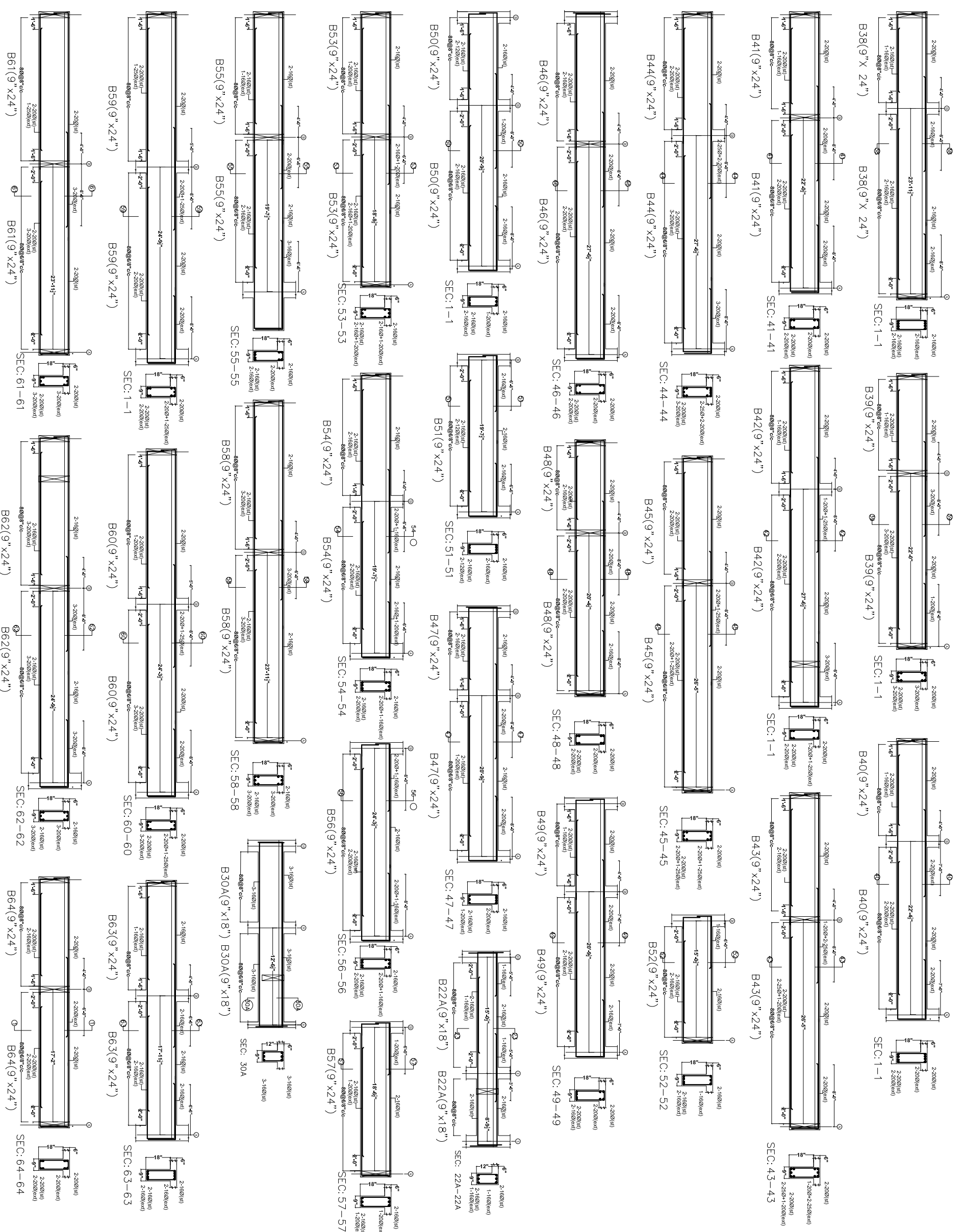



- GENERAL NOTES**
1. USE M25 (1:1.5:2) GRADE CONCRETE FOR COLUMNS & M20 (1:1.5:3) FOR BEAMS & SLAB
 2. USE FE415 GRADE TOR STEEL
 3. PROVIDE CLEAR COVER OF 1.5" FOR COLUMNS, 1" FOR BEAMS & 3/4" FOR SLAB
 4. PROVIDE 1" CAMBER AT FREE END FOR CANTILEVER BEAMS & SLABS.
 5. IN SLAB EXTEND -VE STEEL UPTO 0.30L FROM FACE OF SUPPORT.
 6. DO NOT PROVIDE EXTRA REINFORCEMENT AT SIMPLY SUPPORTS.
 7. LAP LENGTH 48 D (D- IS THE DIA OF THE BAR) IN COMPRESSION.
 8. LAP LENGTH 52 D (D- IS THE DIA OF THE BAR) IN TENSION.
 9. ONLY FIGURED DIMENSIONS SHALL BE FOLLOWED.
 10. ALL THE DIMENSIONS ARE IN INCHES & FEET.
 11. DO NOT SCALE THE DRAWING.
 12. REFER ARCHITECT DRAWING FOR CENTER LINE DIMENSIONS.



Owners & Developers: 5-4-187 / 384 Ssham mansion, II Floor, M.G. Road, Secunderabad-500003, Phone: 02525551 (Times) Fax: 0252-27544058 E-mail: info@emodhproperties.com	
Architects & Engineers:  KULKARNI CONSULTANTS STRUCTURAL ENGINEERS, ARCHITECTS & PROJECT CONSULTANTS CONTACT NO:SE: 0402323291, 02549343724, 02549343723	
SCALE: N.T.S. DATE: 16-11-16 DRAWN: PAVAN CHECKED: KULKARNI APPROVED:	VISTA HOMES BLOCK - (G) TITLE: CELLAR BEAM DETAILS DWG. NO. KC/HH/5D/G/7 SH NO-1 REV. NO. 0