

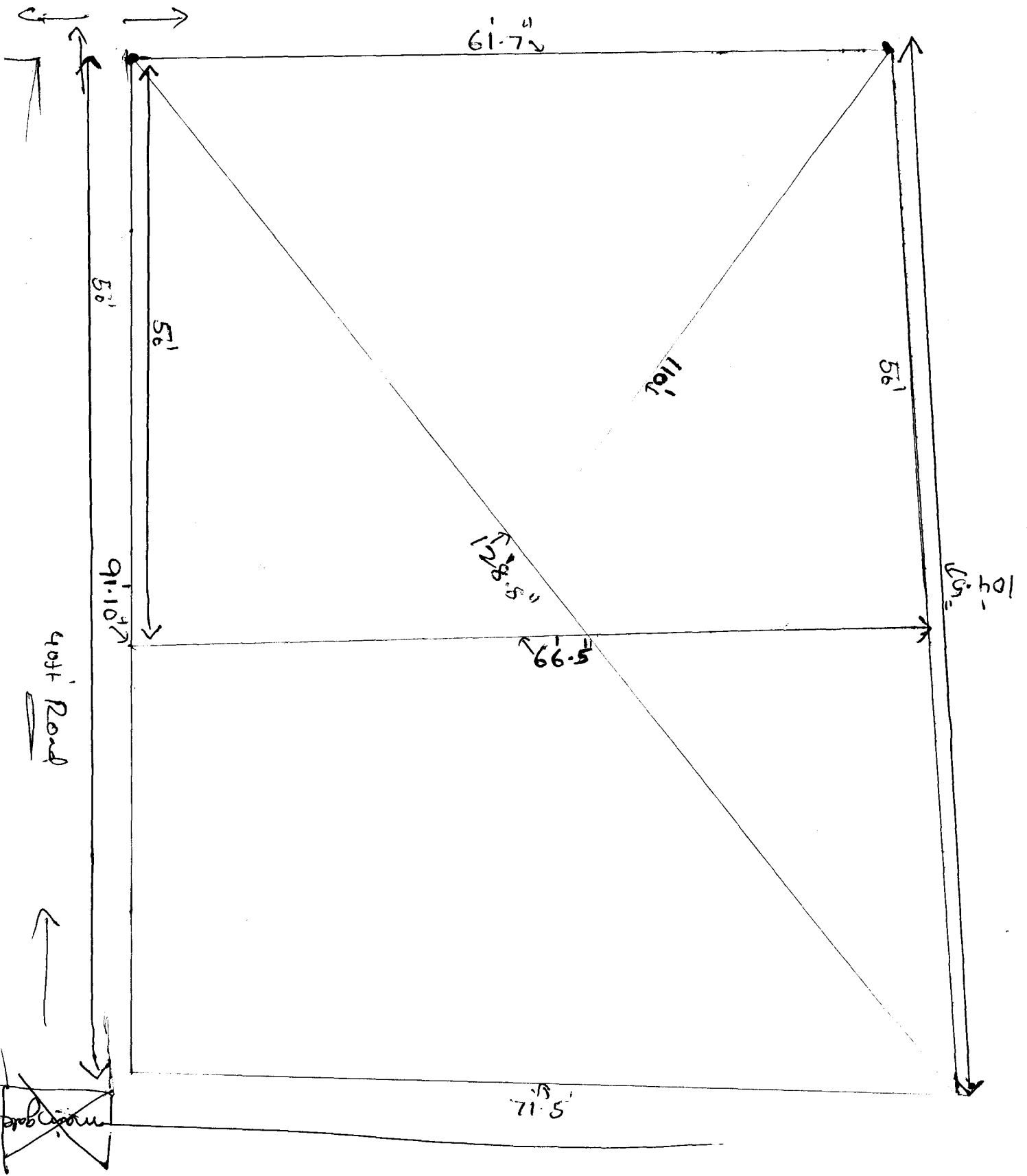
Modi 4 Modi Cont


Area Calculation by triangular method.
 Rampally Sy No. 134, 136p, 136p
 Suyvey done Checked by Soham on 24.8.05

S No	a	b	c	s	s-a	s-b	s-c	Product	Root	In sq tds
1.00	104.50	61.58	128.66	147.37	42.87	85.79	18.71	10,140,818.79	3,184.47	353.83
2.00	71.42	91.83	128.66	145.96	74.54	54.13	17.30	10,183,515.03	3,191.16	354.57
3.00	-	-	-	-	-	-	-	-	-	-
4.00	-	-	-	-	-	-	-	-	-	-
										708.40

S No	a	b	c	s	s-a	s-b	s-c	Product	Root	In sq tds
1.00	104.50	71.42	110.00	142.96	38.46	71.54	32.96	12,964,624.97	3,600.64	400.07
2.00	61.58	91.83	110.00	131.71	70.13	39.88	21.71	7,993,475.04	2,827.27	314.14
3.00	-	-	-	-	-	-	-	-	-	-
4.00	-	-	-	-	-	-	-	-	-	-
5.00	-	-	-	-	-	-	-	-	-	-
										714.21

1.00	0.08
2.00	0.17
3.00	0.25
4.00	0.33
5.00	0.42
6.00	0.50
7.00	0.58
8.00	0.67
9.00	0.75
10.00	0.83
11.00	0.92
12.00	1.00



Plot nos 
 not to  be

hol
 198 - 60
 501 - 90
 561 - 50

