

COLUMN SECTION DETAILS				FOOTING DETAILS						
TYPE	MIX	COLUMN SIZE	SECTION	REINFORCEMENT	SNO	FOOT SIZE	A	B	D1	REINFORCEMENT
C1	M25	230x600	[Diagram]	#10nos-20Ø 8Ø@200 c/c 2-ties	1	F 1	2400	2400	750	16Ø@150c/c bothways
C2	M25	230x450	[Diagram]	#8nos-20Ø +4-16Ø 8Ø@200 c/c 2-ties	2	F 2	2000	2000	600	12Ø@150c/c bothways
C3	M25	230x450	[Diagram]	#8nos-20Ø +4-16Ø 8Ø@200 c/c 2-ties	3	F 3	1800	1800	525	12Ø@150c/c bothways
					4	CF	3160	3380	750	16Ø@150c/c bothways top & bottom

GENERAL NOTE

- USE M25 GRADE OF CONCRETE FOR COLUMNS, FOOTINGS, BEAMS & SLABS. (RATIO AS PER DESIGN MIX).
- USE FE 500 GRADE TOR STEEL.
- FOOTING IS DESIGN FOR STILL & UPPER FOUR FLOOR.
- B.B.C OF the wall is taken as per soil report 300 kn/m² /sqm
- USE FE 500 GRADE TOR STEEL.
- PROVIDE CLEAR COVER TO STEEL 40mm FOR COLUMNS, 50mm FOR FOOTINGS, 25mm FOR BEAMS AND 20mm FOR SLABS.
- PROVIDE 25MM CAMBER AT FREE END FOR CANTILEVER BEAMS & SLABS.
- IN SLAB EXTEND -VE STEEL UP TO 30L FROM FACE OF SUPPORT.
- DO NOT PROVIDE EXTRA REINFORCEMENT AT SIMPLE SUPPORTS.
- LAP LENGTH 48 D (D - IS THE DIA OF THE BAR) IN COMPRESSION.
- LAP LENGTH 52 D (D - IS THE DIA OF THE BAR) IN TENSION.
- DESIGNED FOR ZONE-II EARTHQUAKE LOADS AS PER IS 1893 -2002 & WIND LOADS AS PER IS 875 PART-3.
- ALL THE DIMENSIONS ARE IN MILLIMETRES.

PLAN SHOWING THE PROPOSED GATED COMMUNITY LAYOUT CUM GROUP HOUSING IN SY. NOS 11, 12, 14 TO 18 & 284 (PART) SITUATED AT CHERLAPALLY VILLAGE, GHMC KAPRA CIRCLE, GHATKESAR MANDAL, R.R DISTRICT.

BELONGING TO:
M/S SILVER OAK REALTY (FORMERLY KNOWN AS M/S. MEHTA & MODI HOMES) REPRESENTED BY ITS MANAGING PARTNER
SRI. SOHAM MODI, S/O SRI. SATISH MODI

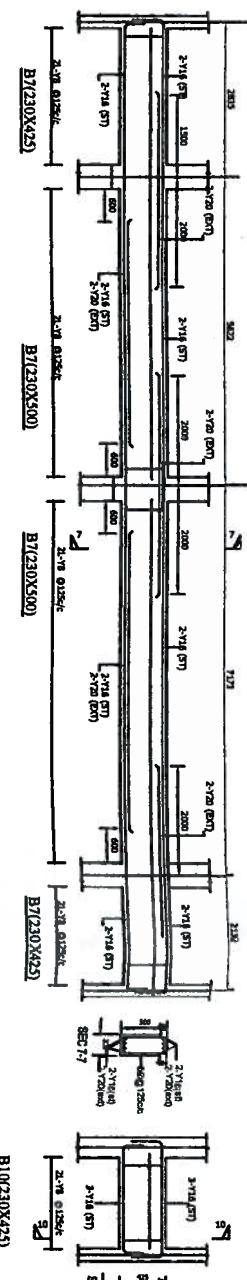
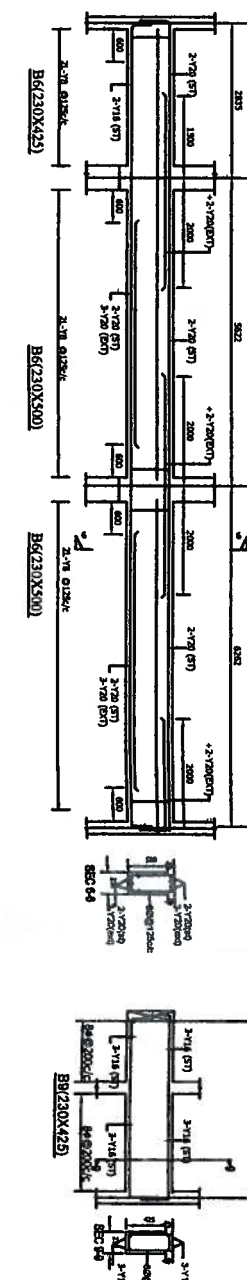
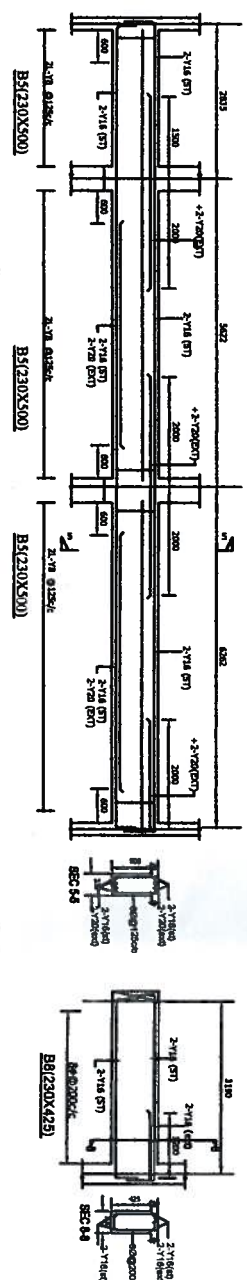
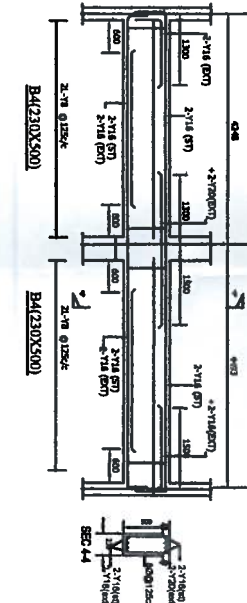
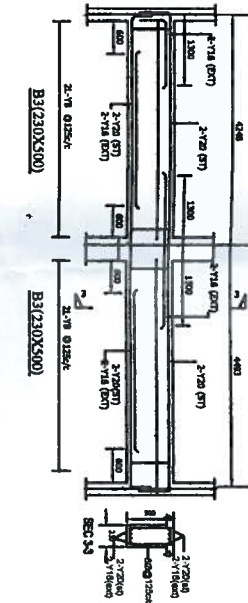
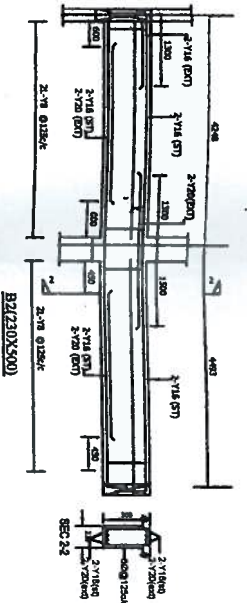
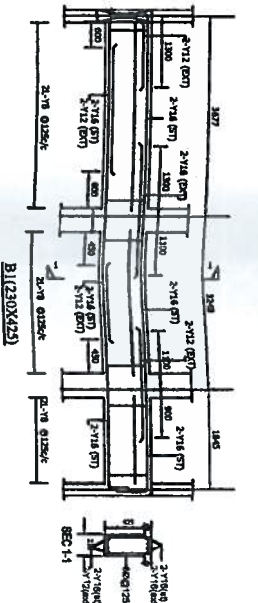
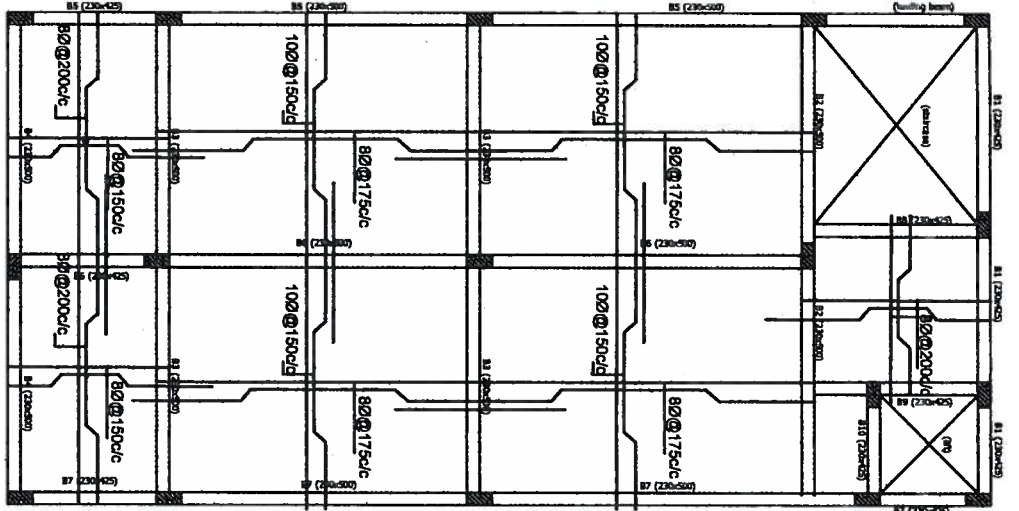
AMENITIES BLOCK

COLUMN & FOOTING SECTION DETAILS

Structural Engineer's Signature: *M. Dattatri R*

M. Dattatri R
STRUCTURAL ENGINEER
GHMC License No.: 134

SHEET NO. : 1



- GENERAL NOTE**
1. USE M25 GRADE OF CONCRETE FOR COLUMNS, FOOTINGS,
 2. BEAMS & SLABS. (RATTO AS PER DESIGN MIX).
 3. USE FE 500 GRADE TOR STEEL.
 4. FOOTING IS DESIGN FOR STILT & UPPER FOUR FLOOR.
 5. S.B.C OF the soil is taken as per soil report 300 knt/m²sq
 6. USE FE 500 GRADE TOR STEEL.
 7. PROVIDE CLEAR COVER TO STEEL, 40mm FOR COLUMNS, 50mm FOR FOOTINGS, 25mm BEAMS AND 20mm FOR SLABS.
 8. PROVIDE 25MM CAMBER AT FREE END FOR CANTILEVER BEAMS & SLABS.
 9. IN SLAB EXTEND -VE STEEL UPTO 0.30L FROM FACE OF SUPPORT.
 10. DO NOT PROVIDE EXTRA REINFORCEMENT AT SIMPLE SUPPORTS.
 11. LAP LENGTH 48 D (D - IS THE DIA OF THE BAR) IN COMPRESSION.
 12. LAP LENGTH 52 D (D - IS THE DIA OF THE BAR) IN TENSION.
 13. DESIGNED FOR ZONE-II EARTHQUAKE LOADS AS PER IS 1893 -2002 & WIND LOADS AS PER IS 875 PART-3.
 14. ALL THE DIMENSIONS ARE IN MILLIMETRES.

PLAN SHOWING THE PROPOSED GATED COMMUNITY LAYOUT CUM GROUP HOUSING IN SY. NOS 11, 12, 14 TO 18 & 294 (PART) SITUATED AT CHERLAPALLY VILLAGE, GHMC KAPRA CIRCLE, GHATKESAR MANDAL, R.R DISTRICT.

BELONGING TO:
 M/S SILVER OAK REALTY (FORMERLY KNOWN AS M/S. MEHTA & MODI HOMES) REPRESENTED BY ITS MANAGING PARTNER

SRI. SOHAM MODI, S/O SRI. SATISH MODI

AMENITIES BLOCK

TYPICAL SLAB & BEAM SECTION DETAILS

NORTH

Structural Engineer's Signature :

M. Datatri Rao

M. DATATRI RAO
 STRUCTURAL ENGINEER
 GHMC. Ls. No.: 134

GHMC License No. 134

SHEET NO. : 1