

Col - First floor - 639 kgr.

✓ Col - 9 floor - 660 kgr.

✓ Plink / 80mm. - 216 kgr. | 358/?

I floor - 629 kgr.

footing

✓ 4 floor

✓ 4 floor

I " slabs - 437 kgr

$$4. \quad 216 + 358 + 266 =$$

$$\text{Col 1 + slabs 1 + beam 1} = 660 + 629 + 442$$

$$\text{Col 2 + slabs 2 + beam 2} = 639 + ~~629~~ + 437$$

$$F - 840$$

$$1 - 1731$$

$$2 - 1750$$

$$\underline{\underline{4321}} \text{ kgr.}$$

From Newton software - Feb '10

KNM

Abstract steel estimate of KNM (Type-A) bungalow

S.No.	Item	Item Description	8mm	10mm	12mm	16mm	20mm	Units
1	Footings							Kgs
		For mat	-	217	-	-	-	Kgs
		For column upto plinth level	58	-	78	222	-	Kgs
		For pedestal	53	-	321	-	-	Kgs
2	Plinth beam		329	-	812	-	-	Kgs
3	Columns-I		126	-	143	390	-	Kgs
4	Beams-I		197	-	194	237	-	Kgs
5	Slab-I		442	-	-	-	-	Kgs
6	Columns-II		126	-	137	375	-	Kgs
7	Beams-II		197	-	160	318	-	Kgs
8	Slab-II		437	-	-	-	-	Kgs
	Total		1965	217	1845	1542	-	Kgs.

Note: Steel for pedestal was not mentioned by newton people, it was estimated by me

$$\begin{aligned} & \text{Total } 5569 \text{ kgs.} \\ & \div 1620 = \underline{\underline{3.5 \text{ kgs / sqft}}} \end{aligned}$$

## KNM - estimate by Newton Software - Feb '10

S.No.	Item	Item Description	Quantity	Units	Remarks
1	Excavation	Column pits	2753	cft	
2	PCC	PCC below Footing	198	cft	
		PCC at plinth level	271	cft	
3	Concrete	For footings	517.5	cft	
		For pedestals	37.23	cft	
		For plinth beams	94	cft	
		For columns-I	100	cft	
		For beams-I	160	cft	
		For slab-I	238	cft	
		For columns-II	85	cft	
		For beams-II	185	cft	
		For slab-II	199	cft	
		For lintels	17	cft	
		Staircase	10.36	cft	
4	Shuttering area	For footings	456	sft	
		For pedestals	35	cft	
		For plinth beams	316	sft	
		For columns-I	509	sft	
		For beams-I	592	sft	
		For slab-I	634	sft	
		For columns-II	458	sft	
		For beams-II	647	sft	
		For slab-II	?	sft	not specified
5	Brick Masonary	Ground floor	1289	sft	
		First floor	620	sft	
				sft	
6	Plastering	Ceiling	645	sft	First floor not specified
		external plastering	1917	sft	
		Internal plastering	3236	sft	
		staircase	156	sft	
7	Painting	Ceiling	645	sft	First floor not specified
		external paint	1917	sft	
		Internal paint	3236	sft	
		staircase	156	sft	
8	Flooring		1181	sft	
9	Skirting		317	rft	
10	Water proofing	Toilets	230	sft	
		Open terrace	94	sft	
11	Bathroom tiles	Walls	544	sft	

1450  
J.M.

1650

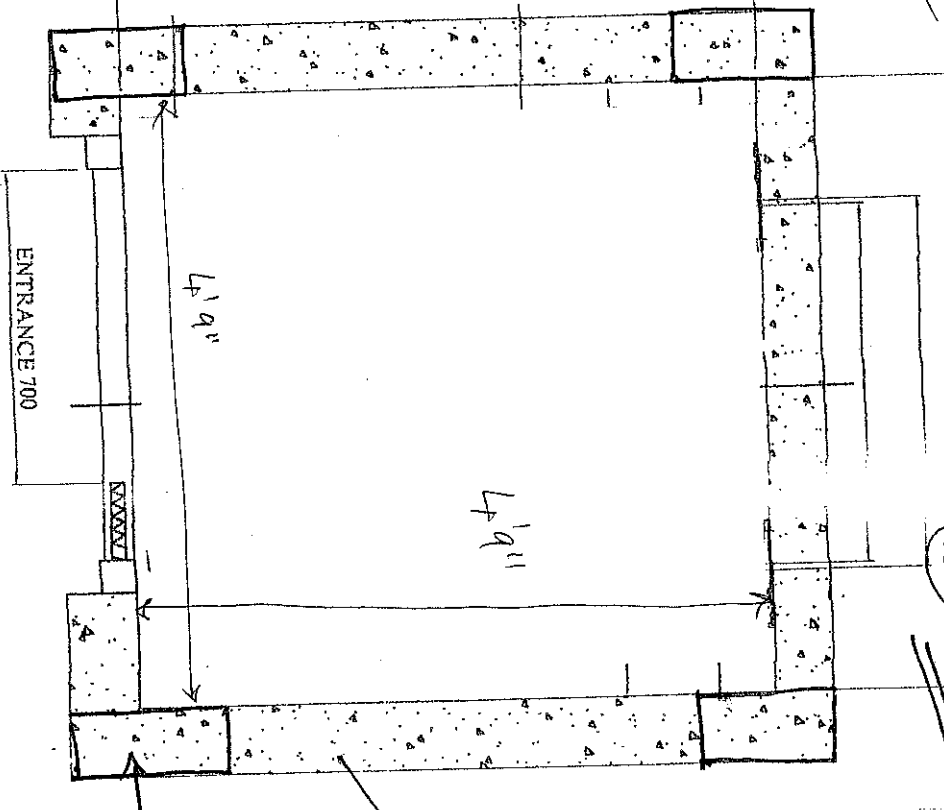
**ESTIMATE SHEET of steel for type A bungalow**

Company Name: Bloomdale  
Project: kadakia & Modi Housing  
ESTIMATE  
PREPARED BY: KHIZER  
Date: 18.11.09

S No.	Item Head	Item Description	Quantity	Units	Item Head Total
1	FOR CHAJJAS & LINTELS	6MM	100.00	KGS	
2	STIRUPS & SLAB	8MM	2500.00	KGS	
3	FOOTINGS MAT, STAIRCASE & CHAJJAS	10MM	450.00	KGS	
4	COLUMNS & BEAMS	12MM	1,350.00	KGS	
5	COLUMNS & BEAMS	16MM	1,620.00	KGS	
			6,020.00		6,020.00 KGS

File no. #21

SHAFT INSIDE DEPTH 1370



HOME LIFT  
 CAR AREA : 0.77m<sup>2</sup>  
 CAP: 300 Kg  
 SPEED : 0.32m/s  
 PIT : 350mm  
 OH: 2850 mm  
 CAR RAIL SIZE: 75x62x10 THK.  
 C/W T RAIL SIZE: 50 x 50 x 6 THK.  
 DOOR: COLLAPSIBLE

IMPORTANT NOTE: THIS DESIGN IS BASED ON THE INFORMATION FURNISHED BY THE CLIENT. IT IS THE RESPONSIBILITY OF THE CLIENT TO CHECK AND VERIFY THE DESIGN BEFORE IMPLEMENTATION. BHEL WILL NOT BE RESPONSIBLE IN ANY MANNER FOR PRODUCT LIABILITY ARISING OUT OF MALFUNCTIONING OF FINAL PRODUCT, I.e. LIFT.

1/4" Wall / 1/4" Ribs  
 Hardy particles Sprayed  
 Mergent (Honey Comb) Skat Drains  
 for care work

Wall thickness 285mm or 9" can reduce to 6"

6" x 12" x 18" column.

Lift for Bangalore no 21 cum

APPROVED FOR CONSTRUCTION  
 29 APR 2010

DRN: KAW	TITLE
CHD: AS	SCHEMATIC DRAWING OF PLACEMENT OF THE GEARS, MOTOR IN THE ELEVATOR MANUFACTURED, ERECTED AND INSTALLED BY M/S. JAYSUNG ELEVATORS - SECUNDERABAD
DATE: 10/04/2010	
DWG. NO. 4ES-05-0108	
	NO. OF SHEET 1/1

APPROVED FOR CONSTRUCTION

Left Dr Bungalow no 21 KVM

beam about 18" in left pit.

Bungalow FFL.

TOTAL LANDING 3  
TOTAL III OPENING

floor deleted.

APPROVED FOR CONSTRUCTION  
29 APR 2010

no opening required

H

Pit 350mm

GROUND FLOOR

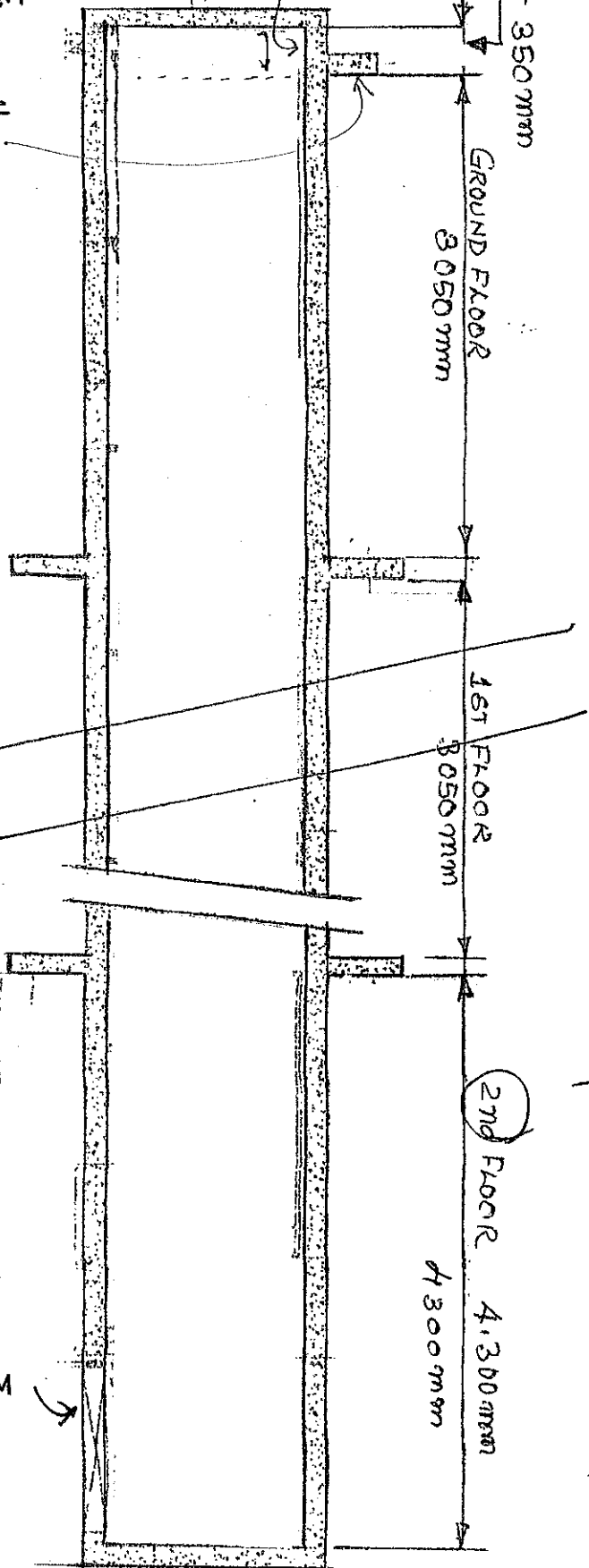
8050mm

1ST FLOOR

8050mm

2ND FLOOR

4300mm



OWNER	MR. JAYSHREE
CHIEF ARCHT.	M/S. JAYSHREE
DATE	29 APR 2010
PROJECT	REPAIR WORKS & ALTERATION OF THE BANGALOW IN THE BANGALOW PHASE II, AREA 1, BANGALOW NO. 21, KVM
DESIGNER	M/S. JAYSHREE

418-05-0109

NO. OF SHEETS 22

KVM file

NEW PROPERTIES - INFO SHEET

Date	5-12-09
Info. Sheet prepared by	G. Srinivas Reddy
Area (sq. yds. / acres)	5 1/2 Acres
Location	Shamirpet, Upperpally (V)
Distance from nearest main road	200 meters
Distance from nearest prominent location	2 km from Shamirpet, Highway
Surrounding Area	Open undeveloped land / Agricultural land / Flats / Independent houses / Plots / Industries / Other
Approach road	Paved / Un paved - Road width 30 ft.
Land use as per HUDA	Residential zone / Commercial zone / Conservation (agri) zone / Recreational zone / Industrial zone / Other
Nature of Title	<input checked="" type="checkbox"/> Patta Land / <input type="checkbox"/> Imam Land / Registered Sale Deed / Agreement Holder / GPA Holder / other
Other Details of Title like year of acquisition, number of owners etc.,	—
Details of litigation if any (past or present)	—
Name, age, contact numbers and occupation of owners	—
Details of ULC	—
For sale rate per acre/sq. yard	50 Lacs / Acre
For development - ratio and deposit	—
Property referred by	<input checked="" type="checkbox"/> Estate Agent / <input type="checkbox"/> Acquaintance / <input type="checkbox"/> Agreement Holder / <input type="checkbox"/> Owner / <input type="checkbox"/> Through Ad / <input type="checkbox"/> Other
Name of Estate Agent, Address & Phone No.	Krishnamurthy 9885001043

KVM

MATERIAL USED AGAINST BOQ

Company Name: Bloomdale  
Project: kadakia & Modi Housing  
Work Description: paint work of BNLBN35 &  
Plot no. BNLBN35, C.COMPLEX  
contractor Hanmantu  
Date: 12.1.10

S No.	Item Head	material received	unit	r
1	lappam	85	bags	
2	primer	110	ltr	
3	obd	166	ltr	
4	wood primer	24	ltr	
5	redoxide	27	ltr	
6	external emulsion	148	ltr	
7	enamel	12	ltr	
8	birta putty for bath rooms	8	bags	

NOTE: Material at site : 0

Material taken out of site : ( with permissi



# HANMANTU DETAILS OF ATTENDANCE

04/01/10



22-05-09	10:05	1276	MADHU	HAN PAI	MA	220	17:30	1 1	On A/c	220
22-05-09	10:35	1272	B HANUMANT	HAN PAI	CO	250	17:30	1 1	On A/c	250
22-05-09	10:35	1275	V VENKATESH	HAN PAI	MA	220	17:30	1 1	On A/c	220
22-05-09	10:35	1273	T SRINU	HAN PAI	MA	220	17:30	1 1	On A/c	220
22-05-09	10:35	1274	P MANIK	HAN PAI	MA	220	17:35	1 1	On A/c	220
23-05-09	9:05	1273	T SRINU	HAN PAI	MA	220	17:30	1 1	On A/c	220
23-05-09	9:05	1276	MADHU	HAN PAI	MA	220	17:30	1 1	On A/c	220
23-05-09	9:05	1275	V VENKATESH	HAN PAI	MA	220	17:30	1 1	On A/c	220
23-05-09	9:05	1274	P MANIK	HAN PAI	MA	220	17:30	1 1	On A/c	220
24-05-09	9:00	1274	P MANIK	HAN PAI	MA	220	17:30	1 35	On A/c	220
24-05-09	9:01	1276	MADHU	HAN PAI	MA	220	17:35	1 35	On A/c	220
24-05-09	9:02	1273	T SRINU	HAN PAI	MA	220	17:30	1 35	On A/c	220
24-05-09	9:02	1278	T HANUMANTH	HAN PAI	MA	220	17:35	1 35	On A/c	220
25-05-09	9:05	1275	V VENKATESH	HAN PAI	MA	220	17:40	1 35	On A/c	220
25-05-09	9:15	1273	T SRINU	HAN PAI	MA	220	17:35	1 35	On A/c	220
25-05-09	9:15	1274	P MANIK	HAN PAI	MA	220	17:35	1 35	On A/c	220
25-05-09	9:16	1278	T HANUMANTH	HAN PAI	MA	220	17:30	1 35	On A/c	220
25-05-09	10:30	1276	MADHU	HAN PAI	MA	220	17:30	1 35	On A/c	220
26-05-09	9:06	1274	P MANIK	HAN PAI	MA	220	17:30	1 35	On A/c	220
26-05-09	9:06	1278	T HANUMANTH	HAN PAI	MA	220	17:30	1 35	On A/c	220
26-05-09	9:07	1275	V VENKATESH	HAN PAI	MA	220	17:30	1 35	On A/c	220
26-05-09	9:07	1276	MADHU	HAN PAI	MA	220	17:30	1 35	On A/c	220
27-05-09	9:07	1276	MADHU	HAN PAI	MA	220	17:30	1 35	On A/c	220
27-05-09	9:07	1273	T SRINU	HAN PAI	MA	220	17:30	1 35	On A/c	220
27-05-09	9:07	1282	BALRAJ	HAN PAI	MA	220	17:30	1 35	On A/c	220
27-05-09	9:08	1275	V VENKATESH	HAN PAI	MA	220	17:30	1 35	On A/c	220
27-05-09	9:13	1278	T HANUMANTH	HAN PAI	MA	220	17:30	1 35	On A/c	220
27-05-09	9:13	1274	P MANIK	HAN PAI	MA	220	17:30	1 35	On A/c	220
28-05-09	9:05	1274	P MANIK	HAN PAI	MA	220	17:35	1 35	On A/c	220
28-05-09	9:05	1273	T SRINU	HAN PAI	MA	220	17:30	1 35	On A/c	220
28-05-09	9:05	1275	V VENKATESH	HAN PAI	MA	220	17:30	1 35	On A/c	220
28-05-09	9:06	1278	T HANUMANTH	HAN PAI	MA	220	17:30	1 35	On A/c	220
28-05-09	10:15	1276	MADHU	HAN PAI	MA	220	17:30	1 35	On A/c	220
28-05-09	10:15	1282	BALRAJ	HAN PAI	MA	220	17:30	1 35	On A/c	220
29-05-09	9:14	1274	P MANIK	HAN PAI	MA	220	22:45	2 CA	On A/c	440
29-05-09	9:15	1275	V VENKATESH	HAN PAI	MA	220	22:45	2 CA	On A/c	440
29-05-09	9:15	1278	T HANUMANTH	HAN PAI	MA	220	22:45	2 35	On A/c	440
29-05-09	9:15	1273	T SRINU	HAN PAI	MA	220	22:45	2 CA	On A/c	440
29-05-09	9:17	1276	MADHU	HAN PAI	MA	220	17:30	1 35	On A/c	220
29-05-09	9:17	1282	BALRAJ	HAN PAI	MA	220	17:30	1 35	On A/c	220
30-05-09	9:05	1273	T SRINU	HAN PAI	MA	220	17:30	1 35	On A/c	220
30-05-09	9:05	1278	T HANUMANTH	HAN PAI	MA	220	17:30	1 35	On A/c	220
30-05-09	9:05	1275	V VENKATESH	HAN PAI	MA	220	17:35	1 35	On A/c	220
30-05-09	9:05	1274	P MANIK	HAN PAI	MA	220	17:30	1 35	On A/c	220
30-05-09	13:50	1276	MADHU	HAN PAI	MA	220	18:30	1 35	On A/c	220
31-05-09	9:05	1275	V VENKATESH	HAN PAI	MA	220	17:30	1 1	On A/c	220
31-05-09	9:05	1278	T HANUMANTH	HAN PAI	MA	220	17:30	1 1	On A/c	220
31-05-09	9:05	1274	P MANIK	HAN PAI	MA	220	17:30	1 1	On A/c	220
31-05-09	9:05	1273	T SRINU	HAN PAI	MA	220	10:05	0 1	On A/c	0
31-05-09	10:00	1276	MADHU	HAN PAI	MA	220	14:05	0.5 1	On A/c	110
31-05-09	10:00	1282	BALRAJ	HAN PAI	MA	220	11:05	0 1	On A/c	0
01-06-09	9:07	1278	T HANUMANTH	HAN PAI	MA	220	17:30	1 1	On A/c	220
01-06-09	9:07	1275	V VENKATESH	HAN PAI	MA	220	17:30	1 1	On A/c	220
01-06-09	9:07	1273	T SRINU	HAN PAI	MA	220	17:30	1 1	On A/c	220
01-06-09	9:08	1274	P MANIK	HAN PAI	MA	220	17:30	1 1	On A/c	220
01-06-09	10:45	1276	MADHU	HAN PAI	MA	220	17:30	1 1	On A/c	220
02-06-09	9:20	1274	P MANIK	HAN PAI	MA	220	17:30	1 1	On A/c	220
02-06-09	9:20	1278	T HANUMANTH	HAN PAI	MA	220	17:30	1 1	On A/c	220

19-06-09	9:25	1274	P MANIK	HAN PAI	MA	220	17:30	1 CA	On A/c	220
19-06-09	9:30	1321	MANIKAPPA	HAN PAI	MH	150	17:30	1 CA	On A/c	150
20-06-09	9:06	1321	MANIKAPPA	HAN PAI	MH	150	17:40	1 CA	On A/c	150
20-06-09	9:06	1283	Narsimha	HAN PAI	MH	150	17:30	1 CA	On A/c	150
20-06-09	9:06	1274	P MANIK	HAN PAI	MA	220	17:30	1 CA	On A/c	220
21-06-09	10:15	1283	Narsimha	HAN PAI	MH	150	18:30	1 CA	On A/c	150
21-06-09	10:15	1273	T SRINU	HAN PAI	MA	220	18:30	1 CA	On A/c	220
21-06-09	16:25	1276	MADHU	HAN PAI	MA	220	18:00	0 CA	On A/c	0
22-06-09	9:10	1276	MADHU	HAN PAI	MA	220	17:35	1 I	On A/c	220
22-06-09	9:11	1274	P MANIK	HAN PAI	MA	220	17:40	1 I	On A/c	220
22-06-09	9:12	1273	T SRINU	HAN PAI	MA	220	17:40	1 I	On A/c	220
22-06-09	9:12	1275	V VENKATESH	HAN PAI	MA	220	17:30	1 I	On A/c	220
22-06-09	9:13	1283	Narsimha	HAN PAI	MH	150	17:30	1 I	On A/c	150
22-06-09	9:13	1321	MANIKAPPA	HAN PAI	MH	150	17:30	1 I	On A/c	150
23-06-09	9:08	1321	MANIKAPPA	HAN PAI	MH	150	17:40	1 35	On A/c	150
23-06-09	9:08	1283	Narsimha	HAN PAI	MH	150	17:40	1 I	On A/c	150
23-06-09	9:08	1273	T SRINU	HAN PAI	MA	220	17:40	1 I	On A/c	220
23-06-09	9:08	1274	P MANIK	HAN PAI	MA	220	17:30	1 I	On A/c	220
23-06-09	9:09	1276	MADHU	HAN PAI	MA	220	17:30	1 35	On A/c	220
24-06-09	9:17	1278	T HANUMANTH	HAN PAI	MA	220	17:46	1 35	On A/c	220
24-06-09	9:17	1327	Ramesh	HAN PAI	MH	150	17:45	1 35	On A/c	150
24-06-09	9:17	1275	V VENKATESH	HAN PAI	MA	220	17:46	1 35	On A/c	220
24-06-09	9:17	1276	MADHU	HAN PAI	MA	220	14:15	0.5 35	On A/c	110
24-06-09	9:18	1273	T SRINU	HAN PAI	MA	220	17:40	1 35	On A/c	220
24-06-09	9:18	1274	P MANIK	HAN PAI	MA	220	17:30	1 35	On A/c	220
24-06-09	9:19	1283	Narsimha	HAN PAI	MH	150	17:35	1 35	On A/c	150
24-06-09	9:19	1321	MANIKAPPA	HAN PAI	MH	150	17:35	1 35	On A/c	150
25-06-09	9:19	1274	P MANIK	HAN PAI	MA	220	18:00	1 35	On A/c	220
25-06-09	9:19	1273	T SRINU	HAN PAI	MA	220	18:00	1 35	On A/c	220
25-06-09	9:19	1276	MADHU	HAN PAI	MA	220	18:00	1 35	On A/c	220
25-06-09	9:20	1278	T HANUMANTH	HAN PAI	MA	220	18:00	1 35	On A/c	220
25-06-09	9:20	1283	Narsimha	HAN PAI	MH	150	18:00	1 35	On A/c	150
25-06-09	9:20	1321	MANIKAPPA	HAN PAI	MH	150	18:00	1 35	On A/c	150
25-06-09	9:21	1275	V VENKATESH	HAN PAI	MA	220	18:00	1 35	On A/c	220
25-06-09	9:21	1327	Ramesh	HAN PAI	MH	150	18:00	1 35	On A/c	150
25-06-09	13:15	1328	Srinivas	HAN PAI	MH	150	18:00	0.5 I	On A/c	75
26-06-09	9:09	1278	T HANUMANTH	HAN PAI	MA	220	17:30	1 35	On A/c	220
26-06-09	9:10	1274	P MANIK	HAN PAI	MA	220	17:30	1 35	On A/c	220
26-06-09	9:10	1283	Narsimha	HAN PAI	MH	150	17:40	1 35	On A/c	150
26-06-09	9:10	1321	MANIKAPPA	HAN PAI	MH	150	17:30	1 I	On A/c	150
26-06-09	9:10	1275	V VENKATESH	HAN PAI	MA	220	17:30	1 35	On A/c	220
26-06-09	9:10	1276	MADHU	HAN PAI	MA	220	17:30	1 35	On A/c	220
26-06-09	9:10	1273	T SRINU	HAN PAI	MA	220	17:30	1 I	On A/c	220
26-06-09	9:11	1327	Ramesh	HAN PAI	MH	150	17:40	1 35	On A/c	150
27-06-09	9:09	1275	V VENKATESH	HAN PAI	MA	220	17:40	1 I	On A/c	220
27-06-09	9:09	1273	T SRINU	HAN PAI	MA	220	17:40	1 I	On A/c	220
27-06-09	9:09	1327	Ramesh	HAN PAI	MH	150	17:43	1 35	On A/c	150
27-06-09	9:09	1274	P MANIK	HAN PAI	MA	220	17:42	1 35	On A/c	220
27-06-09	9:10	1276	MADHU	HAN PAI	MA	220	17:40	1 I	On A/c	220
27-06-09	9:10	1321	MANIKAPPA	HAN PAI	MH	150	17:40	1 35	On A/c	150
27-06-09	9:10	1283	Narsimha	HAN PAI	MH	150	17:40	1 35	On A/c	150
28-06-09	9:00	1275	V VENKATESH	HAN PAI	MA	220	17:30	1 35	On A/c	220
28-06-09	9:00	1273	T SRINU	HAN PAI	MA	220	17:30	1 35	On A/c	220
28-06-09	9:01	1274	P MANIK	HAN PAI	MA	220	17:30	1 35	On A/c	220
28-06-09	9:01	1327	Ramesh	HAN PAI	MH	150	17:30	1 I	On A/c	150
28-06-09	9:02	1283	Narsimha	HAN PAI	MH	150	17:30	1 I	On A/c	150
28-06-09	9:02	1321	MANIKAPPA	HAN PAI	MH	150	17:30	1 I	On A/c	150
29-06-09	9:17	1274	P MANIK	HAN PAI	MA	220	17:30	1 I	On A/c	220

13-07-09	9:03	1274	P MANIK	HAN PAI	MA	220	17:30	1	1	On A/c	220
13-07-09	11:00	1275	V VENKATESH	HAN PAI	MA	220	17:43	1	1	On A/c	220
13-07-09	11:00	1276	MADHU	HAN PAI	MA	220	17:43	1	1	On A/c	220
14-07-09	9:19	1273	T SRINU	HAN PAI	MA	220	17:43	1	1	On A/c	220
14-07-09	9:19	1274	P MANIK	HAN PAI	MA	220	17:43	1	1	On A/c	220
14-07-09	9:19	1275	V VENKATESH	HAN PAI	MA	220	17:45	1	1	On A/c	220
14-07-09	9:19	1321	MANIKAPPA	HAN PAI	MH	150	17:43	1	1	On A/c	150
14-07-09	9:19	1283	Narsimha	HAN PAI	MH	150	17:46	1	1	On A/c	150
16-07-09	10:30	1275	V VENKATESH	HAN PAI	MA	220	17:46	1	1	On A/c	220
16-07-09	10:30	1276	MADHU	HAN PAI	MA	220	17:46	1	1	On A/c	220
16-07-09	10:30	1273	T SRINU	HAN PAI	MA	220	17:47	1	1	On A/c	220
17-07-09	9:30	1276	MADHU	HAN PAI	MA	220	17:43	1	1	On A/c	220
17-07-09	9:30	1275	V VENKATESH	HAN PAI	MA	220	7:45	1	1	On A/c	220
17-07-09	9:30	1321	MANIKAPPA	HAN PAI	MH	150	17:46	1	1	On A/c	150
21-07-09	9:30	1283	Narsimha	HAN PAI	MH	150	17:45	1	1	On A/c	150
21-07-09	9:30	1274	P MANIK	HAN PAI	MA	220	17:43	1	1	On A/c	220
21-07-09	9:31	1276	MADHU	HAN PAI	MA	220	17:49	1	1	On A/c	220
21-07-09	9:31	1273	T SRINU	HAN PAI	MA	220	17:48	1	1	On A/c	220
21-07-09	9:35	1275	V VENKATESH	HAN PAI	MA	220	17:49	1	1	On A/c	220
21-07-09	9:40	1321	MANIKAPPA	HAN PAI	MH	150	17:43	1	1	On A/c	150
22-07-09	7:09	1274	P MANIK	HAN PAI	MA	220	17:30	1.25	60	On A/c	275
22-07-09	7:09	1283	Narsimha	HAN PAI	MH	150	17:30	1.25	60	On A/c	187.5
22-07-09	9:08	1275	V VENKATESH	HAN PAI	MA	220	17:30	1	1	On A/c	220
22-07-09	9:08	1321	MANIKAPPA	HAN PAI	MH	150	17:30	1	1	On A/c	150
22-07-09	9:26	1276	MADHU	HAN PAI	MA	220	17:30	1	1	On A/c	220
22-07-09	11:26	1273	T SRINU	HAN PAI	MA	220	17:30	1	1	On A/c	220
23-07-09	6:00	1283	Narsimha	HAN PAI	MH	150	18:00	1	1	On A/c	150
23-07-09	6:05	1275	V VENKATESH	HAN PAI	MA	220	18:00	1	1	Dept.	220
23-07-09	6:05	1274	P MANIK	HAN PAI	MA	220	18:00	1	1	Dept.	220
23-07-09	9:05	1321	MANIKAPPA	HAN PAI	MH	150	18:00	1	1	On A/c	150
23-07-09	9:06	1276	MADHU	HAN PAI	MA	220	18:00	1	1	Dept.	220
23-07-09	9:06	1273	T SRINU	HAN PAI	MA	220	18:00	1	1	Dept.	220
24-07-09	6:00	1274	P MANIK	HAN PAI	MA	220	18:00	1.5	CC	On A/c	330
24-07-09	6:01	1275	V VENKATESH	HAN PAI	MA	220	18:00	1.5	CC	On A/c	330
24-07-09	9:02	1283	Narsimha	HAN PAI	MH	150	17:30	1	CC	On A/c	150
24-07-09	10:00	1273	T SRINU	HAN PAI	MA	220	17:50	1	CC	On A/c	220
24-07-09	10:00	1276	MADHU	HAN PAI	MA	220	17:50	1	CC	On A/c	220
25-07-09	11:48	1273	T SRINU	HAN PAI	MA	220	18:35	1	CC	On A/c	220
25-07-09	11:48	1274	P MANIK	HAN PAI	MA	220	18:46	1	CC	On A/c	220
25-07-09	11:48	1283	Narsimha	HAN PAI	MH	150	18:47	1	CC	On A/c	150
25-07-09	11:49	1276	MADHU	HAN PAI	MA	220	18:49	1	CC	On A/c	220
26-07-09	9:00	1275	V VENKATESH	HAN PAI	MA	220	17:30	1	CC	On A/c	220
26-07-09	9:00	1283	Narsimha	HAN PAI	MH	150	17:30	1	CC	On A/c	150
26-07-09	9:01	1274	P MANIK	HAN PAI	MA	220	17:30	1	CC	On A/c	220
27-07-09	9:13	1273	T SRINU	HAN PAI	MA	220	17:45	1	CC	On A/c	220
27-07-09	9:13	1283	Narsimha	HAN PAI	MH	150	17:30	1	CC	On A/c	150
27-07-09	9:14	1276	MADHU	HAN PAI	MA	220	17:30	1	CC	On A/c	220
27-07-09	9:14	1274	P MANIK	HAN PAI	MA	220	17:30	1	CC	On A/c	220
28-07-09	9:06	1275	V VENKATESH	HAN PAI	MA	220	17:43	1	CC	On A/c	220
29-07-09	10:40	1275	V VENKATESH	HAN PAI	MA	220	17:45	1	CC	On A/c	220
30-07-09	9:07	1275	V VENKATESH	HAN PAI	MA	220	17:43	1	35	On A/c	220
30-07-09	10:20	1274	P MANIK	HAN PAI	MA	220	17:45	1	35	On A/c	220
30-07-09	10:20	1273	T SRINU	HAN PAI	MA	220	17:46	1	35	On A/c	220
30-07-09	10:20	1276	MADHU	HAN PAI	MA	220	14:00	0.5	35	On A/c	110
31-07-09	9:09	1276	MADHU	HAN PAI	MA	220	14:00	0.5	CC	On A/c	110
31-07-09	9:09	1273	T SRINU	HAN PAI	MA	220	17:46	1	CC	On A/c	220
31-07-09	9:09	1321	MANIKAPPA	HAN PAI	MH	150	17:45	1	CC	On A/c	150
01-08-09	10:16	1273	T SRINU	HAN PAI	MA	220	14:00	0.5	CC	On A/c	110

10-09-09	9:50	1321	MANIKAPPA	HAN	PAI	MH	150	18:00	1	CA	Dept.	150
10-09-09	9:50	1275	V VENKATESH	HAN	PAI	MA	220	18:00	1	CA	Dept.	220
16-09-09	11:40	1275	V VENKATESH	HAN	PAI	MA	220	18:00	1	CA	On A/c	220
16-09-09	11:40	1276	MADHU	HAN	PAI	MA	220	18:00	1	CA	On A/c	220
16-09-09	11:40	1283	Narsimha	HAN	PAI	MH	150	18:00	1	CA	On A/c	150
17-09-09	10:00	1275	V VENKATESH	HAN	PAI	MA	220	18:00	1	CA	On A/c	220
17-09-09	10:00	1276	MADHU	HAN	PAI	MA	220	18:00	1	CA	On A/c	220
17-09-09	10:00	1283	Narsimha	HAN	PAI	MH	150	18:00	1	CA	On A/c	150
18-09-09	10:05	1276	MADHU	HAN	PAI	MA	220	18:00	1	CA	On A/c	220
18-09-09	10:05	1275	V VENKATESH	HAN	PAI	MA	220	14:00	0.5	CA	On A/c	110
22-09-09	10:00	1276	MADHU	HAN	PAI	MA	220	18:00	1	1	On A/c	220
22-09-09	10:00	1275	V VENKATESH	HAN	PAI	MA	220	18:00	1	1	On A/c	220
07-10-09	10:30	1276	MADHU	HAN	PAI	MA	220	18:00	1	35	On A/c	220
07-10-09	10:30	1273	T SRINU	HAN	PAI	MA	220	18:00	1	35	On A/c	220
07-10-09	10:30	1274	P MANIK	HAN	PAI	MA	220	18:00	1	35	On A/c	220
07-10-09	10:30	1275	V VENKATESH	HAN	PAI	MA	220	18:00	1	35	On A/c	220
07-10-09	10:31	1278	T HANUMANTH	HAN	PAI	MA	220	18:00	1	35	On A/c	220
07-10-09	10:31	1321	MANIKAPPA	HAN	PAI	MH	150	18:00	1	35	On A/c	150
07-10-09	10:31	1283	Narsimha	HAN	PAI	MH	150	18:00	1	35	On A/c	150
08-10-09	9:35	1321	MANIKAPPA	HAN	PAI	MH	150	18:00	1	1	On A/c	150
08-10-09	9:35	1276	MADHU	HAN	PAI	MA	220	18:00	1	1	On A/c	220
08-10-09	9:35	1274	P MANIK	HAN	PAI	MA	220	18:00	1	1	On A/c	220
08-10-09	9:35	1275	V VENKATESH	HAN	PAI	MA	220	18:00	1	1	On A/c	220
08-10-09	9:35	1273	T SRINU	HAN	PAI	MA	220	18:00	1	1	On A/c	220
08-10-09	9:35	1278	T HANUMANTH	HAN	PAI	MA	220	18:00	1	1	On A/c	220
08-10-09	9:40	1283	Narsimha	HAN	PAI	MH	150	18:00	1	1	On A/c	150
09-10-09	6:05	1274	P MANIK	HAN	PAI	MA	220	18:00	1.5	1	On A/c	330
09-10-09	6:05	1321	MANIKAPPA	HAN	PAI	MH	150	18:00	1.5	61	On A/c	225
09-10-09	9:04	1275	V VENKATESH	HAN	PAI	MA	220	18:00	1	1	On A/c	220
09-10-09	9:05	1276	MADHU	HAN	PAI	MA	220	18:00	1	38	On A/c	220
09-10-09	9:09	1283	Narsimha	HAN	PAI	MH	150	14:00	0.5	1	On A/c	75
09-10-09	9:15	1273	T SRINU	HAN	PAI	MA	220	14:00	0.5	1	On A/c	110
28-10-09	10:30	1276	MADHU	HAN	PAI	MA	220	18:00	1	1	On A/c	220
28-10-09	10:30	1275	V VENKATESH	HAN	PAI	MA	220	18:00	1	1	On A/c	220
28-10-09	10:30	1283	Narsimha	HAN	PAI	MH	150	18:00	1	1	On A/c	150
29-10-09	10:30	1283	Narsimha	HAN	PAI	MH	150	18:00	1	CA	Job Work	150
29-10-09	10:30	1276	MADHU	HAN	PAI	MA	220	18:00	1	CA	Job Work	220
29-10-09	10:30	1275	V VENKATESH	HAN	PAI	MA	220	18:00	1	CA	Job Work	220
03-11-09	10:30	1321	MANIKAPPA	HAN	PAI	MH	150	18:00	1	CA	On A/c	150
03-11-09	10:31	1274	P MANIK	HAN	PAI	MA	220	18:00	1	CA	On A/c	220
05-11-09	10:30	1273	T SRINU	HAN	PAI	MA	220	18:00	1	1	On A/c	220
05-11-09	10:30	1327	Ramesh	HAN	PAI	MH	150	18:00	1	1	On A/c	150
12-11-09	9:11	1278	T HANUMANTH	HAN	PAI	MA	220	18:00	1	CA	On A/c	220
12-11-09	9:11	1276	MADHU	HAN	PAI	MA	220	18:00	1	CA	On A/c	220
12-11-09	9:11	1275	V VENKATESH	HAN	PAI	MA	220	18:00	1	CA	On A/c	220
26-11-09	9:20	1276	MADHU	HAN	PAI	MA	220	18:00	1	1	On A/c	220
26-11-09	9:30	1275	V VENKATESH	HAN	PAI	MA	220	18:00	1	1	On A/c	220

# KADAKIA & MODI HOUSING

# 5-4-187/3 & 4, II Floor, M.G. Road,  
Secunderabad - 500 003.  
Phone : +91-40-66335551

*file known*

Bloomdale

Sy. No. 1139, Shamirpet,  
M.G. Road,  
Hyderabad.

Sl. No. 1002

Date : 21/01/09

Consultant Inspection Report

The queries asked by engineers have been  
solved.

1) The elevational details in structural drawings  
are not clear. It has to be reconcile with  
the architect & give and we will give  
the required drawings

3) The pargola design will be in R.C.C.  
instead wooden. (we feel)

4)

*M. H. Kadakia*  
21/01/2009

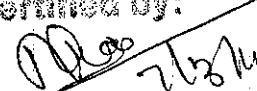
Engineer Sign.

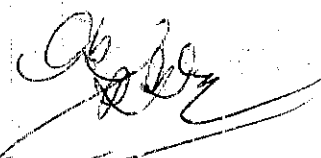
Consultant Sign.

**KADAKIA MODI HOUSING (BLOOMDALE) ELECTRICITY METERS  
BILLS - FEBRUARY 2011**

S.No	Bun.No	S.C.No	Bill Amount
1	Bungalow 54	0717-02106	165.00
2	Bungalow 10	0717-02107	165.00
3	Bungalow 60	0717-02108	165.00
4	Bungalow 39	0717-02109	165.00
5	Bungalow 21	0717-02110	165.00
6	1 Model Bungalow	0717-02111	165.00
7	Bungalow 12	0717-02112	165.00
8	35 Model Bungalow	0717-02113	165.00
9	Office Cat - II	0717-02114	221.00
10	Near Transformer Cat - II	0717-02115	221.00
11	Near Transformer Cat - II	0717-02116	221.00
12	Site Use	0717-01746	12584.00
			<b>14567.00</b>

*Receipt*

Certified by:  
  
Asst. Admin Manager  
KADAKIA & MODI HOUSING



Work orders statement as on 20.02.11		Kadakia and Modi Housing									
S.no	Particulars	Work order no	2009-10	2010-11	On account paid	2009-10	2010-11	Bills Received	Balance		
1	KGJ Marble	1166/1180/1181	102933		102933	102933		102933	0		
2	Ramulu	1169/1178	129767		129767	129767		129767	0		
3	Purnima Mosaic Tiles	1178	8299		8299	8299		8299	0		
4	Abul Malik	1179	16776		16776	16776		16776	0		
5	KGJ Marble	1197	16875		16875	16875		16875	0		
5	KGJ Marble	4001	0	107	107	0	29000	29000	28893		
6	Ramulu	1182	59403	0	59403	59329	74	59403	0		
7	Mallesht(Water Proofing)	1212	38400	3600	42000	42000	0	42000	0		
8	Anisha Associates	1176	37661	6089	43750	43750		43750	0		
9	Anisha Associates	2927		41035	41035		103500	103500	62465		
10	Gagan Rout	1469		15000	15000		16500	16500	1500		
11	Gagan Rout	1245		50500	50500		50500	50500	0		
12	Gagan Rout	1468		10174	10174		23994	23994	13820		
13	Gagan Rout	2716		5045	5045		17500	17500	12455		
14	KGJ Marble	1230/1231/1234/1238		194602	194602		161078	161078	-33524		
15	Purnima Mosaic Tiles	2139		40	40		8000	8000	7960		
16	Ramulu	1246 & 117		210074	210074		180280	180280	-29794		
16	Ramulu	1235		143648	143648		143648	143648	0		
17	Grand total		410114	679914	1090028	419729	734074	1153803	63775		

V. Srinivasan

Verified with Tally  
A. Sambasivaram  
23/2/11

## Kadokia & Modi Housing

# 5-4-187/3 & 4, II Floor,  
Soham Mansion, M.G. Road,  
Secunderabad - 500 003.

### Work Orders

Group Summary

1-Apr-2010 to 17-Feb-2011

Page


	Opening Balance	Transactions		Closing Balance
		Debit	Credit	
Anisha Associates W.No 2927 dt 26.11.10		41,035.00	1,03,500.00	62,465.00 C
Anisha Associates Wo No.1176	6,089.00 Cr	6,089.00		
Gagan Raut W.No.1469		15,000.00	16,500.00	1,500.00 C
Gagan Raut W.O.No.1245		50,500.00	50,500.00	
Gagan Rout W.No 1468 dt 23.08.10		10,174.00	23,994.00	13,820.00 C
Gagan Rout W.No No 2716 dt 13.11.10		5,045.00	17,500.00	12,455.00 C
K:G.N.Marbles W.O.No.1230,1231,1234,1238		1,94,602.00	1,61,078.00	33,524.00 E
KGN Marble W.No 4001 dt 05.02.11		107.00	29,000.00	28,893.00 C
Mallesh (Water Proofing)	3,600.00 Cr	3,600.00		
Purnima Mosaic Tiles W.No 2139 dt 06.10.10		40.00	8,000.00	7,960.00 C
Ramulu W.O.1246 & 117		2,10,074.00	1,80,280.00	29,794.00 E
Ramulu Wo No.1182	74.00 Dr		74.00	
Ramulu W.O. No.1235		1,43,648.00	1,43,648.00	
<b>Grand Total</b>	<b>9,615.00 Cr</b>	<b>6,79,914.00</b>	<b>7,34,074.00</b>	<b>63,775.00 C</b>

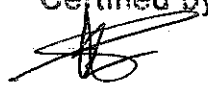


# KADAKIA MODI HOUSING (BLOOMDALE) ELECTRICITY METERS BILLS - JANUARY 2011

S.No	Bun.No	S.C.No	Bill Amount
1	Bungalow 54	0717-02106	165.00 ✓
2	Bungalow 10	0717-02107	165.00 ✓
3	Bungalow 60	0717-02108	165.00 ✓
4	Bungalow 39	0717-02109	165.00 ✓
5	Bungalow 21	0717-02110	165.00 ✓
6	1 Model Bungalow	0717-02111	165.00 ✓
7	Bungalow 12	0717-02112	167.00 ✓
8	35 Model Bungalow	0717-02113	165.00 ✓
9	Office Cat - II	0717-02114	220.00 ✓
10	Near Transformer Cat - II	0717-02115	220.00 ✓
11	Near Transformer Cat - II	0717-02116	220.00 ✓
12	Site Use	0717-01746	14516.00 ✓
			<b>16498.00</b>



**Certified by:**  
  
 10/1/11  
 Asst. Admin Manager  
 KADAKIA & MODI HOUSING

**Certified by:**  
  
 Project Manager/Engg.  
 KADAKIA & MODI HOUSING

**Kadokia & Modi Housing**

# 5-4-187/3 & 4, II Floor,  
Soham Mansion, M.G. Road,  
Secunderabad - 500 003.

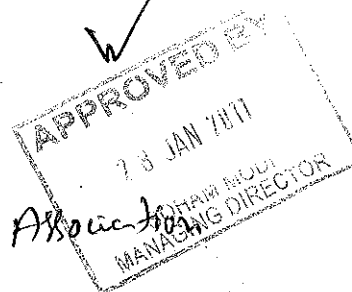
**Bloomdale Owners Association**

Ledger Account

1-Apr-2010 to 22-Jan-2011

Date	Particulars	Cheque No	Vch Type	Vch No.	Narration	Debit	Page Crec
30-8-2010	To HDFC - S.D.Road	968894	Bank Payment	BP-4	Ch. No. :968894 being chq issued towards pur of receipt books of bloomdale vide bill no. 898 dt.10.08.10	580.00	
6-9-2010	To HDFC - S.D.Road	968933	Bank Payment	BP-3	Ch. No. :968933 being chq issued to Bloomdale Owners Association towards current account opening charges with HDFC Bank, S.D.Road Branch. Secunderabad	10,000.00	
	To HDFC - S.D.Road	968942	Bank Payment	BP-12	Ch. No. :968942 being chq issued to Priyanka Printers towards pur of Bloomdale debit vouchers vide bill no.908 dt.23.08.10	930.00	
23-10-2010	To HDFC - S.D.Road	043323	Bank Payment	BP-20	Ch. No. :043323 being chq issued to BOA towards corpus fund on behalf of b.no.54 which received in KNM	50,000.00	
19-1-2011	By 39 - B.S.Prasad		Journal	JV-5	Being amount debited towards corpus fund on behalf of Bloomdale Owners Association		50,000.00
	By Closing Balance					61,510.00	50,000.00
							11,510.00
						61,510.00	61,510.00

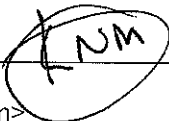
Receivable from Owners Association



AS Rao  
25/1/11

**KADAKIA & MODI HOUSING**

S.No.	Flat No	Area	Buyer Name	Booking Date	Sale Amt	Registration	Vat	Paid
1	10	185	Major Achyut Ranjan Mukherjee	09-Nov-09	3,450,000	Done	34,500	NO
2	12	199	Col KGA Kamaldev & Mrs.Sheela Jamesina	26-Dec-09	4,500,000	Done	45,000	NO
3	21	273	Mrs.S.Visala	01-Oct-08	5,000,000	Done	50,000	YES
4	35	187	Mrs.O.Santhi	10-Feb-09	4,200,000	No	42,000	NO
5	36	204	Dr.Anusha Bharatam	25-Sep-10	3,500,000	No	35,000	NO
6	38	240	Easo Varghese	08-Aug-09	4,619,000	Done	46,190	YES
7	39	216	Major B.S.Prasad	05-Oct-09	3,450,000	Done	34,500	NO
8	40	178	Mr.Ravi Rajashekar	08-Sep-10	3,653,000	Done	36,530	NO
9	54	212	Mr.Janardhan Reddy	27-Apr-09	4,668,000	Done	46,680	YES
10	58	295	Mr.B.Raja Rao	12-Apr-10	4,000,000	Done	40,000	NO
11	60	307	Mr.Sai Prashant & Mrs.Anjana Sai	14-Jan-09	5,300,000	No	53,000	NO
12	68	228	Mrs.Roopa Krishnan Iyer	04-Aug-08	4,800,000	No	48,000	NO
			<b>Total :</b>		<b>51,140,000</b>	<b>-</b>	<b>511,400</b>	

**Soham Modi**

**From:** "Srinivas N" <srinunsr@yahoo.com>  
**Date:** 08 December 2010 09:29  
**To:** <soham@modiproperties.com>  
**Cc:** <asr.agm@modiproperties.com>  
**Subject:** Proper information

Respected sir,

I never interfered into constructions works in any time. Mr Khyzer is thinking he is only working in the site, and others are not doing any work this kind of concept he is having.

On 2<sup>nd</sup> (Thursday) after your visit he left about at 4.45pm from the site with out information to admin person at that time I was there in the site, after half an hour I saw the movement register in that he wrote that he is going to architect's office. Previous also so many times this was happened. I my self adjusted why unnecessary headache

On 3<sup>rd</sup> Mr. Man Mohan engineer has taken leave with out intimation to admin person and he came late about 30 min on the next day also. Like this reaming people at site also not giving intimation to admin, and he is sending two persons to Head office on Saturdays one is phani Kumar and selva kumar with out intimation for me as a admin.

On the basis of above incidents I send a mail to KNM and mark a copy to Shanker Reddy sir and admin department "those who are taking leaves, half day permissions and late comings should intimate to admin who is in charge for the site"

Sir, I have no problem with him. From last 2 years I am working both sites, and with two different types of persons, even though I did not quarrel with any one my self adjusted with them. If he is having any problem with me, please change me from there, for me also very long distance getting back pain by traveling on bike.

Sir, Now my daughter is studying intermediate 2<sup>nd</sup> year till my daughters education completes, if you give a chance to work with you, I will continue because at present situation I need a job. In my 20 years experience in pharma industry I never blamed with any body.

Sir, If any thing wrong with me, I obey your instructions.

Regards

N.Srinivas Rao  
Asst Manager Admin  
MNM and KNM

8/12/10

**Soham Modi**

**From:** "Md Khizer" <modi\_khizer@yahoo.in>  
**Date:** 04 December 2010 12:27  
**To:** "soham modi" <Soham@modiproperties.com>  
**Subject:** complaint

Sir,

This is for you kind information that Mr.Srinivas Admin is not at all concern with his responsible. Since few weeks back I had many times politely said him to check the key's & tags of bungalows as well as important issues concerned to him because I found B.No:60 where paints are kept main door and exit door key were missing which later I found that its was with him for 2 to 3 weeks and the works were using terrace door for accesses in bungalow.

He has very casual approach to his duties. He passes time in site office unrelated discussion with other in office he himself plays soliters games on systems often But I never said to you but I used to tell him that as he has very few time to spend at our site so plz take some instead to check us and rectified on problems which will be finically good for us .But he as northing to do in this regard instead in reaction to my suggestion he as started creating making problems by telling Mr.Heminder (Admin Dept) to put absent for selva kumar (sup) because he did not took permission to go head office when I have personally sent him to get petty case as well as purchase of 2no's flow valve which were not available to fix . B.no:39 & 12.

There are other things to be disused at site visit if you permit sir,

Kindly take necessary step which is good for all of use.

Thanks,  
Regards  
Khizer

4/12/10

KNM

## Contractor-wise Detailed Report

Contractor

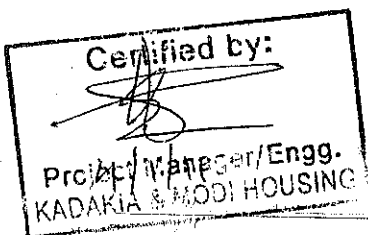
Damodar (Civil)

Block No

I

Work Desc	Flat or floor No	Bill Amount	Rate
Civil Work - LS	10	40,500.00	25.00
Civil Work - LS	10	64,800.00	40.00
Civil Work - LS	12	48,200.00	25.00
Civil Work - LS	12	46,272.00	24.00
Civil Work - LS	12	30,848.00	16.00
Civil Work - LS	38	32,400.00	20.00
Civil Work - LS	38	72,900.00	45.00
Civil Work - LS	39	81,000.00	50.00
Civil Work - LS	39	32,400.00	20.00
Civil Work - LS	54	80,550.00	45.00
Civil Work - LS	54	35,800.00	20.00
Civil Work - LS	58	46,175.00	25.80
Civil Work - LS	58	31,399.00	17.54
Civil Work - LS	58	51,716.00	28.89
Civil Work - LS	CA	18,581.00	0.12
Civil Work - LS	Club House	1,552.50	0.31
Civil Work - Misc.	10	8,100.00	5.00
Civil Work - Misc.	12	9,640.00	5.00
Civil Work - Misc.	CA	47,264.00	0.31
Civil Work - Misc.	CA	35,264.00	0.23
Civil Work - Misc.	CA	19,277.00	0.13
Civil Work - Misc.	CA	11,108.00	0.07
Civil Work - Misc.	CA	21,539.50	0.14
Civil Work - Misc.	CA	10,000.00	0.07
Civil Work - Misc.	CA	75,000.00	0.50
Civil Work - Misc.	CA	30,213.00	0.20
Civil Work - Misc.	CA	18,581.00	0.12
Civil Work - Misc.	CA	37,380.00	0.25
Civil Work - Misc.	Misc.	40,000.00	0.26
Sum		1,078,460.00	414.94
Sum		1,078,460.00	414.94
Grand Total		1,078,460.00	414.94

All Accounts Settled till today, I have no claims and no Balance Bills to be settled till today, i.e. 23/12/10. I shall not discuss of old bills or Rates which has settled after this date 23/12/10.



Swaraj  
(DAMODAR) 4/1/11

*Kadakkia 4 mooli Housing*  
**Mr SOHAM MODI .**  
 MODI PROPERTIES & INVESTMENTS P LTD  
 H NO: 5-4-187/3 & 4  
 2ND FLOOR, SOHAM MANSION,, M G ROAD  
 SECUNDERABAD  
 ANDHRA PRADESH - 500003

**TATA indicom**

*Usher*  
*Solo*  
*Usher*

Your Tata Indicom No. **09246116187**  
 Account Number **905310412**  
 Your Tariff Plan **Value 325 VData Plan**  
 Bill Number **943203110**  
 Bill Date **27/12/10**  
 Bill Period **25/11/10 to 24/12/10**  
 Credit Limit **7,400.00**  
 Security Deposit **0.01**

Acc No: 905310412 BSNO: 16



SGL\_D-122-4181

Previous Balance Rs. 800.00	Last Payment/ (Mode) Rs. -800.00 (CHEQUE)	Adjustments Rs. 0.00	Current Charges Rs. 358.48	=	^#Amount Due Before Due Date Rs. 358.00	*#Amount Due After Due Date Rs. 408.00	Due Date 13/01/11
--------------------------------	--	-------------------------	-------------------------------	---	---	--	----------------------

COST CENTERCODE :

^ Bill is rounded off to nearest rupee.

\* Includes Late payment fee

**\*\*Your Base Tariff Details**

(Methodology for calculation of bill amount)

Total Monthly Rentals	350.00	
<b>Outgoing Charges</b>	<b>Local Charges</b>	<b>STD Charges</b>
<b>To Tata Phones</b>		
FixedLines	Rs. 0.50 / 1 min	Rs. 1.50 / 1 min
Mobiles	Rs. 0.50 / 1 min	Rs. 1.50 / 1 min
<b>To Non-Tata Phones</b>		
FixedLines	Rs. 1.00 / 1 min	Rs. 1.50 / 1 min
Mobiles	Rs. 1.00 / 1 min	Rs. 1.50 / 1 min
<b>Outgoing ISD Call Charges</b>		
US&Canada	14.24 / 1 min	
UK	14.24 / 1 min	
<b>SMS Charges</b>		
Any other phones	1.00 per sms	
National	1.50 per sms	
TATA to TATA	0.50 per sms	

\*\*Rates differ for add-on pack. Rates are for maximum calling Jurisdiction.  
 For detailed ISD call charges please call customer care or visit [www.tataindicom.com](http://www.tataindicom.com)

**Sarkari Naukri**  
 Dial 129449 for your dream job.

Dial 129449 to know about various government jobs.  
 Download the information through SMS on to your device.  
 Government jobs search now at your fingertips.

*paid collection*  
*CON*  
**TATA indicom**

**Nearest Bill Payment Locations Cash - CA, Cheque - CH, Credit Card - CC**

1. C S N Xerox Corner, 3 & 4, HB Complex, S.P. Road, Secunderabad -(CA)
2. Sagar Communications, Plot No:1, J.B.S, Secunderabad -(CA)
3. S V COMMUNITION, Shop 36, Hardy Commercial Complex, Sec BAQ, Nokia Care, Hyderabad -(CA)
4. S R Travels, Shop Number 6-6-176, Jeera Sompam Matam, Secunderabad -(CA)
5. CH VENKATRAMAN, H.NO.1-3-162, KALASI GUDA, Secunderabad -(CA)

**Other Bill Payment Options:**



Instant Pay through Internet



Pay Through ITZ Card



Pay through Oxygen Outlets



Auto Pay through Bank Account / Credit Card

**Payment Slip**

Please attach this slip with your cheque/DD

Cheque/DD payable at TATA Teleservices Limited A/c No. 905310412



Account No. 905310412	9246116187	Bill Date 27/12/10	Due Date 13/01/11	Bill Amount Rs.358.00
Cheque / DD No. [ ]	Dated [ ]	Bank [ ]	Branch [ ]	
Mode of Payment :	<input type="checkbox"/> Cash	<input type="checkbox"/> Credit Card	<input type="checkbox"/> Cheque / DD	<input type="checkbox"/> E-Payment
I here by authorise TATA Teleservices Limited to charge Rs. [ ] against my card no. [ ]				
Master <input type="checkbox"/> VISA <input type="checkbox"/> Diners <input type="checkbox"/> Amex <input type="checkbox"/>	Card holder's name [ ]	Expiry Date(mm/yy) [ ]/[ ]	Signature [ ]	

Please register me for auto debit facility based on the above information.\* Conditions apply. For detailed terms & conditions, log onto [www.tataindicom.com](http://www.tataindicom.com)

**TATA indicom**

**TATA TELESERVICES LTD.**

Circle Office : Tata Teleservices Limited, 5-9-62, Khan Lateef Khan Building, Fateh Maidan Road, Hyderabad - 500 001  
 Registered Office : Tata Teleservices Limited, Jeevan Bharati, Tower 1, 10th Floor, 124 Connaught Circus, New Delhi - 110 001

Your TATA Indicom No.: 09246116187  
 Account Number 905310412  
 Your Tariff Plan Value 325 VData Plan

Bill Number 943203110  
 Bill Date 27/12/10  
 Bill Period 25/11/10 to 24/12/10  
 Credit Limit Rs. 7,400.00

### Details of Current Charges

Zone Detail SOUTH- AP,KA,CH,TN,KRL WEST- MH,GJ,MP NORTH- DL,RJ,PB,HR,HP,UPE,UPW,JK EAST- BH,OR,KOL,ROWB,AS,NE

		Charges (Rs.)	Totals (Rs.)
<b>1. Usage Charges</b>			
<b>Phone Calls</b>	<b>Number of Units</b>	<b>Duration (hh:mm:ss)</b>	
Free Calling Allowance 1800 Minutes Data free per month			-875.00
<b>Data Services</b>	<b>Total Numbers</b>		
Internet Usage (Units)	1750	875.00	875.00
<b>Total Usage Charges :</b>			<b>Rs. 0.00</b>
<b>2. Monthly Rentals</b>			
VData CLI Presentation Value 325 VData Plan Mont Rent		25.00 325.00	
<b>Total Monthly Rentals :</b>			<b>Rs. 350.00</b>
<b>3. Discounts and Other Charges</b>			
<b>Discounts</b>			
100% Discount on CLIP, CF, CW, 3WC, CB		-25.00	-25.00
<b>Total Discount and Other Charges :</b>			<b>Rs. -25.00</b>
<b>SUB TOTAL :</b>			<b>Rs. 325.00</b>
<b>4. Service Tax @ 10.0% (Excludes Handset EMI, wherever applicable)</b>			
Educational Cess @2% (On Service Tax)			Rs. 32.50
Secondary and Higher Educational Cess @1% (On Service Tax)			0.65
<b>Total Current Charges</b>			<b>Rs. 358.48</b>

### Payment Details:

Date 07/12/10	Payment Type Cheque Payment	Cheque No 043030	Amount (Rs.) 80
			<b>Total Payments:Rs.800.00</b>

Visit our Website at <a href="http://www.tataindicom.com">www.tataindicom.com</a>	Email us at <a href="mailto:customer-care.ap@tatatel.co.in">customer-care.ap@tatatel.co.in</a>	Dial 121 toll free from your TATA Indicom phone or 9246000121 from Other phones	Phone + toll free number 1800-266-121
<b>Public Grievance Mechanism:</b> if you are not satisfied with the response of the Customer Service Centre, Please contact the Nodal Officer of your circle with your complaint, reference number and details of the complaint/grievance from Monday to Friday at <a href="mailto:nodalofficer.AP@tatatel.co.in">nodalofficer.AP@tatatel.co.in</a> or Fax to 040 66553339 or Call at 9246399970			
<b>Customer Information :</b>			
(A) Migration to any other Tariff plan is absolutely free. (B) There will be no increase in tariff under any item for a period of six months from date of enrollment under your tariff plan. (C) We do not levy any charges for any additional service without your prior consent. (D) In case you disconnect our services, we will refund your security deposit, if any, within sixty days of closure of telephone connection in case of delay, you will earn interest on the security deposit @ 10% p.a. (E) To Know about model calculation of financial implication of tariff plans, please visit our website at <a href="http://www.tataindicom.com">www.tataindicom.com</a> . (F) Collection policy is updated on web and is available on demand @ TVH. (G) For making appeals to Appellate Authority please refer TRAI Regulation (3of2007) dated 4th May 2007 or contact RamaKrishna S at (040)66554000, Fax: (040) 66553339, Email: <a href="mailto:AppellateAuthority.ap@tatatel.co.in">AppellateAuthority.ap@tatatel.co.in</a> . (H) To avoid unwanted telemarketers calls, register your telephone number in NDNC Registry. Call 1909 or Send SMS "START DND" to 1909			
For change in Billing address	You can ask for change in billing address by calling our call centre at 121 or alternatively you can visit our nearest TVH/Public Office with the latest address proof.		
This bill includes payments due for services provided by TATA Teleservices Limited. It also includes payments for services/equipments provided by Wireless TATA Tele Info Services Limited and DriveIndia Enterprise Solutions Limited, recoverable by TATA Teleservices Limited on their behalf. STR: ST/TS/Bel-VM-VI/1/98 (Assessee Code : 4273070988) Service Tax Reg No. AAAC2438AST007. Service Category: Telecommunication Services. PAN NO AAAC2438A			