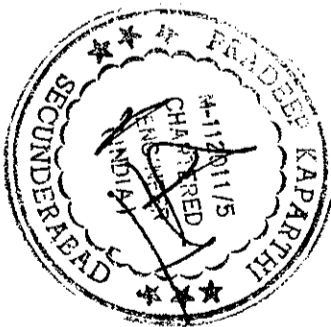
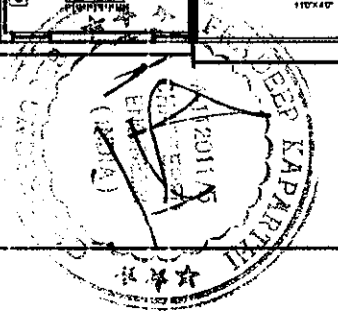
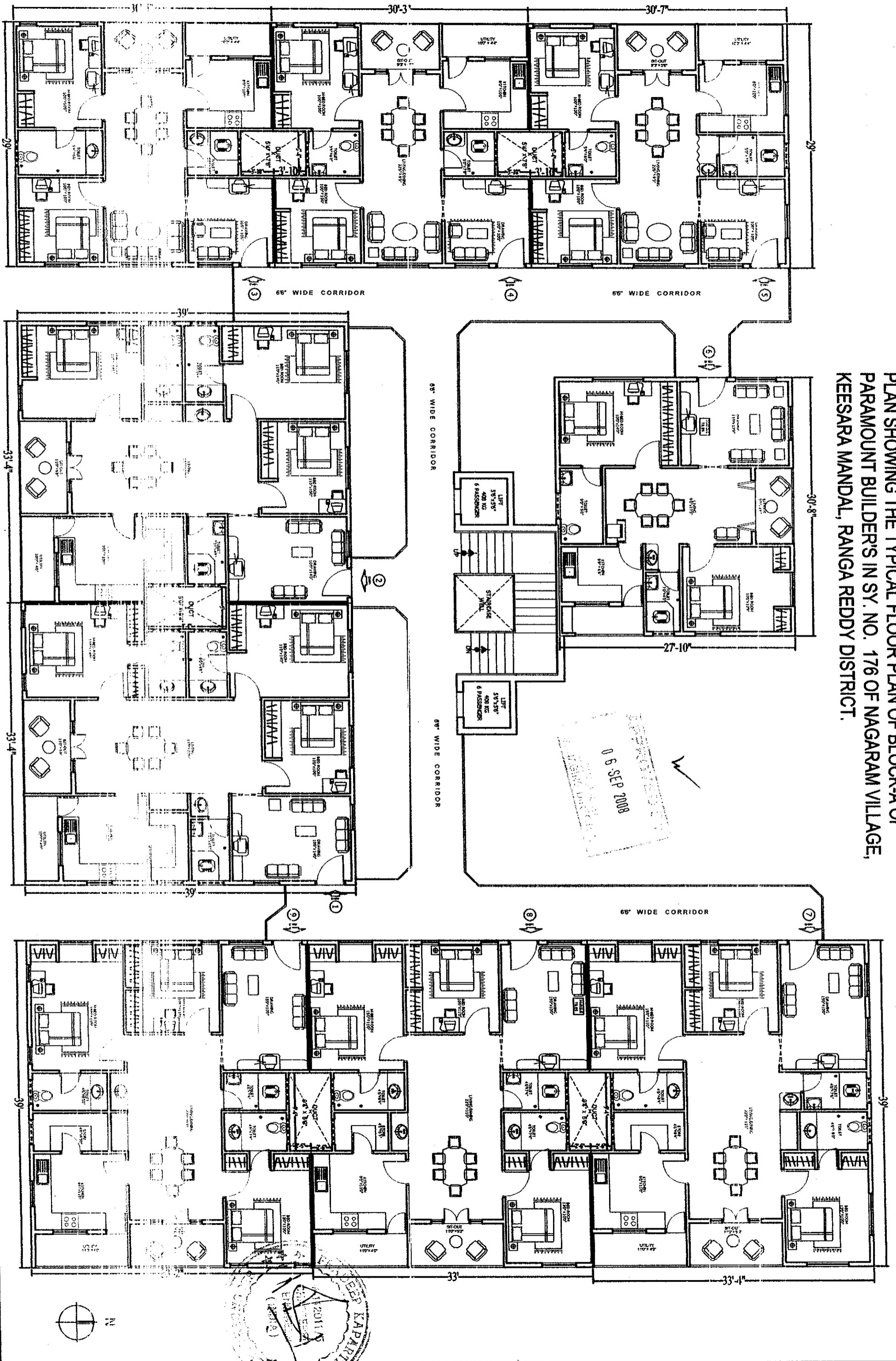


BUILT UP AREA CALCULATIONS OF TYPICAL FLOOR PLAN OF BLOCK-A OF PARAMOUNT BUILDER'S											
IN SY.NO.176 OF NAGARAM VILLAGE,KEESARA MANDAL,RANGA REDDY DISTRICT.											
S.No.	Flat no.s	Length-ft	Width-ft	Area-sft (A)	Duct length	Duct width	Duct area( B )	Built Up Area =(A-B)	Common Area-sft (C)	Super BuiltUp Area - sft=(A-B)+C	
1	1 & 2	39.00	33.33	1299.87	9.33	5.00	46.65	1253.22	346.78	1600.00	
2	3	30.41	29.00	881.89	3.83	5.33	20.41	861.48	213.52	1075.00	
3	4	30.25	29.00	877.25	7.66	5.33	40.83	836.42	238.58	1075.00	
4	5	30.58	29.00	886.82	3.83	5.33	20.41	866.41	208.59	1075.00	
5	6	27.83	30.66	853.27	0.00	0.00	0.00	853.27	221.73	1075.00	
6	7	33.33	39.00	1299.87	2.50	9.33	23.33	1276.55	323.46	1600.00	
7	8	33.00	39.00	1287.00	5.00	9.33	46.65	1240.35	359.65	1600.00	
8	9	33.16	39.00	1293.24	2.50	9.33	23.33	1269.92	330.09	1600.00	



APPROVED BY  
06 SEP 2008  
DIRECTOR

PLAN SHOWING THE TYPICAL FLOOR PLAN OF BLOCK-A OF  
 PARAMOUNT BUILDERS IN SY. NO. 176 OF NAGARAM VILLAGE,  
 KEESARA MANDAL, RANGA REDDY DISTRICT.

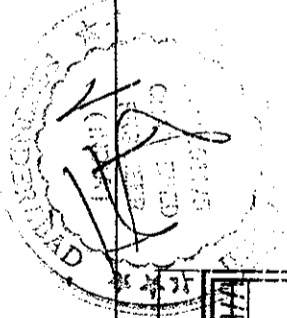
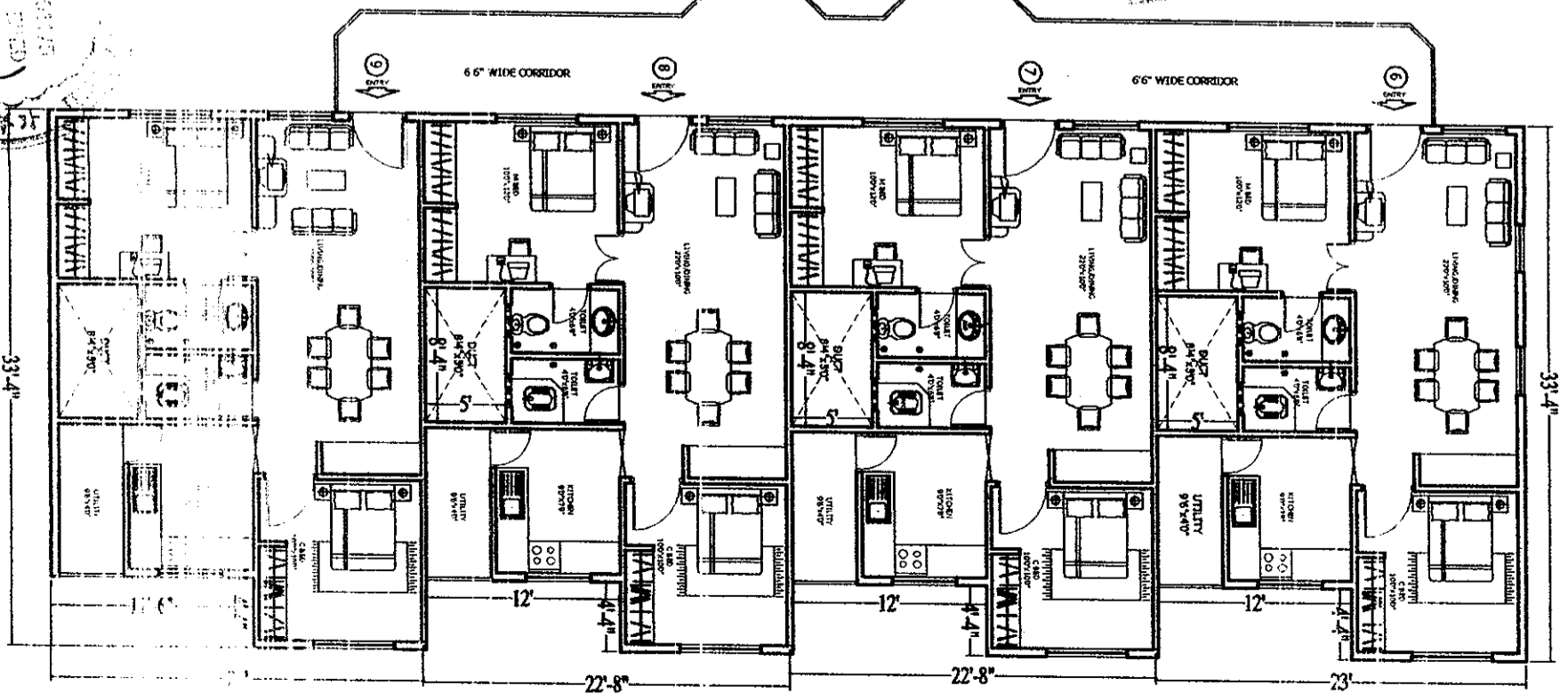
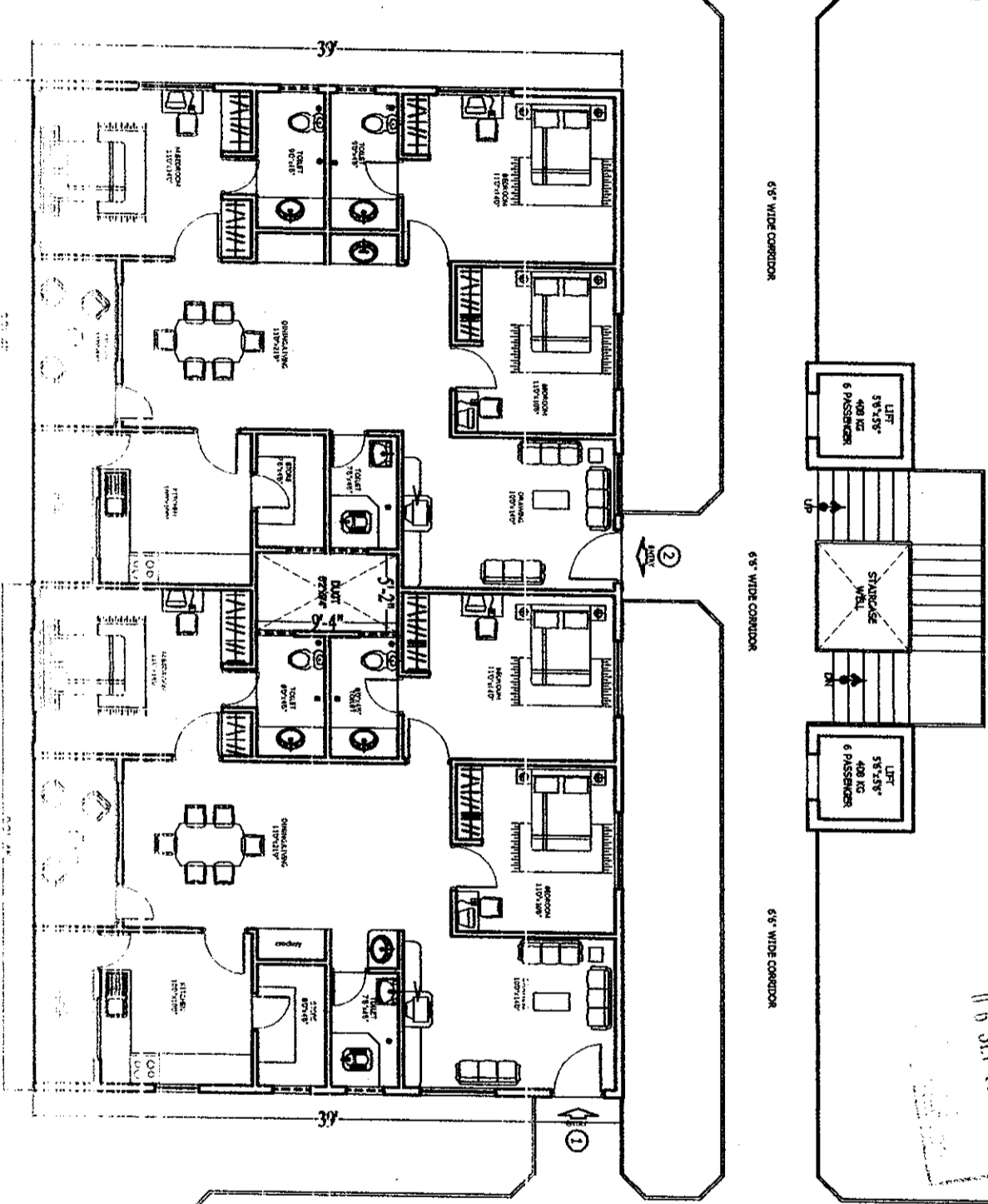
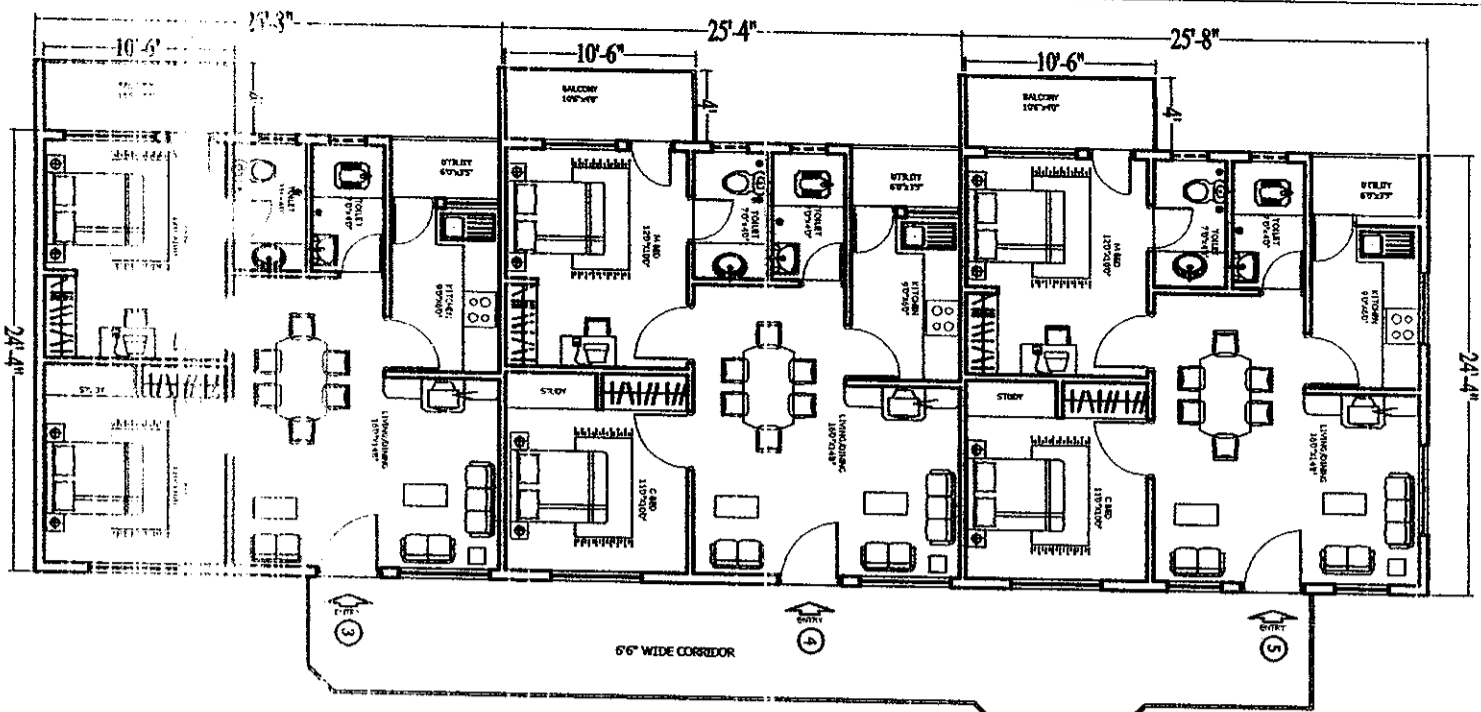


BUILT UP AREA CALCULATIONS OF TYPICAL FLOOR PLAN OF BLOCK-B OF PARAMOUNT BUILDER'S													
IN SY.NO.176 OF NAGARAM VILLAGE,KEESARA MANDAL,RANGA REDDY DISTRICT.													
S.No.	Flat no.s	Length-ft	Width-ft	Area-sft (A)	Bal.Length-ft	Bal.width-ft	Balcony Area-sft(B)	Duct length	Duct width	Duct area(C)	Built Up Area=(A+B-C)	Common Area-sft (D)	Super Built Up Area-sft=(A+B-C)+D
1	1 & 2	39.00	33.33	1299.87	0.00	0.00	0.00	9.33	5.16	48.14	1251.73	348.27	1600.00
2	3 & 5	25.66	24.33	624.31	10.50	4.00	42.00	0.00	0.00	0.00	666.31	163.69	830.00
3	4	25.33	24.33	616.28	10.50	4.00	42.00	0.00	0.00	0.00	658.28	171.72	830.00
4	6 & 9	23.00	33.33	766.59	0.00	0.00	0.00	12.00	4.33	51.96	672.98	157.02	830.00
5	7 & 8	22.66	33.33	755.26	0.00	0.00	0.00	12.00	4.33	51.96	661.65	168.35	830.00



APPROVED BY  
 06 SEP 2008

PLAN SHOWING THE TYPICAL FLOOR PLAN OF BLOCK-B OF  
 PARAMOUNT BUILDERS IN SY. NO. 176 OF NAGARAM VILLAGE,  
 KEESARA MANDAL, RANGA REDDY DISTRICT.

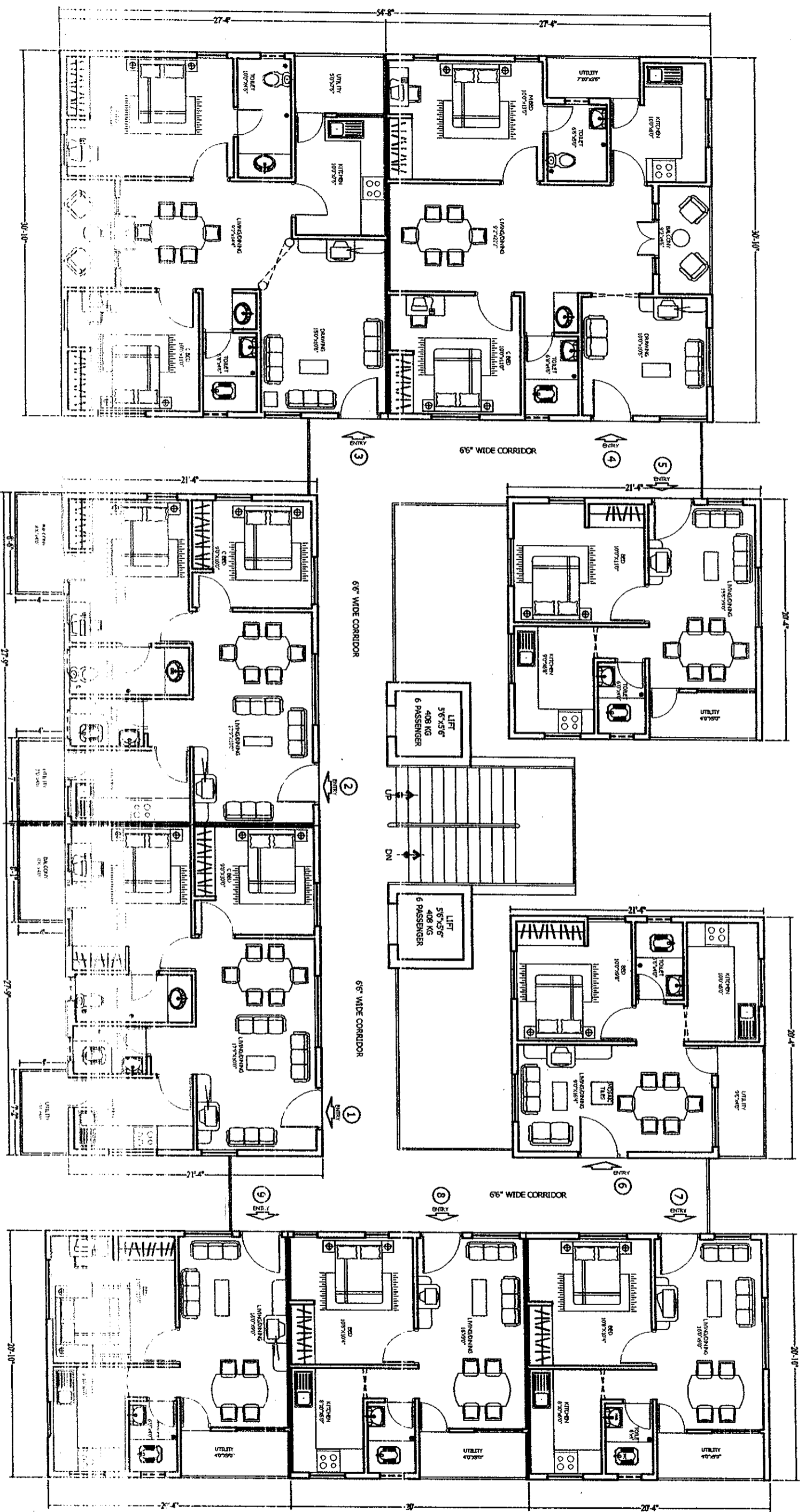


<b>BUILT UP AREA CALCULATIONS OF TYPICAL FLOOR PLAN OF BLOCK-1C OF PARAMOUNT BUILDER'S</b>										
<b>IN SY.NO.176 OF NAGARAM VILLAGE,KEESARA MANDAL,RANGA REDDY DISTRICT.</b>										
S.No.	Flat no.s	Length-ft	Width-ft	Area-sft (A)	Bal.Length-ft	Bal.width-ft	Balcony Area-sft(B)	Built Up Area=(A+B)	Common Area-sft (C)	Super Built Up Area-sft=(A+B+C)
1	1&2	21.33	27.75	591.91	4.00	15.66	62.64	654.55	165.45	820.00
2	3 & 4	27.33	30.83	842.58	0.00	0.00	0.00	842.58	207.42	1050.00
3	5 & 6	21.33	20.33	433.64	0.00	0.00	0.00	433.64	96.36	530.00
4	7 & 9	20.33	20.83	423.47	0.00	0.00	0.00	423.47	106.53	530.00
5	8	20	20.83	416.60	0.00	0.00	0.00	416.60	113.40	530.00



APPROVED BY  
05 SEP 2008

PLAN SHOWING THE TYPICAL FLOOR PLAN OF BLOCK-1C OF  
 PARAMOUNT BUILDER'S IN SY. NO. 176 OF NAGARAM VILLAGE,  
 KEESARA MANDAL, RANGA REDDY DISTRICT.



06 SEP 2008



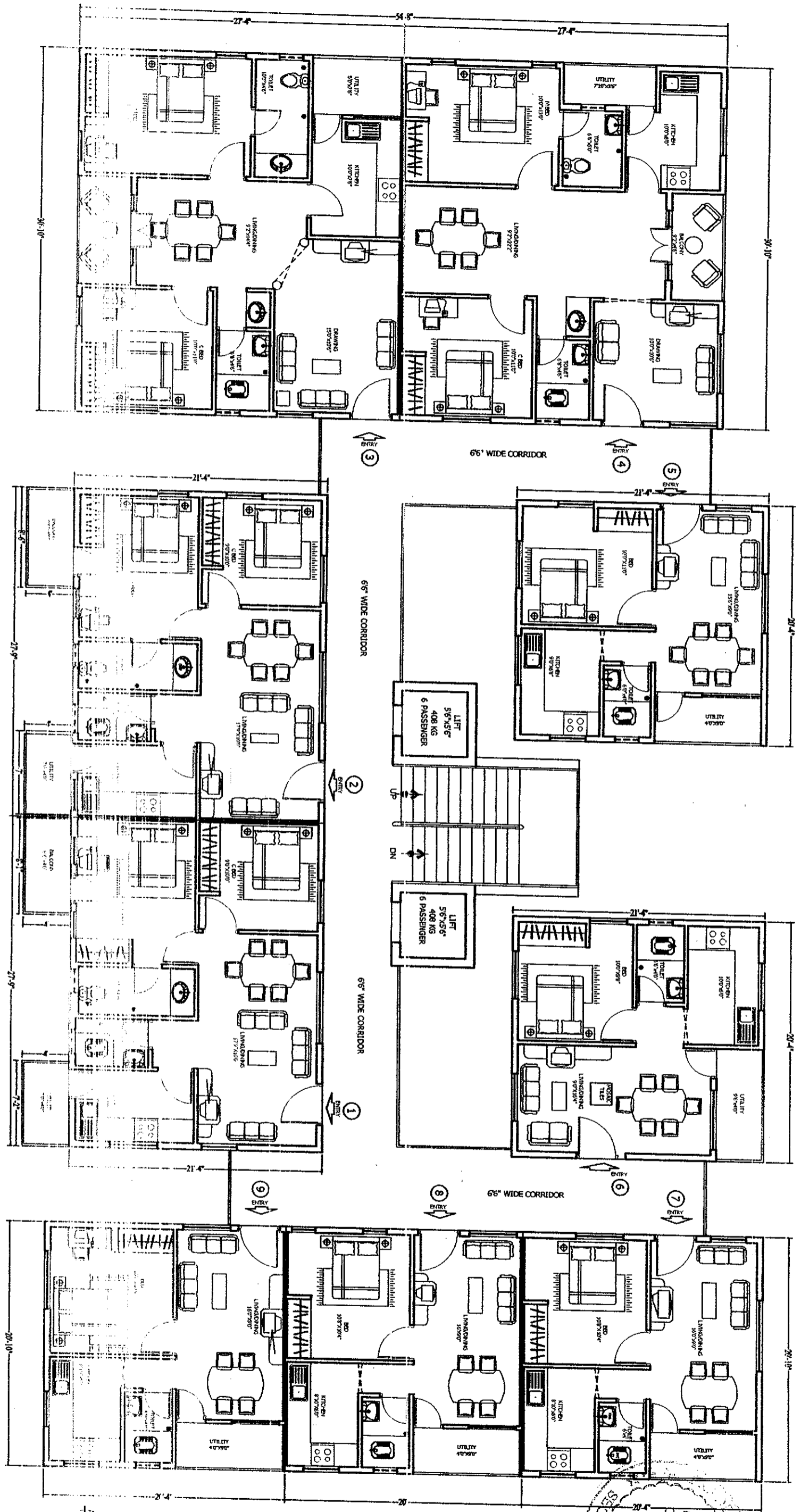
**BUILT UP AREA CALCULATIONS OF TYPICAL FLOOR PLAN OF BLOCK-2C OF PARAMOUNT BUILDER'S  
IN SY.NO.176 OF NAGARAM VILLAGE,KEESARA MANDAL,RANGA REDDY DISTRICT.**

S.No.	Flat no.s	Length-ft	Width-ft	Area-sft (A)	Bal Length-ft	Bal width-ft	Balcony Area-sft(B)	Built Up Area=(A+B)	Common Area-sft (C)	Super Built Up Area-sft=(A+B+C)
1	1&2	21.33	27.75	591.91	4.00	15.66	62.64	654.55	165.45	820.00
2	3 & 4	27.33	30.83	842.58	0.00	0.00	0.00	842.58	207.42	1050.00
3	5 & 6	21.33	20.33	433.64	0.00	0.00	0.00	433.64	96.36	530.00
4	7 & 9	20.33	20.83	423.47	0.00	0.00	0.00	423.47	106.53	530.00
5	8	20	20.83	416.60	0.00	0.00	0.00	416.60	113.40	530.00

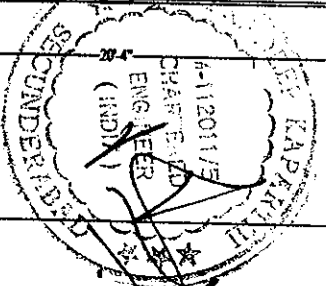


06 SEP 2008

PLAN SHOWING THE TYPICAL FLOOR PLAN OF BLOCK-2C OF  
 PARAMOUNT BUILDERS IN SY. NO. 176 OF NAGARAM VILLAGE,  
 KEESARA MANDAL, RANGA REDDY DISTRICT.

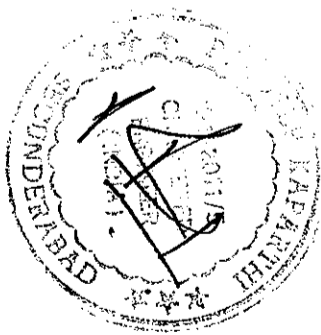


9 5 SFP 2008



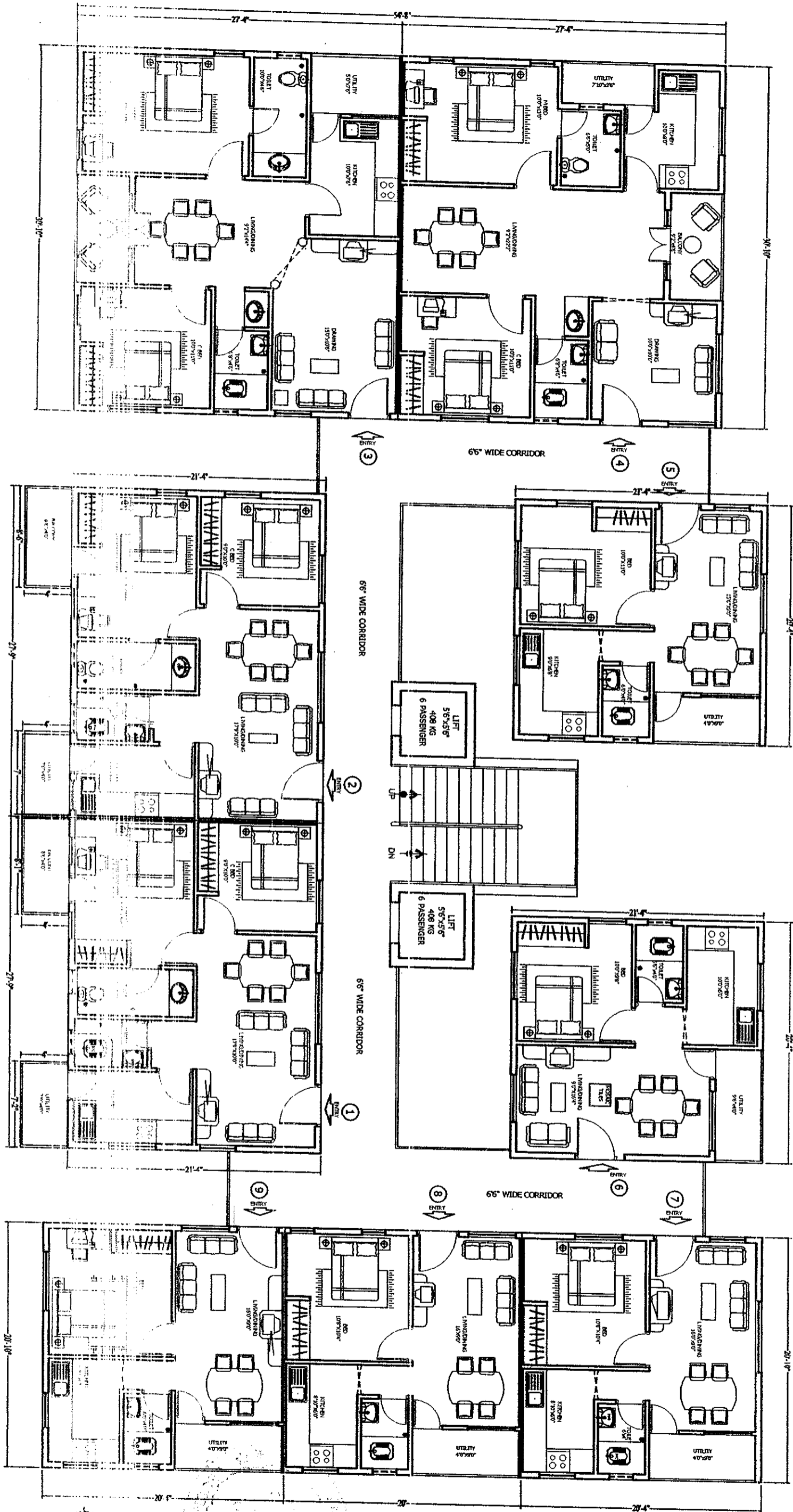


BUILT UP AREA CALCULATIONS OF TYPICAL FLOOR PLAN OF BLOCK-3C OF PARAMOUNT BUILDER'S										
IN SY.NO.176 OF NAGARAM VILLAGE,KEESARA MANDAL,RANGA REDDY DISTRICT.										
S.No.	Flat no.s	Length-ft	Width-ft	Area-sft (A)	Bal.Length-ft	Bal.width-ft	Balcony Area-sft(B)	Built Up Area=(A+B)	Common Area-sft (C)	Super Built Up Area-sft=(A+B+C)
1	1&2	21.33	27.75	591.91	4.00	15.66	62.64	654.55	165.45	820.00
2	3 & 4	27.33	30.83	842.58	0.00	0.00	0.00	842.58	207.42	1050.00
3	5 & 6	21.33	20.33	433.64	0.00	0.00	0.00	433.64	96.36	530.00
4	7 & 9	20.33	20.83	423.47	0.00	0.00	0.00	423.47	106.53	530.00
5	8	20	20.83	416.60	0.00	0.00	0.00	416.60	113.40	530.00

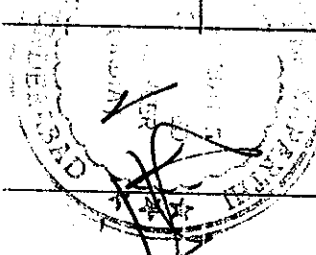


APPROVED BY  
 06 SEP 2008

PLAN SHOWING THE TYPICAL FLOOR PLAN OF BLOCK-3C OF  
 PARAMOUNT BUILDERS IN SY. NO. 176 OF NAGARAM VILLAGE,  
 KEESARA MANDAL, RANGA REDDY DISTRICT.



15 SEP 2008



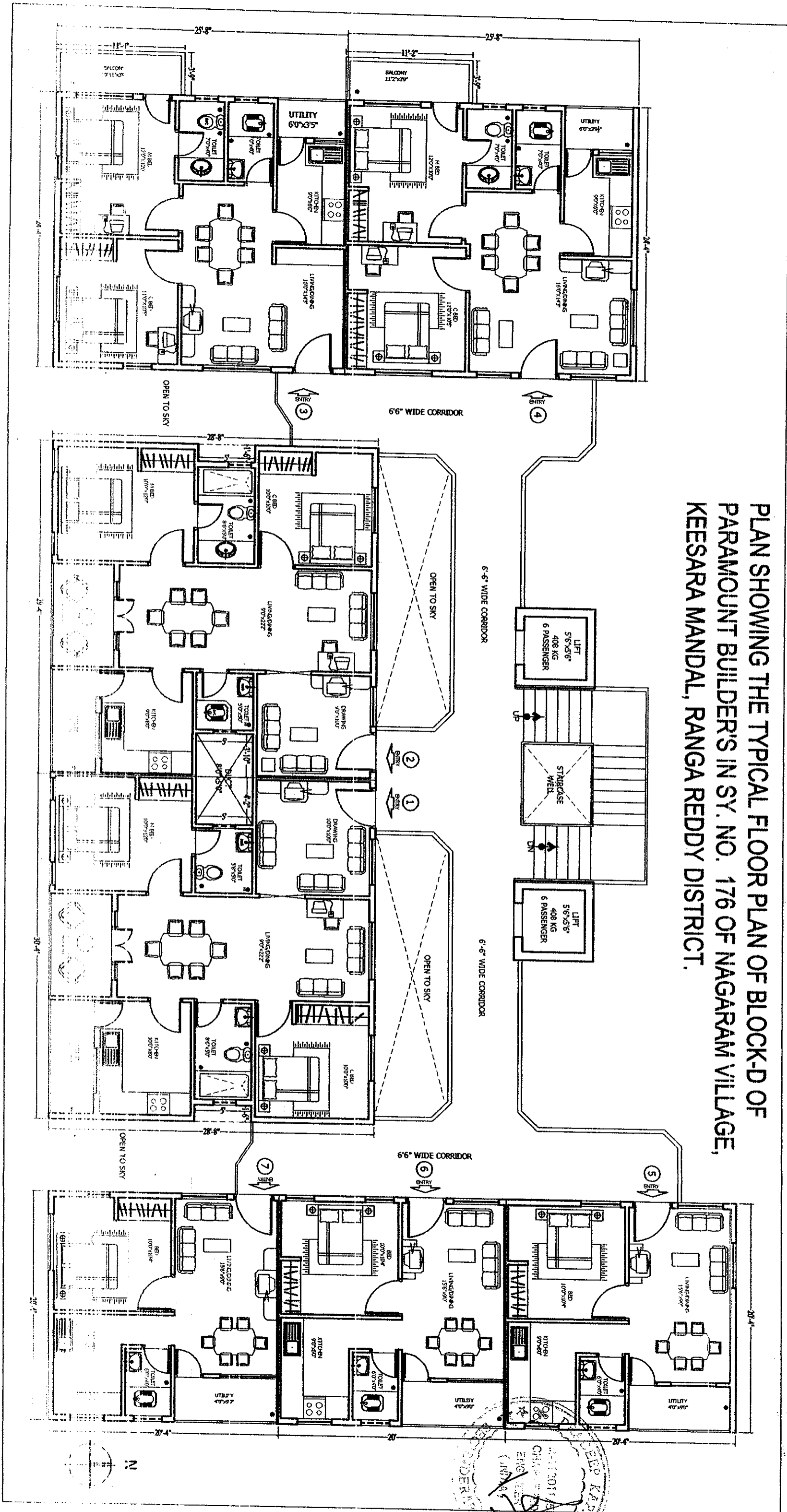
**BUILT UP AREA CALCULATIONS OF TYPICAL FLOOR PLAN OF BLOCK-D OF PARAMOUNT BUILDER'S  
IN SY. NO. 176 OF NAGARAM VILLAGE, KEESARA MANDAL, RANGA REDDY DISTRICT.**

S.No.	Flat no. s	Length-ft	Width-ft	Area-sft (A)	Bal. Length-ft	Bal width-ft	Balcony Area-sft(B)	Duct length	Duct width	Duct area (C)	Built Up Area=(A+B-C)	C.Area-sft (D)	Super Built Up Area-sft=(A+B-C)+D
1	1	28.66	30.33	869.26	0.00	0.00	0.00	5.00	4.16	20.80	848.46	201.54	1050.00
2	2	28.66	29.33	840.60	0.00	0.00	0.00	5.00	3.83	19.15	821.45	203.55	1025.00
3	3 & 4	25.66	24.33	624.31	11.33	3.75	42.49	0.00	0.00	0.00	666.80	163.20	830.00
4	5 & 7	20.33	20.33	413.31	0.00	0.00	0.00	0.00	0.00	0.00	413.31	101.69	515.00
5	6	20	20.33	406.60	0.00	0.00	0.00	0.00	0.00	0.00	406.60	108.40	515.00



RECEIVED  
18 SEP 2008

PLAN SHOWING THE TYPICAL FLOOR PLAN OF BLOCK-D OF  
 PARAMOUNT BUILDER'S IN SY. NO. 176 OF NAGARAM VILLAGE,  
 KEESARA MANDAL, RANGA REDDY DISTRICT.



05 SEP 2008