

**GENERAL NOTES**

1. USE M25 GRADE OF CONCRETE FOR COLUMNS, FOOTINGS, BEAMS & SLABS. (RATIO AS PER DESIGN MIX).
2. USE FE 500 GRADE TOR STEEL.
3. USE FE 500 GRADE TOR STEEL.
4. FOOTING IS DESIGN FOR GROUND & THREE FLOORS.
5. S.B.C OF THE soil is taken as per soil report 300 kN/m<sup>2</sup>sq
6. USE FE 500 GRADE TOR STEEL.
7. PROVIDE CLEAR COVER TO STEEL 40mm FOR COLUMNS, 50mm FOR FOOTINGS, 25mm BEAMS AND 20mm FOR SLABS.
8. PROVIDE 25MM CAMBER AT FREE END FOR CANTILEVER BEAMS & SLABS.
9. IN SLAB EXTEND -VE STEEL UP TO 0.30L FROM FACE OF SUPPORT.
10. DO NOT PROVIDE EXTRA REINFORCEMENT AT SIMPLE SUPPORTS.
11. LAP LENGTH 48 D (D- IS THE DIA OF THE BAR) IN COMPRESSION.
12. LAP LENGTH 52 D (D- IS THE DIA OF THE BAR) IN TENSION.
13. DESIGNED FOR ZONE-II EARTHQUAKE LOADS AS PER IS 1893 -2002 & WIND LOADS AS PER IS 875 PART-3.
14. ALL THE DIMENSIONS ARE IN MILLIMETERS.

CLUB HOUSE PLAN IN THE PROPOSED GATED COMMUNITY LAYOUT CUM GROUP HOUSING LAYOUT IN SY. NOS 11,12,14 TO 18 & 294 (PART) SITUATED AT CHERLAPALLY VILLAGE, GHMC KAPPA CIRCLE, GHATKESAR MANDAL, R.R DIST.

**BELONGING TO:**  
M/S SILVER OAK REALTY (FORMERLY KNOWN AS M/S. MEHTA & MODI HOMES) REPRESENTED BY ITS MANAGING PARTNER

SRI. SOHAM MODI, S/O SRI. SATISH MODI

CLUB HOUSE

TYPICAL FLOOR SLAB DETAILS

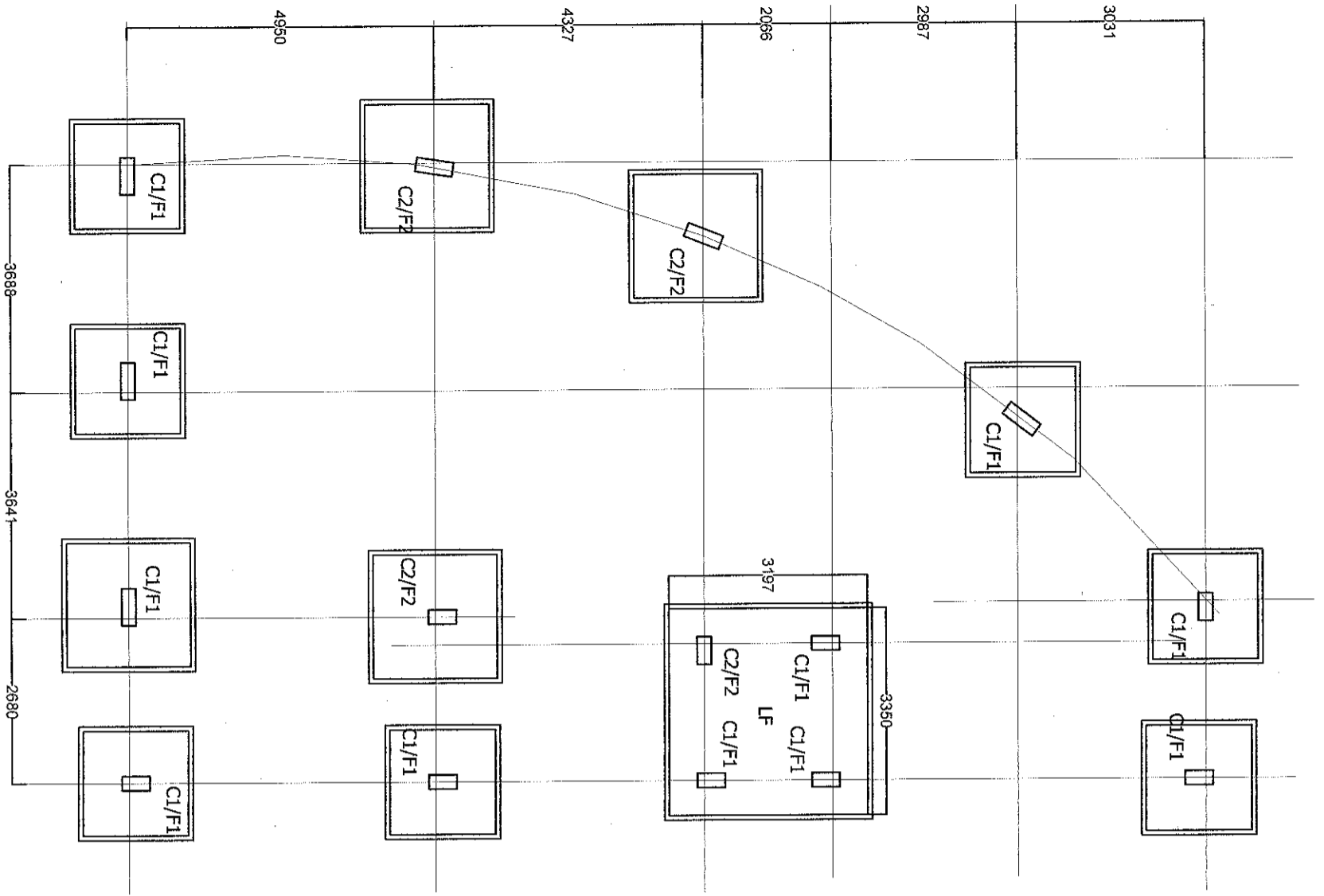
NORTH  
N



Structural Engineer's Signature :

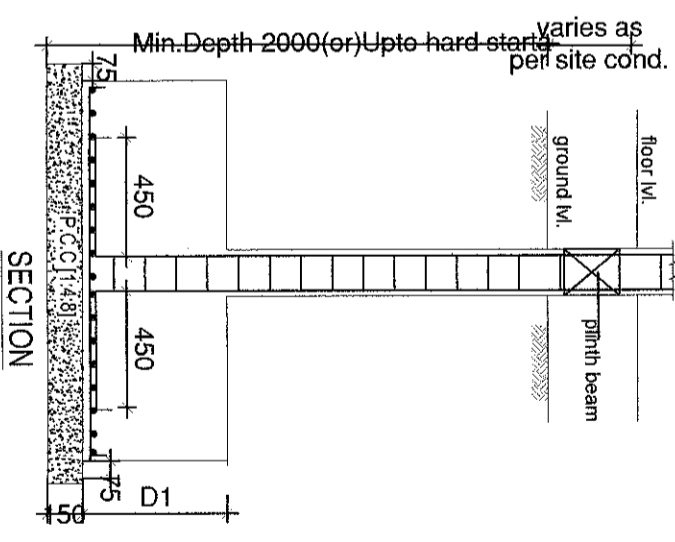
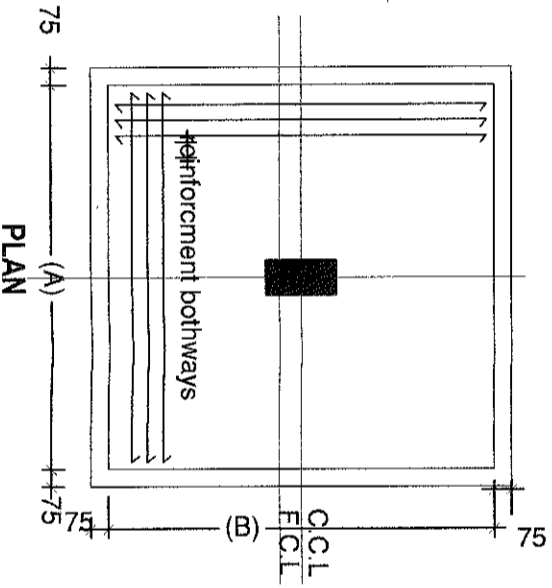
*M. Dattatri*  
**M. DATTATRI**  
STRUCTURAL ENGINEER

M. Dattatri RABCC. Ls. No.: 134  
GHMC License No. 134



COLUMN SECTION DETAILS				
TYPE	MIX	COLUMN SIZE	SECTION	REINFORCEMENT
C1	M25	230X450		#8nos-200 80@200 c/c 2-ties
C2	M25	300X600		#12nos-200 80@200 c/c 2-ties

FOOTING DETAILS					
Sno	FOOT SIZE	A	B	D1	REINFORCEMENT
1	F 1	1700	1700	525	120@150c/c bothways
2	F 2	2000	2000	600	120@125c/c bothways
2	LF	3400	3400	750	160@125c/c bothways top & bottom



**GENERAL NOTES**

1. USE M25 GRADE OF CONCRETE FOR COLUMNS, FOOTINGS, BEAMS & SLABS. (RATIO AS PER DESIGN MIX).
2. USE FE 500 GRADE TOR STEEL.
3. USE FE 500 GRADE TOR STEEL.
4. FOOTING IS DESIGN FOR GROUND & FIRST FLOOR.
5. S.B.C OF the soil is taken as per soil report. 300 kN/m<sup>2</sup>sq
6. USE FE 500 GRADE TOR STEEL.
7. PROVIDE CLEAR COVER TO STEEL. 40mm FOR COLUMNS, 50mm FOR FOOTINGS, 25mm BEAMS AND 20mm FOR SLABS.
8. PROVIDE 25MM CAMBER AT FREE END FOR CANTILEVER BEAMS & SLABS.
9. IN SLAB EXTEND -VE STEEL UPTO 0.30L FROM FACE OF SUPPORT.
10. DO NOT PROVIDE EXTRA REINFORCEMENT AT SIMPLE SUPPORTS.
11. LAP LENGTH 48 D (D- IS THE DIA OF THE BAR) INCOMPRESSION.
12. LAP LENGTH 52 D (D- IS THE DIA OF THE BAR) IN TENSION.
13. DESIGNED FOR ZONE-II EARTHQUAKE LOADS AS PER IS 1893 -2002 & WIND LOADS AS PER IS 875 PART-3.
14. ALL THE DIMENSIONS ARE IN MILLIMETRES.

CLUB HOUSE PLAN IN THE PROPOSED GATED COMMUNITY LAYOUT CUM GROUP HOUSING LAYOUT IN SY. NOS 11, 12, 14 TO 18 & 294 (PART) SITUATED AT CHERLAPALLY VILLAGE, GHMC KAPRA CIRCLE, GHATKESAR MANDAL, R.R DIST.

**BELONGING TO:**  
M/S SILVER OAK REALTY (FORMERLY KNOWN AS M/S. MEHTA & MODI HOMES) REPRESENTED BY ITS MANAGING PARTNER

**SRI. SOHAM MODI, S/O SRI. SATISH MODI**

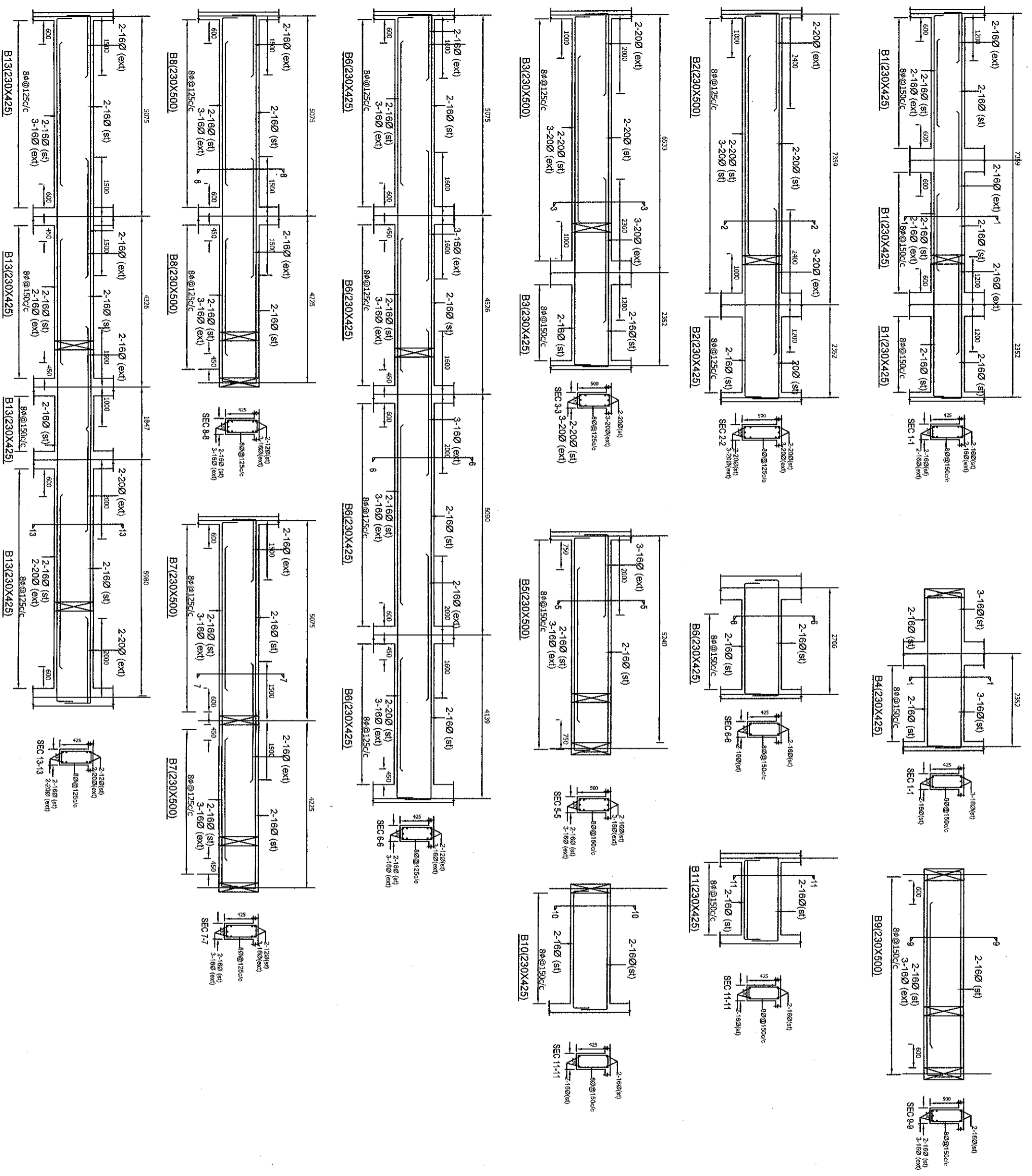
CLUB HOUSE

COLUMN & FOOTING SECTION DETAILS

NORTH

Structural Engineer's Signature :

**M. DATTATRI REDDY**  
STRUCTURAL ENGINEER  
GHMC License No: 134



**GENERAL NOTES**

1. USE M25 GRADE OF CONCRETE FOR COLUMNS, FOOTINGS, BEAMS & SLABS. (RATIO AS PER DESIGN MIX).
2. USE FE 500 GRADE FOR STEEL.
3. USE FE 500 GRADE FOR GROUND & THREE FLOORS.
4. FOOTING IS DESIGN FOR GROUND & THREE FLOORS.
5. S.B.C OF the soil is taken as per soil report 300 kn/m<sup>2</sup>sq
6. USE FE 500 GRADE FOR STEEL.
7. PROVIDE CLEAR COVER TO STEEL 40mm FOR COLUMNS, 50mm FOR FOOTINGS, 25mm FOR BEAMS AND 20mm FOR SLABS.
8. PROVIDE 25MM CAMBER AT FREE END FOR CANTILEVER BEAMS & SLABS.
9. IN SLAB EXTEND -VE STEEL UP TO 0.30L FROM FACE OF SUPPORT.
10. DO NOT PROVIDE EXTRA REINFORCEMENT AT SIMPLE SUPPORTS.
11. LAP LENGTH 48 D (D-IS THE DIA OF THE BAR) IN COMPRESSION.
12. LAP LENGTH 52 D (D-IS THE DIA OF THE BAR) IN TENSION.
13. DESIGNED FOR ZONE-II EARTHQUAKE LOADS AS PER IS 1893 -2002 & WIND LOADS AS PER IS 875 PART-3.
14. ALL THE DIMENSIONS ARE IN MILLIMETRES.

CLUB HOUSE PLAN IN THE PROPOSED GATED COMMUNITY LAYOUT CUM GROUP HOUSING LAYOUT IN SY. NOS 11, 12, 14 TO 18 & 294 (PART) SITUATED AT CHERLAPALLY VILLAGE, GHMC KAPPA CIRCLE, GHATKESAR MANDAL, R.R DIST. BELONGING TO: M/S. SILVER OAK REALTY (FORMERLY KNOWN AS M/S. MEHTA & MODI HOMES) REPRESENTED BY ITS MANAGING PARTNER

SRI. SOHAM MODI, S/O SRI. SATISH MODI

CLUB HOUSE

TYPICAL FLOOR BEAM SECTION DETAILS

NORTH

Structural Engineer's Signature :

M. DATATRI RAO  
 STRUCTURAL ENGINEER  
 GHMC License No. 1945, Lr. No. 134