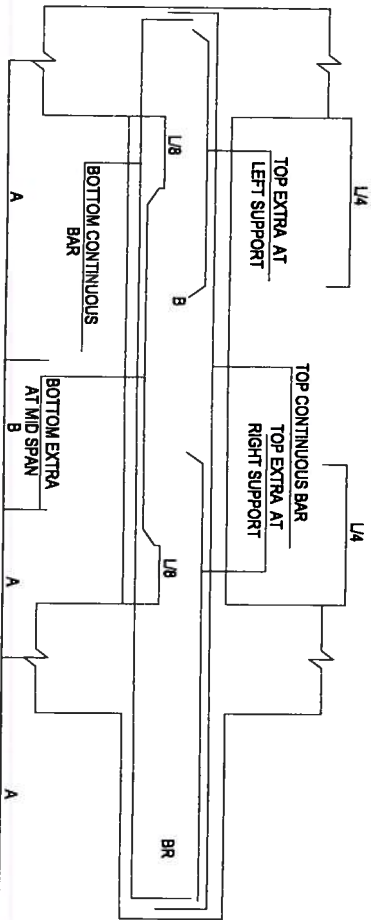


BEAM REINFORCEMENT DETAILS

BEAM No.	BEAM SIZE	TOP CONTINUOUS BARS	BOTTOM CONTINUOUS BARS	TOP EXTRA AT LEFT SUPPORT	TOP EXTRA AT RIGHT SUPPORT	BOTTOM EXTRA AT MID SPAN	SIDE REINFORCEMENT	STIRRUPS AT 'A'	STIRRUPS AT 'B'
B1	230 x 450	2Nos. 16T or	2Nos. 16T or	---	---	---	---	8T or 150c/c	8T or 150c/c
B2	230 x 450	2Nos. 16T or	2Nos. 16T or	1No. 16T or	1No. 16T or	1No. 16T or	---	8T or 150c/c	8T or 230c/c
B3	230 x 450	2Nos. 12T or	2Nos. 12T or	2Nos. 16T or	2Nos. 16T or	2Nos. 16T or	---	8T or 150c/c	8T or 230c/c
B4	230 x 450	2Nos. 12T or	2Nos. 12T or	2Nos. 12T or	2Nos. 12T or	2Nos. 12T or	---	8T or 150c/c	8T or 230c/c
B5	230 x 450	2Nos. 16T or	2Nos. 16T or	2Nos. 20T or	2Nos. 20T or	2Nos. 20T or	---	8T or 150c/c	8T or 230c/c
B6	230 x 450	2Nos. 16T or	2Nos. 16T or	1No. 16T or	1No. 16T or	1No. 16T or	---	8T or 150c/c	8T or 230c/c
B7	230 x 600	2Nos. 16T or	2Nos. 16T or	2Nos. 20T or	2Nos. 20T or	2Nos. 20T or	---	8T or 150c/c	8T or 230c/c
B8	230 x 600	2Nos. 20T or 2Nos. 20T or	2Nos. 20T or 2Nos. 20T or	---	---	---	---	8T or 150c/c	8T or 150c/c
B9	230 x 600	2Nos. 25T or	2Nos. 25T or	2Nos. 25T or	2Nos. 25T or	2Nos. 25T or	---	10T or 150c/c	10T or 150c/c
B10	230 x 600	2Nos. 20T or 2Nos. 20T or	2Nos. 20T or 2Nos. 20T or	---	---	---	---	8T or 150c/c	8T or 150c/c
B11	230 x 600	2Nos. 16T or	2Nos. 16T or	2Nos. 20T or	2Nos. 20T or	2Nos. 20T or	---	8T or 150c/c	8T or 230c/c
B12	230 x 450	2Nos. 16T or	2Nos. 16T or	1No. 16T or	1No. 16T or	1No. 16T or	---	8T or 150c/c	8T or 230c/c

SLAB REINFORCEMENT DETAILS

SLAB No.	SLAB THICKNESS MM	ALONG SHORT SPAN		ALONG LONG SPAN		REMARKS
		TOP AT SUPPORTS	BOTTOM AT MIDSPAN	TOP AT SUPPORTS	BOTTOM AT MIDSPAN	
S1	125	10T or 150c/c	10T or 150c/c	10T or 150c/c	10T or 150c/c	Two - Way
S2	100	10T or 150c/c	10T or 150c/c	10T or 230c/c	10T or 230c/c	Two - Way
S3	125	12T or 150c/c	12T or 150c/c	12T or 150c/c	12T or 150c/c	Two - Way
S4	125	10T or 150c/c	10T or 150c/c	10T or 200c/c	10T or 200c/c	Two - Way



PROJECT :
 PLAN SHOWING THE PROPOSED GROUP HOUSING SCHEME IN SY. NO. 19 OF MALLAPUR VILLAGE, GHINC KAPPA CIRCLE, UPPAL MANDAL, MEDCHAL DISTRICT.

BELONGING TO:
 M/s. GULMOHAR RESIDENCY & JADE ESTATES.

DEVELOPERS:
 M/s. MODI ESTATES REPRESENTED BY ITS MANAGING PARTNER SHRI. SOHAM MODI AND PARAMOUNT AVENUES PVT LTD. REPRESENTED BY ITS DIRECTOR SHRI GAURANG MODI.

TITLE :
 TYPICAL SLAB & BEAM DETAILS (CLUB HOUSE)

- NOTES :**
- CRANKING OF BARS SHOULD BE DONE @ 1/4 TH OF THE SPAN @ AN ANGLE OF 45°.
 - MIX SHALL BE M20 (1:1:2:3) WITH W/C RATIO 0.40.
 - COVERING FOR MAIN REINFORCEMENT SHALL BE 20mm FOR SLABS & 25mm FOR BEAMS.
 - CURING SHALL BE DONE FOR 21 DAYS.

DATE	REVISIONS	DATE	REVISIONS
26-10-2017	1		

ARCHITECT : ZAKI AMMER, CONSULTING ENGINEER

DATE : 26-10-2017

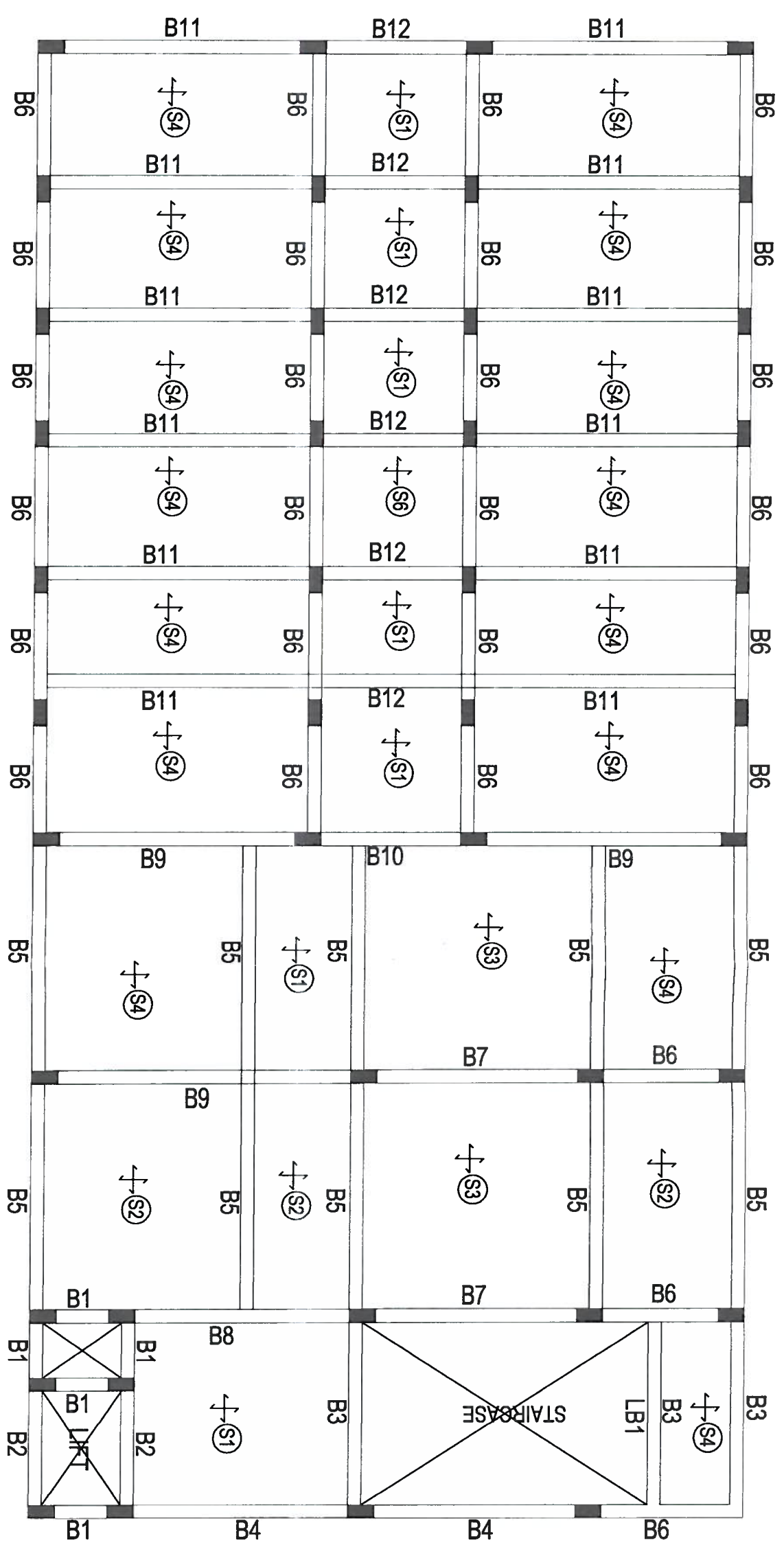
DEALT : VINITHA

DRAWN : SAHERA

CHECKED : VINITHA

ZAKI & ASSOCIATES
 STRUCTURAL ENGINEERS
 4th Floor, Kalyan Commercial Complex,
 Basile Road, (Opp. St. Mary's College),
 Hyderabad - 500002. Ph: 23224172, 23224173
 Email: zaki@zakiandassociates.com

Z-ST/23



PROJECT :
 PLAN SHOWING THE PROPOSED GROUP
 HOUSING SCHEME IN SY NO. 19 OF MALLAPUR
 VILLAGE, GHANC KAPPA CIRCLE, UPPAL
 MANDAL, MEDCHAL DISTRICT.

BE LONGING TO:
 M/s. GULMOHAR RESIDENCY & JADE ESTATES
 DEVELOPERS.
 M/s. MODI ESTATES REPRESENTED BY ITS
 MANAGING PARTNER SHRI. SOHAM MODI
 AND PARAMOUNT AVENUES PVT LTD.
 REPRESENTED BY ITS DIRECTOR SHRI
 GAURANG MODI.

TITLE :
 TYPICAL SLAB & BEAM DETAILS (CLUB HOUSE)

NOTES :

- ① CHAMFERING OF SLABS SHOULD BE DONE @ 1/4 TH OF THE SPAN @ AN ANGLE OF 45°.
- ② MIX SHALL BE M20 (1:1:2) WITH W/C RATIO 0.40.
- ③ COVERING FOR MAIN REINFORCEMENT SHALL BE 20mm FOR SLABS & 25mm FOR BEAMS.
- ④ CURING SHALL BE DONE FOR 21 DAYS.

DATE	REVISIONS	DATE	REVISIONS	DATE	REVISIONS

DESIGNED BY : ZAKI AHMED
CHECKED BY : VINITHA

DATE : 23/11/22

SCALE : 1:100

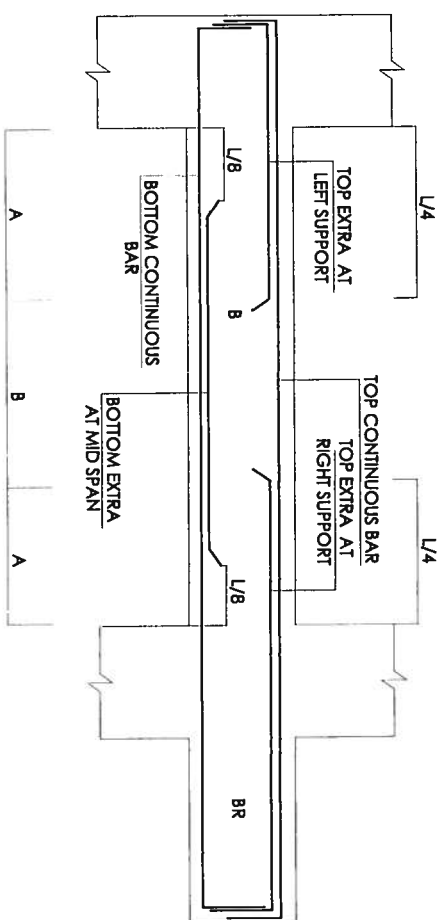
PROJECT : ZAKI AHMED
 CONSULTING ENGINEER

TYPICAL SLAB REINFORCEMENT DETAILS

SLAB No.	SLAB THICKNESS MM	ALONG SHORT SPAN		ALONG LONG SPAN		REMARKS
		TOP AT SUPPORTS	BOTTOM AT MIDSPAN	TOP AT SUPPORTS	BOTTOM AT MIDSPAN	
S1	125	8T or 150c/c	8T or 150c/c	8T or 150c/c	8T or 150c/c	Two - Way
S2	100	8T or 150c/c	8T or 150c/c	8T or 230c/c	8T or 230c/c	One - Way
S3	125	10T or 150c/c	10T or 150c/c	10T or 230c/c	10T or 230c/c	Two - Way
S4	125	8T or 150c/c	8T or 150c/c	8T or 230c/c	8T or 230c/c	Two - Way
S5	125	8T or 150c/c	8T or 150c/c	8T or 230c/c	8T or 230c/c	Two - Way
S6	125	10T or 150c/c	10T or 150c/c	8T or 230c/c	8T or 230c/c	One - Way
S7	125	10T or 150c/c	10T or 150c/c	8T or 150c/c	8T or 150c/c	Two - Way
S8	125	10T or 100c/c	10T or 100c/c	10T or 200c/c	10T or 200c/c	Two - Way

(TYPICAL SLAB BEAM DETAILS)

BEAM No.	BEAM SIZE	TOP CONTINUOUS BARS		BOTTOM CONTINUOUS BARS		TOP EXTRA AT LEFT SUPPORT		TOP EXTRA AT RIGHT SUPPORT		BOTTOM EXTRA AT MID SPAN		SIDE REINFORCEMENT	STIRRUPS AT 'A'	STIRRUPS AT 'B'
		2nos. 12tor	2nos. 16tor	2nos. 12tor	2nos. 16tor	2nos. 20tor	1no. 16tor	2nos. 25tor	2nos. 25tor	2nos. 12tor	2nos. 16tor			
B1	230 x 450	2nos. 12tor	2nos. 16tor	2nos. 12tor	2nos. 16tor	2nos. 20tor	1no. 16tor	2nos. 25tor	2nos. 25tor	2nos. 12tor	2nos. 16tor	8tor 150c/c	8tor 230c/c	
B2	230 x 450	2nos. 16tor	2nos. 16tor	2nos. 16tor	2nos. 16tor	2nos. 20tor	2nos. 20tor	2nos. 20tor	2nos. 20tor	2nos. 20tor	2nos. 20tor	8tor 150c/c	8tor 230c/c	
B3	230 x 450	2nos. 16tor	2nos. 16tor	2nos. 20tor	2nos. 20tor	2nos. 20tor	1no. 16tor	2nos. 20tor	2nos. 20tor	2nos. 20tor	1no. 16tor	8tor 150c/c	8tor 230c/c	
B4	230 x 600	2nos. 20tor	2nos. 20tor	2nos. 20tor	2nos. 20tor	2nos. 25tor	2nos. 25tor	2nos. 25tor	2nos. 25tor	2nos. 25tor	2nos. 25tor	10tor 150c/c	10tor 150c/c	
B5	230 x 600	2nos. 20tor	2nos. 20tor	2nos. 20tor	2nos. 20tor	2nos. 25tor	2nos. 25tor	2nos. 25tor	2nos. 25tor	2nos. 25tor	2nos. 25tor	10tor 150c/c	10tor 230c/c	
B6	230 x 450	2nos. 16tor	2nos. 16tor	2nos. 16tor	2nos. 16tor	2nos. 16tor	2nos. 16tor	2nos. 16tor	2nos. 16tor	2nos. 16tor	2nos. 16tor	8tor 150c/c	8tor 230c/c	
B7	230 x 450	2nos. 16tor	2nos. 16tor	2nos. 16tor	2nos. 16tor	2nos. 16tor	2nos. 16tor	2nos. 16tor	2nos. 16tor	2nos. 16tor	2nos. 16tor	8tor 150c/c	8tor 150c/c	
B8	230 x 450	2nos. 12tor	2nos. 12tor	2nos. 12tor	2nos. 12tor	2nos. 12tor	2nos. 12tor	2nos. 12tor	2nos. 12tor	2nos. 12tor	2nos. 12tor	8tor 150c/c	8tor 230c/c	
B9	230 x 450	2nos. 12tor	2nos. 12tor	2nos. 12tor	2nos. 12tor	2nos. 16tor	2nos. 16tor	2nos. 16tor	2nos. 16tor	2nos. 16tor	2nos. 16tor	8tor 150c/c	8tor 230c/c	
B10	230 x 450	2nos. 12tor	2nos. 12tor	2nos. 12tor	2nos. 12tor	2nos. 12tor	2nos. 12tor	2nos. 12tor	2nos. 12tor	2nos. 12tor	2nos. 12tor	8tor 150c/c	8tor 150c/c	
B11	230 x 450	2nos. 12tor	2nos. 12tor	2nos. 12tor	2nos. 12tor	2nos. 16tor	2nos. 16tor	2nos. 16tor	2nos. 16tor	2nos. 16tor	2nos. 16tor	8tor 150c/c	8tor 230c/c	
B12	230 x 600	2nos. 25tor	2nos. 25tor	2nos. 25tor	2nos. 25tor	2nos. 25tor	2nos. 25tor	2nos. 25tor	2nos. 25tor	2nos. 25tor	2nos. 25tor	10tor 150c/c	10tor 230c/c	
B13	230 x 600	2nos. 20tor	2nos. 20tor	2nos. 20tor	2nos. 20tor	2nos. 20tor	2nos. 20tor	2nos. 20tor	2nos. 20tor	2nos. 20tor	2nos. 20tor	8tor 150c/c	8tor 150c/c	
B14	230 x 450	2nos. 12tor	2nos. 12tor	2nos. 12tor	2nos. 12tor	2nos. 16tor	2nos. 16tor	2nos. 16tor	2nos. 16tor	2nos. 16tor	2nos. 16tor	8tor 150c/c	8tor 230c/c	
B15	230 x 600	2nos. 25tor	2nos. 25tor	2nos. 25tor	2nos. 25tor	2nos. 25tor	2nos. 25tor	2nos. 25tor	2nos. 25tor	2nos. 25tor	2nos. 25tor	10tor 150c/c	10tor 230c/c	
B16	230 x 600	2nos. 20tor	2nos. 20tor	2nos. 20tor	2nos. 20tor	2nos. 20tor	2nos. 20tor	2nos. 20tor	2nos. 20tor	2nos. 20tor	2nos. 20tor	8tor 150c/c	8tor 150c/c	



TYPICAL BEAM DETAIL

PROJECT :
 PLAN SHOWING THE PROPOSED GROUP HOUSING SCHEME IN SY.NO. 19 OF MALLAPUR VILLAGE, GHMC KAPPA CIRCLE, UPPAL MANDAL, MEDCHAL DISTRICT.

BELONGING TO:
 M/S. GULMOHAR RESIDENCY & JADE ESTATES.

DEVELOPERS:
 M/S. MODI ESTATES REPRESENTED BY ITS MANAGING PARTNER SHRI. SOHAM MODI AND PARAMOUNT AVENUES PVT LTD, REPRESENTED BY ITS DIRECTOR SHRI GAURANG MODI.

TITLE :
 TYPICAL SLAB BEAM DETAILS (BLOCK - G)

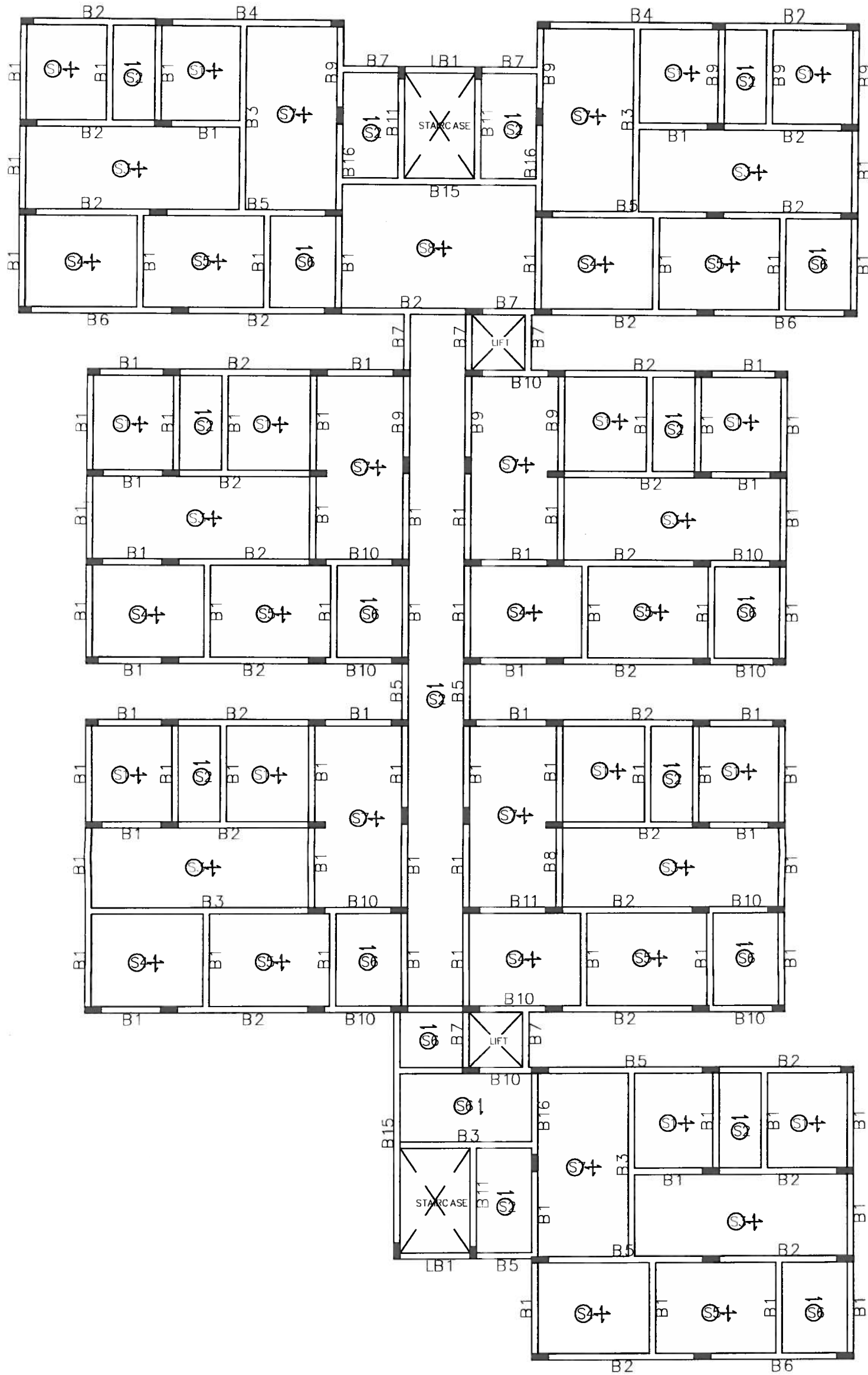
- NOTES :**
- CRANKING OF BARS SHOULD BE DONE @ 1/4 TH OF THE SPAN @ AN ANGLE OF 45°.
 - MIX SHALL BE M20 (1:1:2:3) WITH W/C RATIO 0.40.
 - COVERING FOR MAIN REINFORCEMENT SHALL BE 20mm FOR SLABS & 25mm FOR BEAMS.
 - CURING SHALL BE DONE FOR 21 DAYS.

DATE: 26-10-2017	REVISIONS:	DATE:	DEALT:	DRAWN:	CHECKED:
			MRS. VINITHA AMER HUSSAIN	MRS. VINITHA	

ZAKI & ASSOCIATES
 STRUCTURAL ENGINEERS,
 4th Floor, Anusuya Commercial Complex,
 Badda Ramayya Hospital, Himayyasaagar, Hyd.
 Ph: 28224772
 Email: zakiandassociates@gmail.com

ZAKI AMIN
 CONSULTING ENGINEER

ST/21 / A



PROJECT :
 PLAN SHOWING THE PROPOSED GROUP HOUSING SCHEME IN SY.NO. 19 OF MALLAPUR VILLAGE, GHMC KAPRA CIRCLE, UPPAL MANDAL, MEDCHAL DISTRICT.
 BELONGING TO:
 M/s. GULMOHAR RESIDENCY & JADE ESTATES.
 DEVELOPERS:
 M/s. MODI ESTATES REPRESENTED BY ITS MANAGING PARTNER SHRI. SOHAM MODI AND PARAMOUNT AVENUES PVT LTD. REPRESENTED BY ITS DIRECTOR SHRI GAURANG MODI.

TITLE :
 1ST SLAB BEAM FRAMING LAYOUT (BLOCK-G)

NOTES :

- ① CRANKING OF BARS SHOULD BE DONE @ 1/4 TH OF THE SPAN @ AN ANGLE OF 45°.
- ② MIX SHALL BE M20 (1:1½:3) WITH W/C RATIO 0.40.
- ③ COVERING FOR MAIN REINFORCEMENT SHALL BE 20mm FOR SLABS & 25mm FOR BEAMS.
- ④ CURING SHALL BE DONE FOR 21 DAYS.

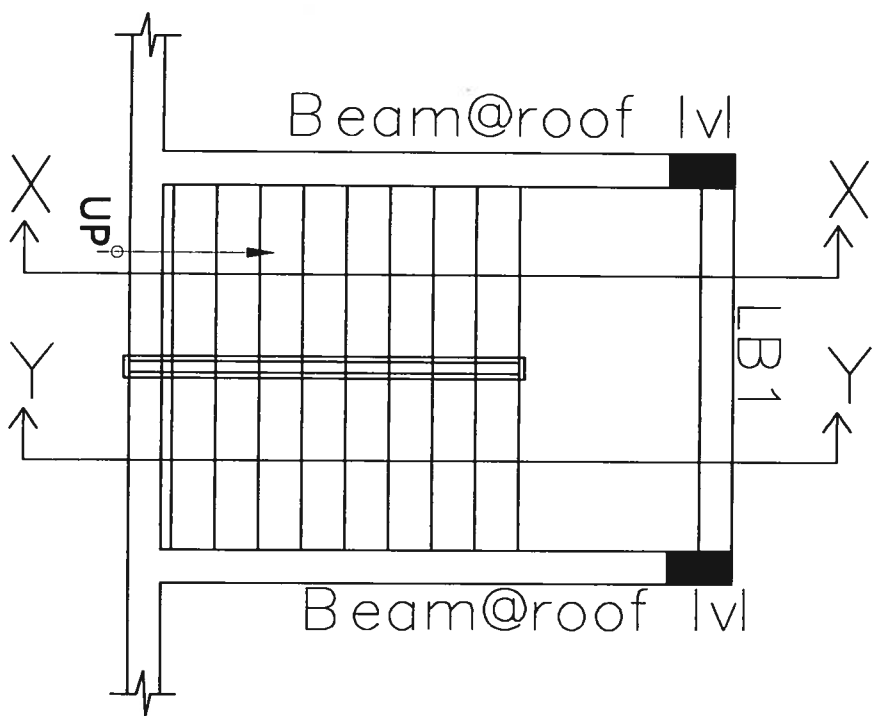
DATE	REVNO.	REVISIONS	DATE	DEALT	DRAWN	CHECKED
26-10-2017				MRS.VINITHA AMBR RUSSAIN		MRS.VINITHA

ARCHITECT :

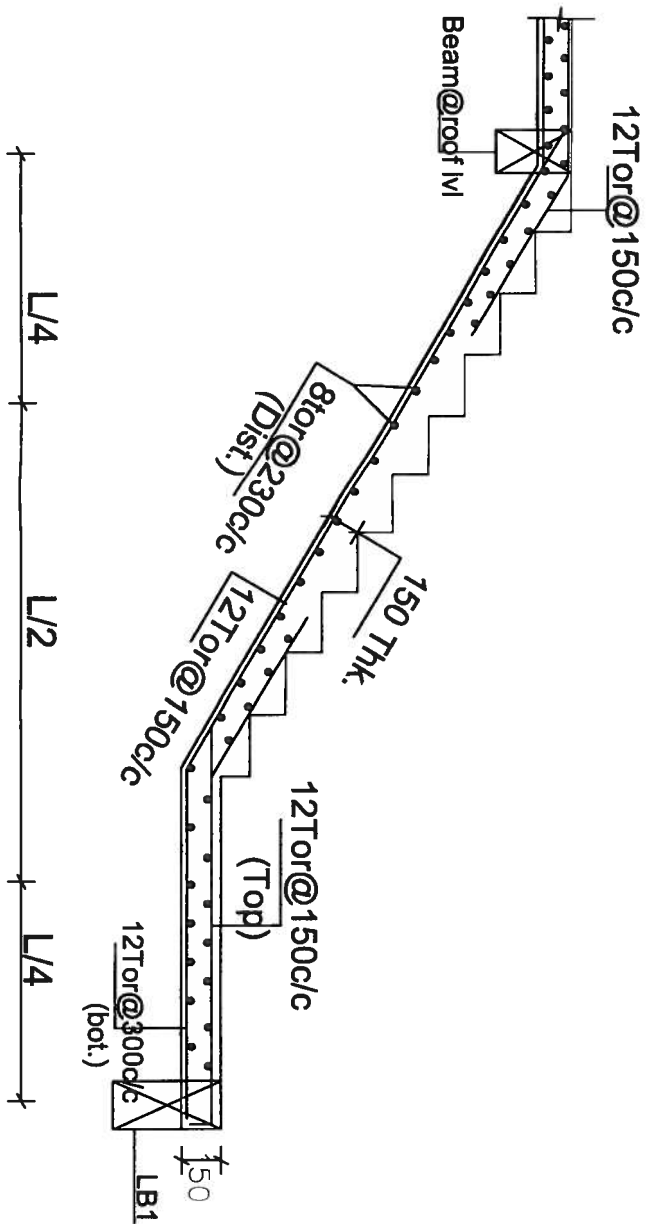
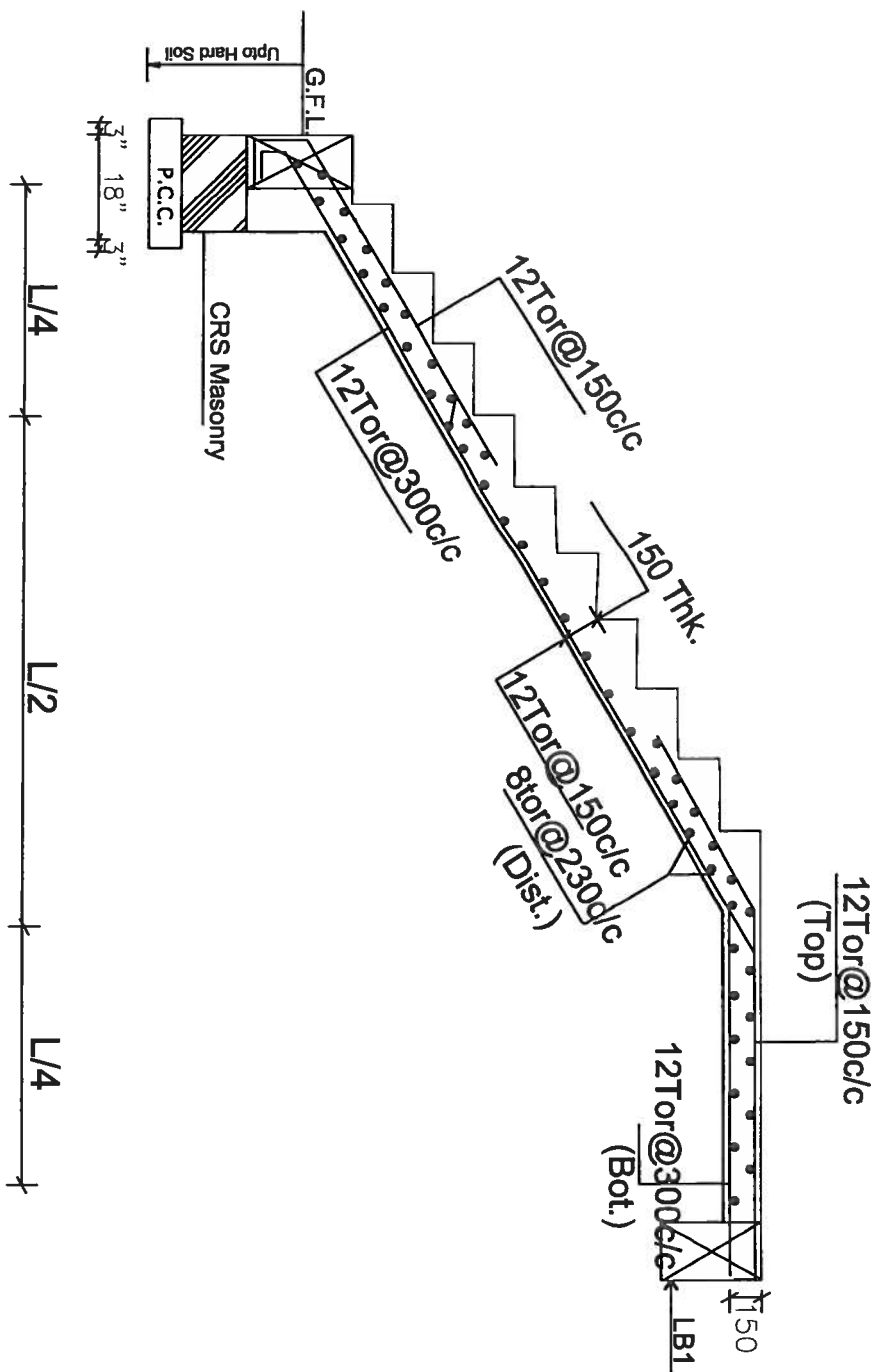
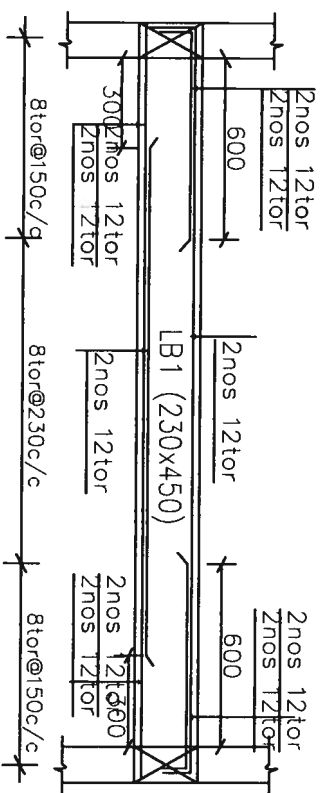
ZAKI & ASSOCIATES
 STRUCTURAL ENGINEERS
 4th Floor, All Saints Commercial Complex,
 Basile Roma Road, Hyderabad, India
 Tel: 2324772
 Email: zaki@zakiandassociates.com

ZAKI AHMED
 CONSULTING ENGINEER

ST/21



STAIRCASE PLAN



SECTION @ Y - Y

PROJECT :
 PLAN SHOWING THE PROPOSED GROUP HOUSING SCHEME IN SY.NO. 19 OF MALLAPUR VILLAGE, GHMC KAPRA CIRCLE, UPPAL MANDAL, MEDCHAL DISTRICT.
BELOGING TO:
 M/s. GULMOHAR RESIDENCY & JADE ESTATES.
DEVELOPERS:
 M/s. MODI ESTATES REPRESENTED BY ITS MANAGING PARTNER SHRI. SOHAM MODI AND PARAMOUNT AVENUES PVT LTD. REPRESENTED BY ITS DIRECTOR SHRI GAURANG MODI.
TITLE :
 STAIRCASE DETAILS (9.00K-5)

NOTES :
 1) SPACING OF BARS SHOULD BE DONE @ 1/4 TH OF THE SPAN @ AN ANGLE OF 45°.
 2) MIX SHALL BE M20 (1:1:2) WITH W/C RATIO 0.40.
 3) COVERING FOR MAIN REINFORCEMENT SHALL BE 20mm FOR SLABS & 25mm FOR BEAMS.
 4) CURING SHALL BE DONE FOR 21 DAYS.

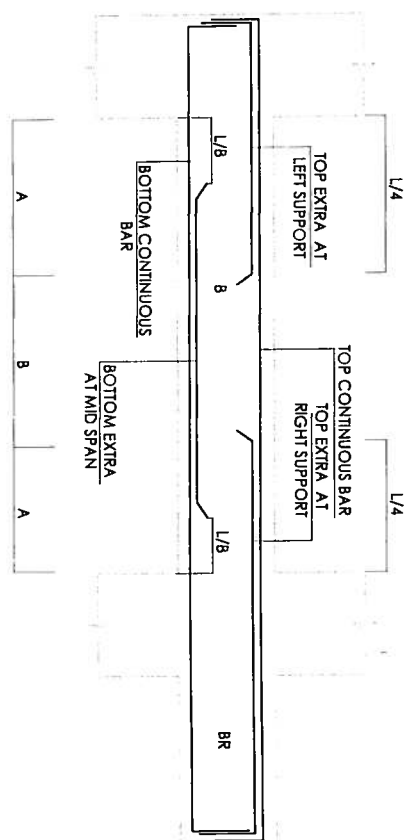
DATE : 26-10-2017	DRAWN : MRS. VINITA LAGER HUSSAIN	CHECKED : MRS. VINITA
SCALE : 1/4"	DESIGN : MRS. VINITA LAGER HUSSAIN	DATE : 26-10-2017
ZAKI & ASSOCIATES 41, SRIKANTH NAGAR, ENGINEER 4th Floor, SRIKANTH NAGAR, Hyderabad - 500017 Email: zakimod@gmail.com, zakimod@yahoo.com Phone: 9848344777, 9848344778		
ARCHITECT : ZAKI AHMED CONSULTING ENGINEER		ST/20

TYPICAL SLAB REINFORCEMENT DETAILS

SLAB No.	SLAB THICKNESS MM	ALONG SHORT SPAN		ALONG LONG SPAN		REMARKS
		TOP AT SUPPORTS	BOTTOM AT MIDSPAN	TOP AT SUPPORTS	BOTTOM AT MIDSPAN	
S1	125	8T or 150c/c	8T or 150c/c	8T or 150c/c	8T or 150c/c	Two - Way
S2	100	8T or 150c/c	8T or 150c/c	8T or 230c/c	8T or 230c/c	One - Way
S3	125	10T or 150c/c	10T or 150c/c	10T or 230c/c	10T or 230c/c	Two - Way
S4	125	8T or 150c/c	8T or 150c/c	8T or 230c/c	8T or 230c/c	Two - Way
S5	125	8T or 150c/c	8T or 150c/c	8T or 230c/c	8T or 230c/c	Two - Way
S6	125	10T or 150c/c	10T or 150c/c	8T or 230c/c	8T or 230c/c	One - Way
S7	125	10T or 150c/c	10T or 150c/c	8T or 150c/c	8T or 150c/c	Two - Way
S8	125	10T or 100c/c	10T or 100c/c	10T or 200c/c	10T or 200c/c	Two - Way

(TYPICAL SLAB BEAM DETAILS)

BEAM No.	BEAM SIZE	CONTINUOUS BARS		TOP EXTRA AT LEFT SUPPORT		TOP EXTRA AT RIGHT SUPPORT		BOTTOM EXTRA AT MID SPAN		SIDE REINFORCEMENT	STIRRUPS AT 'A'	STIRRUPS AT 'B'
		TOP CONTINUOUS BARS	BOTTOM CONTINUOUS BARS	TOP EXTRA AT LEFT SUPPORT	TOP EXTRA AT RIGHT SUPPORT	BOTTOM EXTRA AT MID SPAN	BOTTOM EXTRA AT MID SPAN					
B1	230 x 450	2nos. 12tor	2nos. 12tor	2nos. 12tor	2nos. 12tor	2nos. 12tor	2nos. 12tor	2nos. 25tor	2nos. 25tor	—	8tor 150c/c	8tor 230c/c
B2	230 x 450	2nos. 16tor	2nos. 16tor	2nos. 20tor	2nos. 20tor	2nos. 20tor	2nos. 20tor	2nos. 20tor	2nos. 20tor	—	8tor 150c/c	8tor 230c/c
B3	230 x 450	2nos. 16tor	2nos. 20tor	2nos. 20tor	2nos. 20tor	2nos. 20tor	2nos. 20tor	2nos. 20tor	2nos. 20tor	—	8tor 150c/c	8tor 230c/c
B4	230 x 600	2nos. 20tor	2nos. 20tor	2nos. 25tor	2nos. 25tor	2nos. 25tor	2nos. 25tor	2nos. 25tor	2nos. 25tor	—	10tor 150c/c	10tor 150c/c
B5	230 x 600	2nos. 20tor	2nos. 20tor	2nos. 25tor	2nos. 25tor	2nos. 25tor	2nos. 25tor	2nos. 25tor	2nos. 25tor	—	10tor 150c/c	10tor 230c/c
B6	230 x 450	2nos. 16tor	2nos. 16tor	2nos. 16tor	2nos. 16tor	2nos. 16tor	2nos. 16tor	2nos. 16tor	2nos. 16tor	—	8tor 150c/c	8tor 230c/c
B7	230 x 450	2nos. 16tor	2nos. 16tor	—	—	—	—	—	—	—	8tor 150c/c	8tor 150c/c
B8	230 x 450	2nos. 12tor	2nos. 12tor	2nos. 12tor	2nos. 12tor	2nos. 12tor	2nos. 12tor	2nos. 12tor	2nos. 12tor	—	8tor 150c/c	8tor 230c/c
B9	230 x 450	2nos. 12tor	2nos. 12tor	2nos. 16tor	2nos. 16tor	2nos. 16tor	2nos. 16tor	2nos. 16tor	2nos. 16tor	—	8tor 150c/c	8tor 230c/c
B10	230 x 450	2nos. 12tor	2nos. 12tor	—	—	—	—	—	—	—	8tor 150c/c	8tor 150c/c
B11	230 x 450	2nos. 12tor	2nos. 12tor	2nos. 16tor	2nos. 16tor	2nos. 16tor	2nos. 16tor	2nos. 16tor	2nos. 16tor	—	8tor 150c/c	8tor 230c/c
B12	230 x 600	2nos. 25tor	2nos. 25tor	2nos. 25tor	2nos. 25tor	2nos. 25tor	2nos. 25tor	2nos. 25tor	2nos. 25tor	—	10tor 150c/c	10tor 230c/c
B13	230 x 600	2nos. 20tor	2nos. 20tor	—	—	—	—	—	—	—	8tor 150c/c	8tor 150c/c
B14	230 x 450	2nos. 12tor	2nos. 12tor	2nos. 16tor	2nos. 16tor	2nos. 16tor	2nos. 16tor	2nos. 16tor	2nos. 16tor	—	8tor 150c/c	8tor 230c/c
B15	230 x 600	2nos. 25tor	2nos. 25tor	2nos. 25tor	2nos. 25tor	2nos. 25tor	2nos. 25tor	2nos. 25tor	2nos. 25tor	—	10tor 150c/c	10tor 230c/c
B16	230 x 600	2nos. 20tor	2nos. 20tor	—	—	—	—	—	—	—	8tor 150c/c	8tor 150c/c



TYPICAL BEAM DETAIL

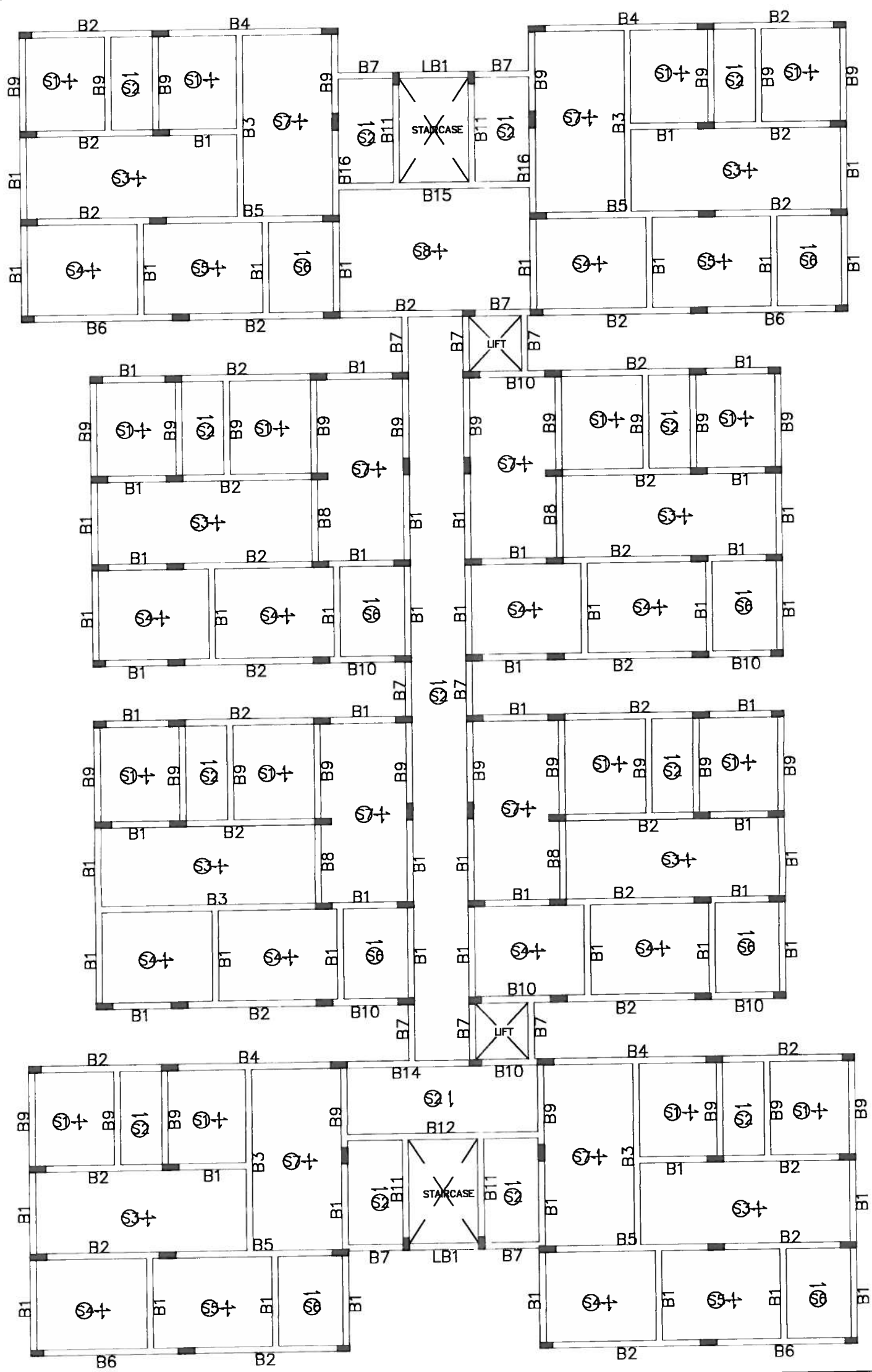
PROJECT :
 PLAN SHOWING THE PROPOSED GROUP HOUSING SCHEME IN SY. NO. 19
 OF MALLAPUR VILLAGE, GHMC KAPRA CIRCLE, UPPAL MANDAL, MEDCHAL
 DISTRICT.
 BELONGING TO:
 M/s. GULMOHAR RESIDENCY & JADE ESTATES.
 DEVELOPERS:
 M/s. MODI ESTATES REPRESENTED BY ITS MANAGING PARTNER SHRI.
 SOHAM MODI AND PARAMOUNT AVENUES PVT LTD. REPRESENTED BY ITS
 DIRECTOR SHRI GAURANG MODI.
 TITLE: TYPICAL SLAB BEAM DETAILS (BLOCK-EdF)

- NOTES:
- CRANKING OF BARS SHOULD BE DONE @ 1/4 TH OF THE SPAN @ AN ANGLE OF 45°.
 - MIX SHALL BE M20 (1:1:2:3) WITH W/C RATIO 0.40.
 - COVERING FOR MAIN REINFORCEMENT SHALL BE 20mm FOR SLABS & 25mm FOR BEAMS.
 - CURING SHALL BE DONE FOR 21 DAYS.

DATE	REV.	REVISIONS	DATE	DEALT	DRAWN	CHECKED
26-10-2017	MRS. VINITHA	LAVER HUSSAIN	MRS. VINITHA			

ZAKI & ASSOCIATES
 STRUCTURAL ENGINEERS
 407, The Heights Commercial Complex,
 Baleshwar Road, Hyderabad, India
 Ph: 23224772
 Email: zaki@zakiandassociates.com
ZAKI LAVER
 CONSULTING ENGINEER

ARCHITECT: ST/19



PROJECT :
 PLAN SHOWING THE PROPOSED GROUP HOUSING SCHEME IN SY.NO. 19
 OF MALLAPUR VILLAGE, GHMC KAPRA CIRCLE, UPPAL MANDAL, MEDCHAL
 DISTRICT.
 BELONGING TO:
 M/s. GULMOHAR RESIDENCY & JADE ESTATES.
 DEVELOPERS:
 M/s. MODI ESTATES REPRESENTED BY ITS MANAGING PARTNER SHRI.
 SOHAM MODI AND PARAMOUNT AVENUES PVT LTD. REPRESENTED BY ITS
 DIRECTOR SHRI GAURANG MODI.

TITLE : 1ST SLAB BEAM FRAMING LAYOUT (BLOCK-E&F)

NOTES :

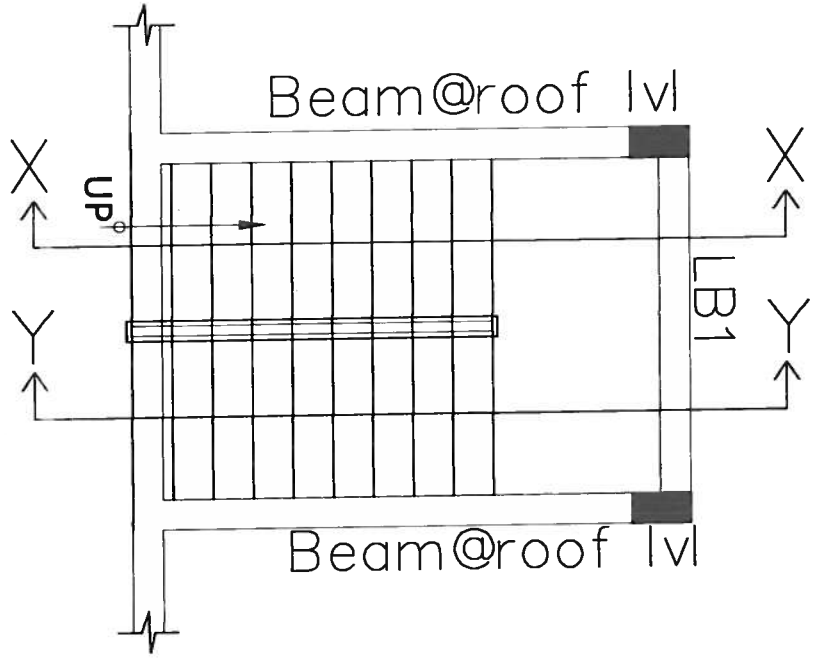
- ① CRANKING OF BARS SHOULD BE DONE @ 1/4 TH OF THE SPAN @ AN ANGLE OF 45°.
- ② MIX SHALL BE M20 (1:1:2:3) WITH W/C RATIO 0.40.
- ③ COVERING FOR MAIN REINFORCEMENT SHALL BE 20mm FOR SLABS & 25mm FOR BEAMS
- ④ CURING SHALL BE DONE FOR 21 DAYS.

DATE :	REV. NO. :	REVISIONS :	DATE :	DEALT :	DRAWN :	CHECKED :
26-10-2017				MRS. VINITHA AMER HUSSAIN		MRS. VINITHA

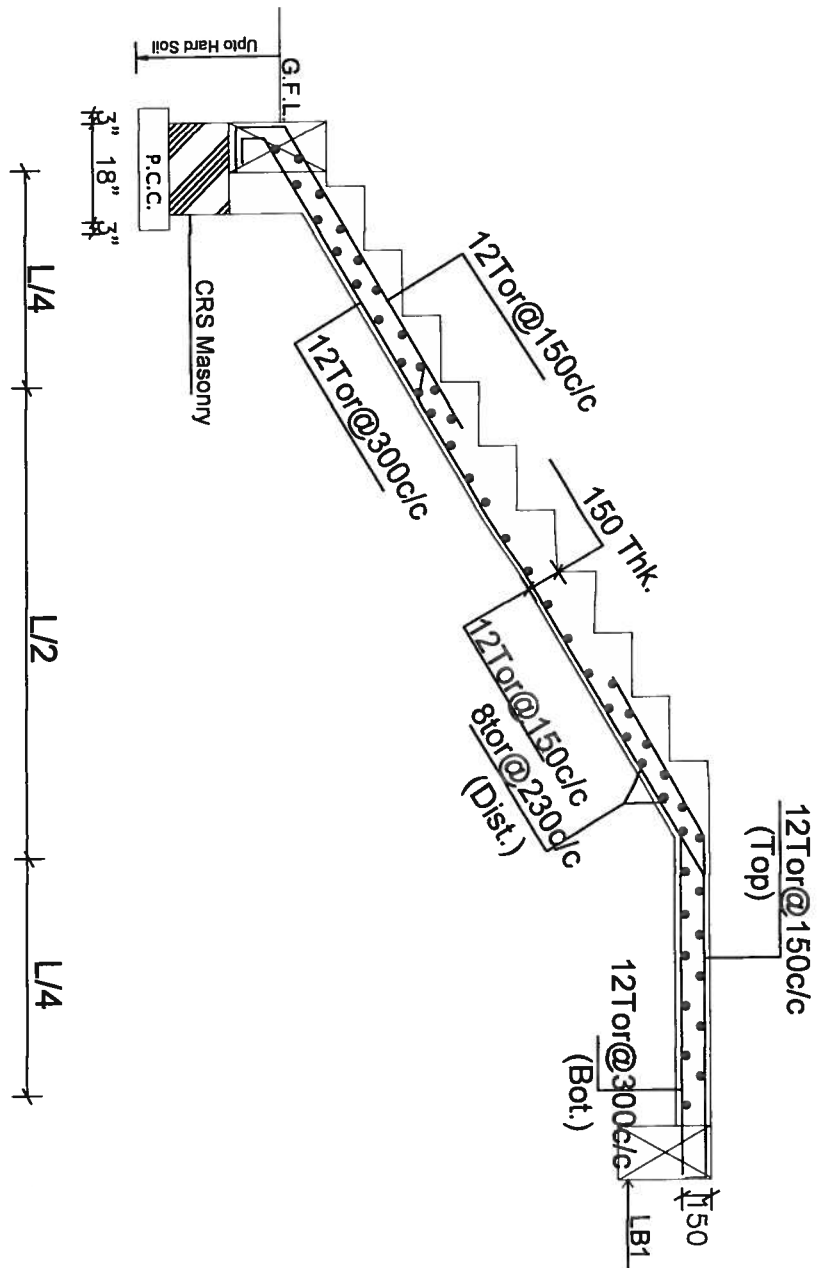
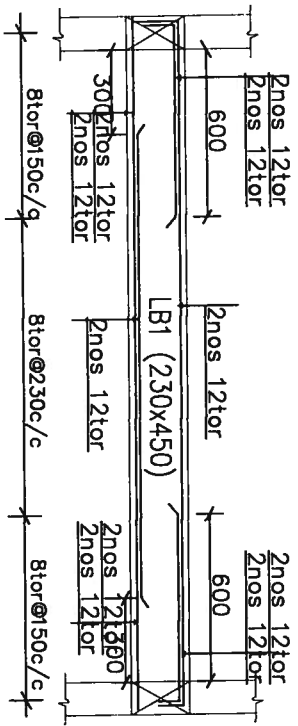
ARCHITECT :

 ZAKI & ASSOCIATES
 STRUCTURAL ENGINEERS
 4th Floor, Amrutha, Oranental Complex,
 Sanku Ramayya Hills, Hyderabad, Hyd
 23224772
 Email: zakiassociates@gmail.com
 ZAKI AHMED
 CONSULTING ENGINEER

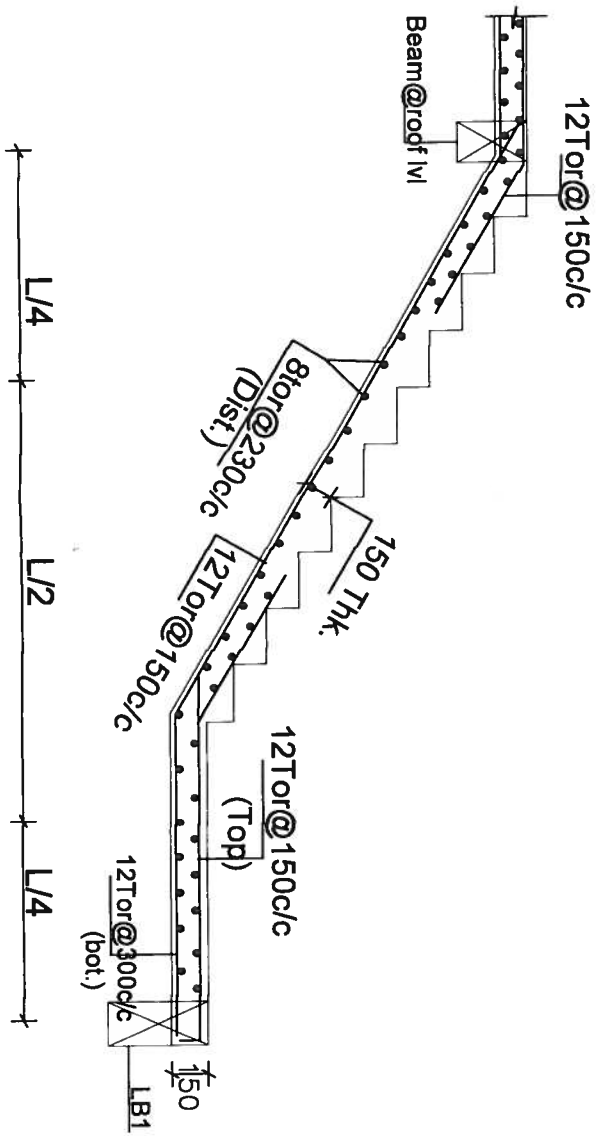
ST/18



STAIRCASE PLAN



SECTION @ Y - Y



PROJECT :
 PLAN SHOWING THE PROPOSED GROUP HOUSING SCHEME IN SY.NO. 19 OF MALLAPUR VILLAGE, GHMC KAPRA CIRCLE, UPPAL MANDAL, MEDCHAL DISTRICT BELONGING TO: M/s. GULMOHAR RESIDENCY & JADE ESTATES. DEVELOPERS: M/s. MODI ESTATES REPRESENTED BY ITS MANAGING PARTNER SHRI. SOHAM MODI AND PARAMOUNT AVENUES PVT LTD. REPRESENTED BY ITS DIRECTOR SHRI GAURANG MODI.

TITLE : STAIRCASE DETAILS (Block-4#)

NOTES:
 1) SPACING OF BARS SHOULD BE DONE @ 1/4 TH OF THE SPAN @ AN ANGLE OF 45°
 2) MIX SHALL BE M20 (1:1:2) WITH W/C RATIO 0.40.
 3) COVERING FOR MAIN REINFORCEMENT SHALL BE 20mm FOR SLABS & 25mm FOR BEAMS
 4) CURING SHALL BE DONE FOR 21 DAYS

DATE	REVISIONS	BY	CHECKED
26/10/2017	ISSUED FOR TENDER	MRS. VINITA ANSARI HUSSAIN	MRS. VINITA

ARCHITECT: ZAKI AHMED, CONSULTING ENGINEER

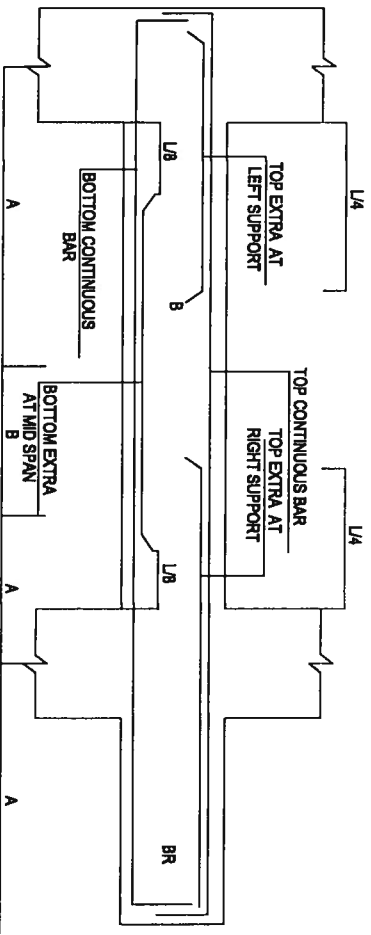
ST/17

BEAM REINFORCEMENT DETAILS

BEAM No.	BEAM SIZE	TOP CONTINUOUS BARS		BOTTOM CONTINUOUS BARS		TOP EXTRA AT LEFT SUPPORT	TOP EXTRA AT RIGHT SUPPORT	BOTTOM EXTRA AT MID SPAN	SIDE REINFORCEMENT	STIRRUPS AT 'A'	STIRRUPS AT 'B'
		2Nos. 12T or	2Nos. 16T or	2Nos. 12T or	2Nos. 16T or	2Nos. 12T or	2Nos. 20T or	2Nos. 25T or			
B1	230 x 450	2Nos. 12T or	2Nos. 16T or	2Nos. 12T or	2Nos. 16T or	2Nos. 12T or	2Nos. 20T or	2Nos. 12T or	---	8T or 150dc	8T or 230dc
B2	230 x 600	2Nos. 16T or	2Nos. 16T or	2Nos. 16T or	2Nos. 16T or	2Nos. 20T or	2Nos. 20T or	2Nos. 20T or	---	8T or 150dc	8T or 230dc
B3	230 x 600	2Nos. 20T or	2Nos. 20T or	2Nos. 20T or	2Nos. 20T or	2Nos. 25T or	2Nos. 25T or	2Nos. 25T or	---	10T or 150dc	10T or 230dc
B4	230 x 450	2Nos. 12T or	2Nos. 12T or	2Nos. 12T or	2Nos. 12T or	2Nos. 16T or	2Nos. 16T or	2Nos. 16T or	---	8T or 150dc	8T or 230dc
B5	230 x 450	2Nos. 16T or	2Nos. 16T or	2Nos. 16T or	2Nos. 16T or	---	---	---	---	8T or 150dc	8T or 150dc
B6	230 x 600	2Nos. 25T or	2Nos. 25T or	2Nos. 25T or	2Nos. 25T or	2Nos. 25T or	2Nos. 25T or	2Nos. 25T or	---	10T or 150dc	10T or 230dc
B7	230 x 600	2Nos. 20T or	2Nos. 20T or	2Nos. 20T or	2Nos. 20T or	---	---	---	---	8T or 150dc	8T or 150dc
B8	230 x 600	2Nos. 25T or	2Nos. 25T or	2Nos. 25T or	2Nos. 25T or	3Nos. 25T or	3Nos. 25T or	3Nos. 25T or	---	10T or 150dc	10T or 230dc
B9	230 x 600	2Nos. 25T or	2Nos. 25T or	2Nos. 25T or	2Nos. 25T or	---	---	---	---	10T or 150dc	10T or 150dc
B10	230 x 450	2Nos. 12T or	2Nos. 12T or	2Nos. 12T or	2Nos. 12T or	---	---	---	---	8T or 150dc	8T or 230dc
B11	230 x 450	2Nos. 16T or	2Nos. 16T or	2Nos. 16T or	2Nos. 16T or	2Nos. 16T or	2Nos. 16T or	2Nos. 16T or	---	8T or 150dc	8T or 230dc

SLAB REINFORCEMENT DETAILS

SLAB No.	SLAB THICKNESS MM	ALONG SHORT SPAN			ALONG LONG SPAN			REMARKS
		TOP AT SUPPORTS	BOTTOM AT MIDSPAN	TOP AT SUPPORTS	BOTTOM AT MIDSPAN	TOP AT SUPPORTS	BOTTOM AT MIDSPAN	
S1	125	8T or 150dc	8T or 150dc	8T or 150dc	8T or 150dc	8T or 150dc	8T or 150dc	Two - Way
S2	100	8T or 150dc	8T or 150dc	8T or 230dc	8T or 230dc	---	---	One - Way
S3	125	10T or 150dc	10T or 150dc	10T or 230dc	10T or 230dc	10T or 230dc	10T or 230dc	Two - Way
S4	125	8T or 150dc	8T or 150dc	8T or 230dc	8T or 230dc	8T or 230dc	8T or 230dc	Two - Way
S5	100	10T or 150dc	10T or 150dc	8T or 230dc	---	---	---	One - Way
S6	125	10T or 150dc	10T or 150dc	10T or 150dc	10T or 150dc	10T or 150dc	10T or 150dc	Two - Way



PROJECT :
 PLAN SHOWING THE PROPOSED GROUP HOUSING SCHEME IN SY.NO. 19 OF MALLAPUR VILLAGE, GHMC KAPPA CIRCLE, UPPAL MANDAL, MEDCHAL DISTRICT.

BELONGING TO:
 M/s. GULMOHAR RESIDENCY & JADE ESTATES.

DEVELOPERS:
 M/s. MODI ESTATES REPRESENTED BY ITS MANAGING PARTNER SHRI. SOHAM MODI AND PARAMOUNT AVENUES PVT.LTD. REPRESENTED BY ITS DIRECTOR SHRI GAURANG MODI.

TITLE :
 TYPICAL SLAB & BEAM DETAILS (BLOCK-D)

NOTES :

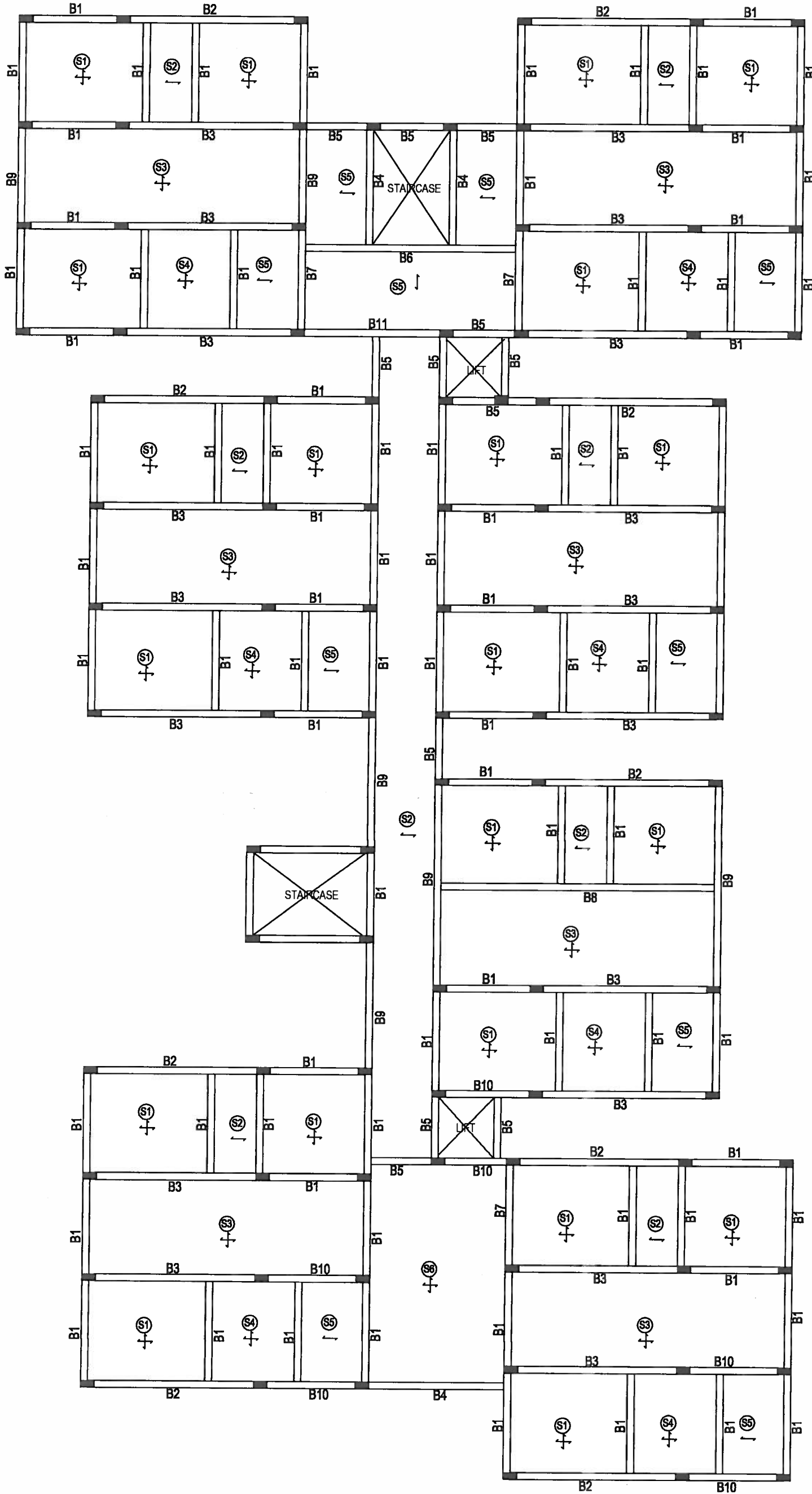
- CRANKING OF BARS SHOULD BE DONE @ 1/4 TH OF THE SPAN @ AN ANGLE OF 45°.
- MIX SHALL BE M20 (1:1.5:3) WITH W/C RATIO 0.40.
- COVERING FOR MAIN REINFORCEMENT SHALL BE 20mm FOR SLABS & 25mm FOR BEAMS.
- CURING SHALL BE DONE FOR 21 DAYS.

DATE	REVNO.	REVISIONS	DATE	DEALT.	DRAWN	CHECKED
26.10.2017				VENITIA	SABIRA	VENITIA

ARCHITECT :
ZAKI AHMED
 CONSULTING ENGINEER

ZAKI & ASSOCIATES
 STRUCTURAL ENGINEERS
 4th Floor, Anand Commercial Complex,
 Beside Ramesh Hospital, Himayadurg, 1/4
 2nd Floor, Himayadurg, 1/4
 2nd Floor, Himayadurg, 1/4

Z-ST/16



PROJECT :
 PLAN SHOWING THE PROPOSED GROUP HOUSING SCHEME IN SY.NO. 19 OF MALLAPUR VILLAGE, GHMC KAPRA CIRCLE, UPPAL MANDAL, MEDCHAL DISTRICT.

BELONGING TO:
 M/s. GULMOHAR RESIDENCY & JADE ESTATES.

DEVELOPERS:
 M/s. MODI ESTATES REPRESENTED BY ITS MANAGING PARTNER SHRI. SOHAM MODI AND PARAMOUNT AVENUES PVT LTD. REPRESENTED BY ITS DIRECTOR SHRI GAURANG MODI.

TITLE : TYPICAL SLAB & BEAM DETAILS (BLOCK-D)

NOTES :

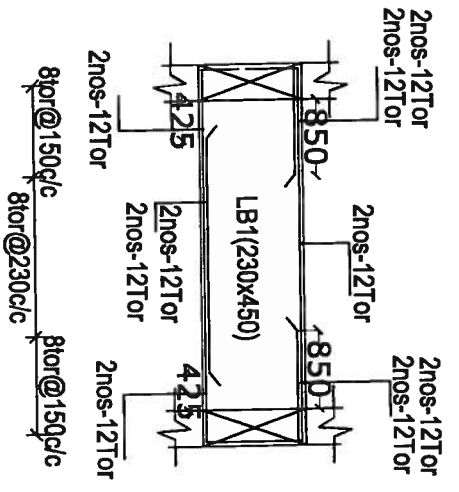
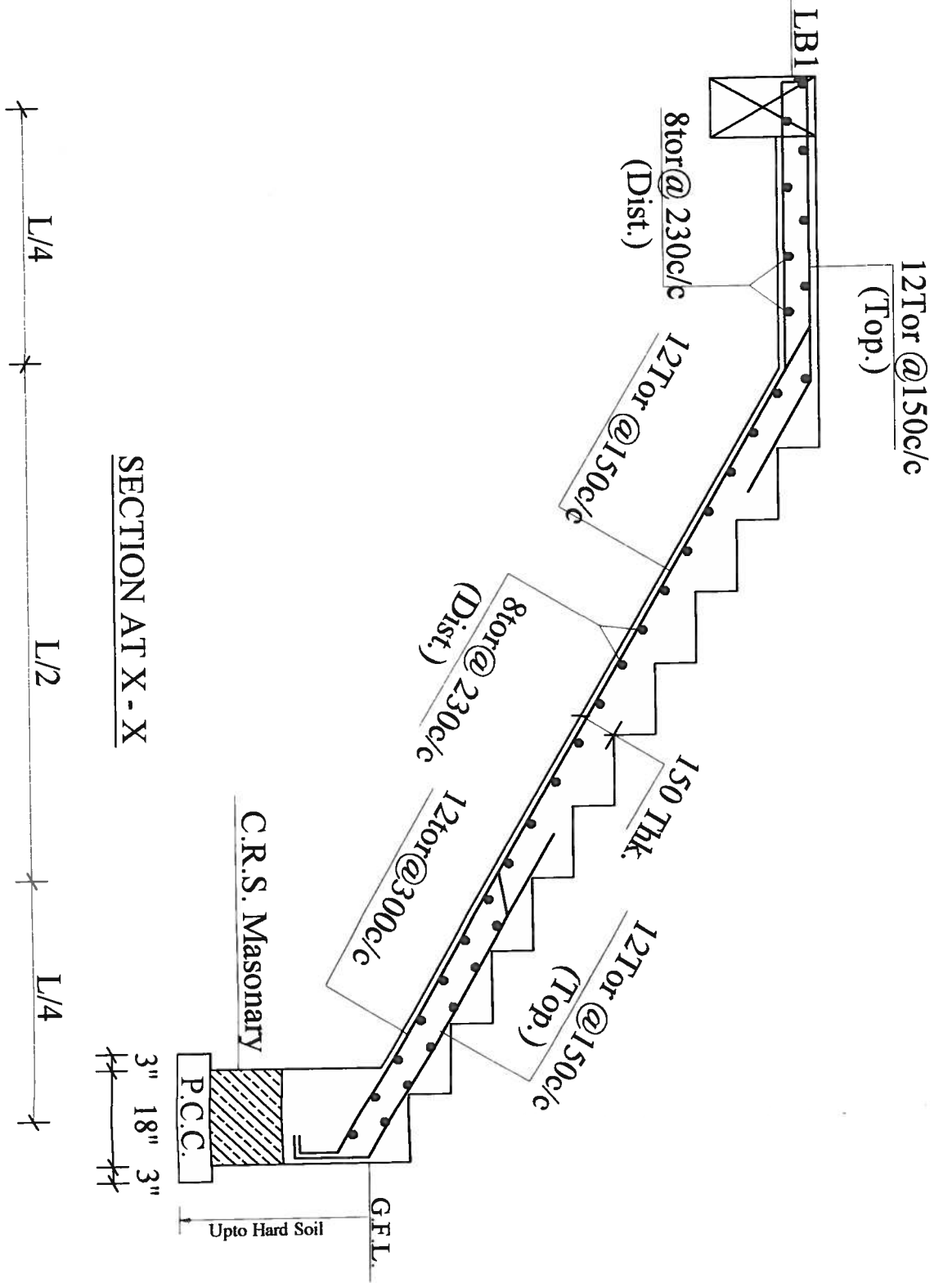
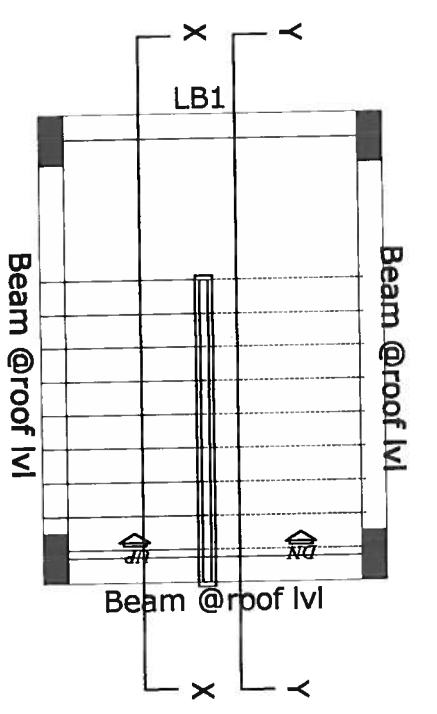
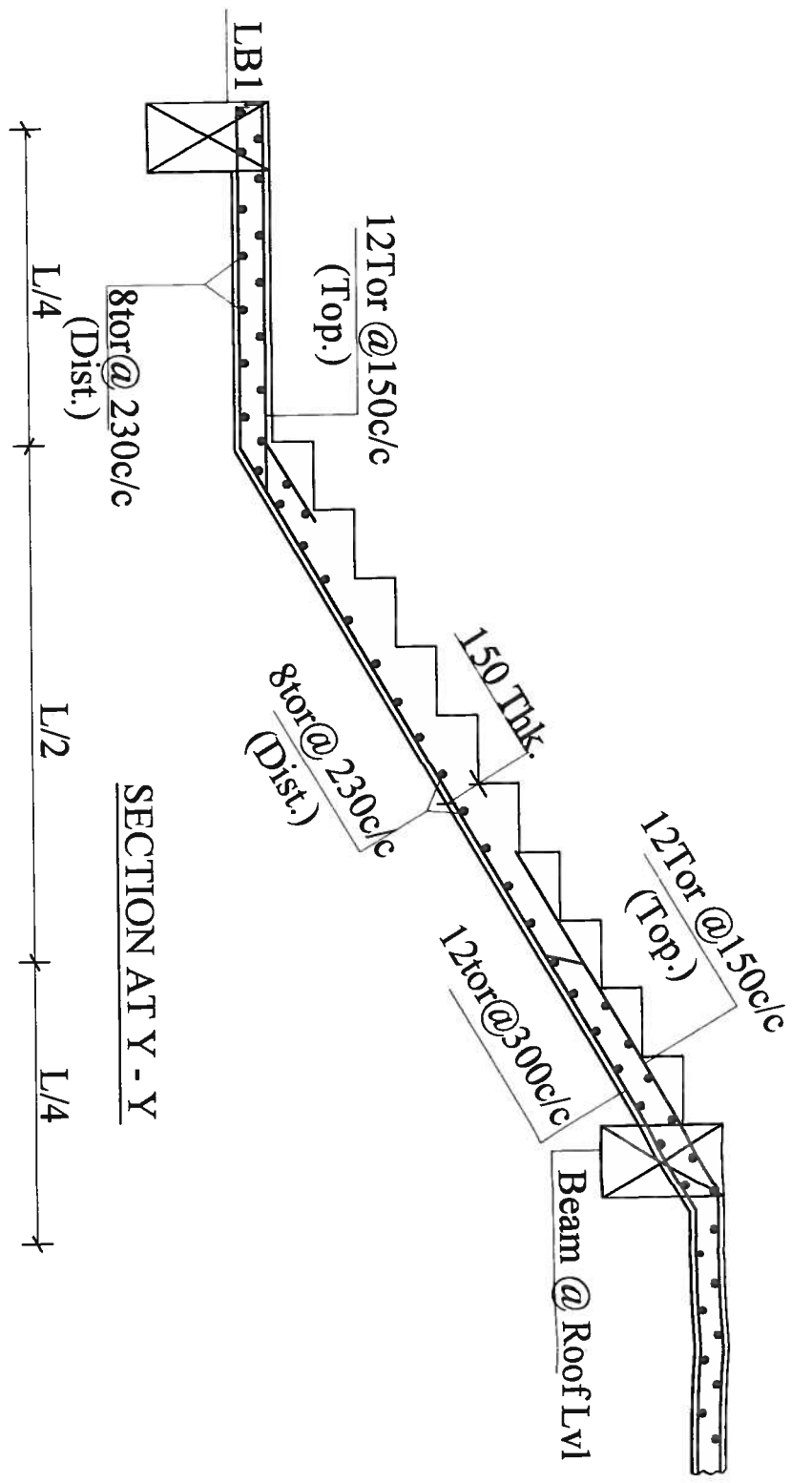
- ① CRANKING OF BARS SHOULD BE DONE @ 1/4 TH OF THE SPAN @ AN ANGLE OF 45°.
- ② MIX SHALL BE M20 (1:1:2:3) WITH W/C RATIO 0.40.
- ③ COVERING FOR MAIN REINFORCEMENT SHALL BE 20mm FOR SLABS & 25mm FOR BEAMS.
- ④ CURING SHALL BE DONE FOR 21 DAYS.

DATE / TRK / REVISIONS :	DATE :	DESIGN :	DRAWN :	CHECKED :
	26-10-2017	VINITHA	MAHILA	VINITHA

ARCHITECT : ZAKI & ASSOCIATES
 CIVIL ENGINEERS
 4th Floor, Anaparthi Complex, Hyderabad, India.
 Mobile: 9849114473
 Email: zakimedi@rediffmail.com

ZAKI AHMED
 CONSULTING ENGINEER

Z-ST/15



SECTION AT X - X

SECTION AT Y - Y

PROJECT :
 PLAN SHOWING THE PROPOSED GROUP HOUSING SCHEME IN SY.NO. 19 OF MALLAPUR VILLAGE, GHMC KAPPA CIRCLE, UPPAL MANDAL, MEDICAL DISTRICT.

BELONGING TO:
 M/s. GUNMOHAR RESIDENCY & JADE ESTATES.

DEVELOPERS:
 M/s. MODI ESTATES REPRESENTED BY ITS MANAGING PARTNER SHRI. SOHAM MODI AND PARAMOUNT AVENUES PVT LTD. REPRESENTED BY ITS DIRECTOR SHRI GAURANG MODI.

TITLE :
 STAIRCASE DETAILS (BLOCK-D)

NOTES :

- CRANKING OF BARS SHOULD BE DONE @ 1/4 TH OF THE SPAN @ AN ANGLE OF 45°.
- MIX SHALL BE M20 (1:1:2.3) WITH W/C RATIO 0.40.
- COVERING FOR MAIN REINFORCEMENT SHALL BE 20mm FOR SLABS & 25mm FOR BEAMS.
- CURING SHALL BE DONE FOR 21 DAYS.

DATE	REVISIONS	DRAWN	CHECKED
26-10-2017	YANTHA	SAHARA	YANTHA

ARCHITECT:
ZAKI AHMED
 CONSULTING ENGINEER

ENGINEER:
ZAKI & ASSOCIATES
 STRUCTURAL ENGINEERS
 4th Floor, 5th Cross, Hennur, Bengaluru, Karnataka, India
 Phone: 98454224772
 Email: zaki@zakiandassociates.com

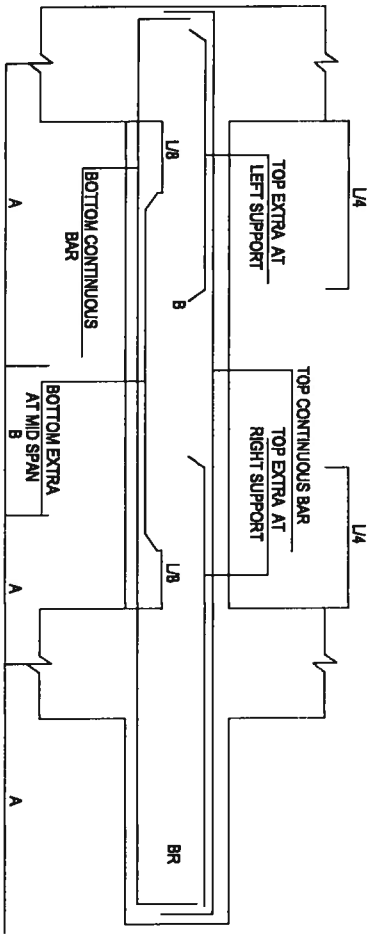
PROJECT NO: Z-ST/14

BEAM REINFORCEMENT DETAILS

BEAM No.	BEAM SIZE	CONTINUOUS BARS		TOP EXTRA AT LEFT SUPPORT	TOP EXTRA AT RIGHT SUPPORT	BOTTOM EXTRA AT MID SPAN	SIDE REINFORCEMENT	STIRRUPS AT 'A'	STIRRUPS AT 'B'
		TOP CONTINUOUS BARS	BOTTOM CONTINUOUS BARS						
B1	230 x 450	2Nos. 12T or	2Nos. 12T or	2Nos. 12T or	2Nos. 12T or	2Nos. 12T or	—	8T or 150c/c	8T or 230c/c
B2	230 x 600	2Nos. 16T or	2Nos. 16T or	2Nos. 20T or	2Nos. 20T or	2Nos. 20T or	—	8T or 150c/c	8T or 230c/c
B3	230 x 600	2Nos. 20T or	2Nos. 20T or	2Nos. 25T or	2Nos. 25T or	2Nos. 25T or	—	10T or 150c/c	10T or 230c/c
B4	230 x 450	2Nos. 12T or	2Nos. 12T or	2Nos. 16T or	2Nos. 16T or	2Nos. 16T or	—	8T or 150c/c	8T or 230c/c
B5	230 x 450	2Nos. 16T or	2Nos. 16T or	—	—	—	—	8T or 150c/c	8T or 150c/c
B6	230 x 600	2Nos. 25T or	2Nos. 25T or	2Nos. 25T or	2Nos. 25T or	2Nos. 25T or	—	10T or 150c/c	10T or 230c/c
B7	230 x 600	2Nos. 20T or 2Nos. 20T or	2Nos. 20T or 2Nos. 20T or	—	—	—	—	8T or 150c/c	8T or 150c/c
B8	230 x 600	2Nos. 25T or	2Nos. 25T or	3Nos. 25T or	3Nos. 25T or	3Nos. 25T or	—	10T or 150c/c	10T or 230c/c
B9	230 x 600	2Nos. 25T or 2Nos. 25T or	2Nos. 25T or 2Nos. 25T or	—	—	—	—	10T or 150c/c	10T or 150c/c
B10	230 x 450	2Nos. 12T or 2Nos. 12T or	2Nos. 12T or 2Nos. 12T or	—	—	—	—	8T or 150c/c	8T or 230c/c
B11	230 x 450	2Nos. 16T or	2Nos. 16T or	2Nos. 16T or	2Nos. 16T or	2Nos. 16T or	—	8T or 150c/c	8T or 230c/c

SLAB REINFORCEMENT DETAILS

SLAB No.	SLAB THICKNESS MM	ALONG SHORT SPAN			ALONG LONG SPAN			REMARKS
		TOP AT SUPPORTS	BOTTOM AT MIDSPAN	TOP AT SUPPORTS	BOTTOM AT MIDSPAN	TOP AT SUPPORTS	BOTTOM AT MIDSPAN	
S1	125	8T or 150c/c	8T or 150c/c	8T or 150c/c	8T or 150c/c	8T or 150c/c	8T or 150c/c	Two - Way
S2	100	8T or 150c/c	8T or 150c/c	8T or 230c/c	8T or 230c/c	—	—	One - Way
S3	125	10T or 150c/c	10T or 150c/c	10T or 230c/c	10T or 230c/c	10T or 230c/c	10T or 230c/c	Two - Way
S4	125	8T or 150c/c	8T or 150c/c	8T or 230c/c	8T or 230c/c	8T or 230c/c	8T or 230c/c	Two - Way
S5	100	10T or 150c/c	10T or 150c/c	8T or 230c/c	8T or 230c/c	—	—	One - Way



PROJECT :
 PLAN SHOWING THE PROPOSED GROUP HOUSING SCHEME IN SY.NO. 19 OF MALLAPUR VILLAGE, GHMC KAPPA CIRCLE, UPPAL, MANDAL, MEDICAL DISTRICT.

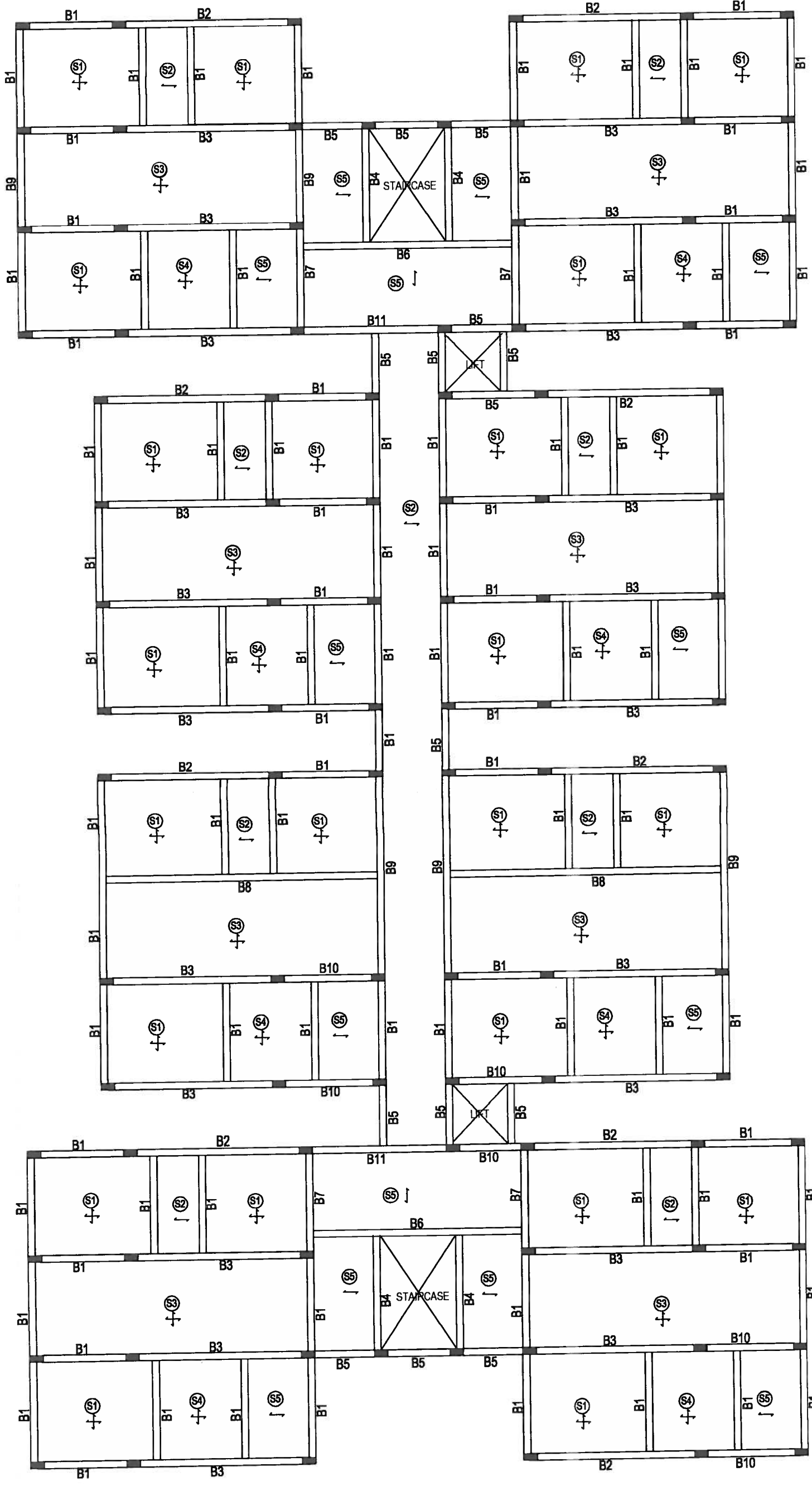
BELONGING TO:
 M/s. GULMOHAR RESIDENCY & JADE ESTATES.

DEVELOPERS:
 M/s. MODI ESTATES REPRESENTED BY ITS MANAGING PARTNER SHRI. SOHAM MODI AND PARAMOUNT AVENUES PVT LTD. REPRESENTED BY ITS DIRECTOR SHRI GAURANG MODI.

TITLE :
 TYPICAL SLAB & BEAM DETAILS (BLOCK-B,C,H,I,J,K)

- NOTES :**
- CRANKING OF BARS SHOULD BE DONE @ 1/4 TH OF THE SPAN @ AN ANGLE OF 45°.
 - MIX SHALL BE M20 (1:1:2) WITH W/C RATIO 0.40.
 - COVERING FOR MAIN REINFORCEMENT SHALL BE 20mm FOR SLABS & 25mm FOR BEAMS.
 - CURING SHALL BE DONE FOR 21 DAYS.

DATE :	REVNO :	REVISIONS :
DATE :	DEALT :	DRAWN :
26-10-2017	VINITRA	SABIRA
<p>ZAKI & ASSOCIATES STRUCTURAL ENGINEERS 4th Floor, Ananya Commercial Complex, Jubilee Hills, Hyderabad - 500049, India Email: zakimod@zakiandassociates.com Phone: 9848122417</p>		
ARCHITECT :	<p>ZAKI AHMED CONSULTING ENGINEER</p>	
CHECKED :	<p>VINITRA</p>	
<p>Z-ST/13</p>		



PROJECT :
 PLAN SHOWING THE PROPOSED GROUP HOUSING SCHEME IN SY.NO. 18 OF MALLAPUR VILLAGE, CHMC KAPRA CIRCLE, UPPAL MANDAL, MEDCHAL DISTRICT.

BELONGING TO:
 M/s. GULMOHAR RESIDENCY & JADE ESTATES.

DEVELOPER:
 M/s. MODI ESTATES REPRESENTED BY ITS MANAGING PARTNER SHRI. SHAMU MODI AND PARAMOUNT AVENUES PVT LTD. REPRESENTED BY ITS DIRECTOR SHRI GAURANG MODI.

TITLE : TYPICAL SLAB & BEAM DETAILS (BLOCK-B,C,H,I,J,K)

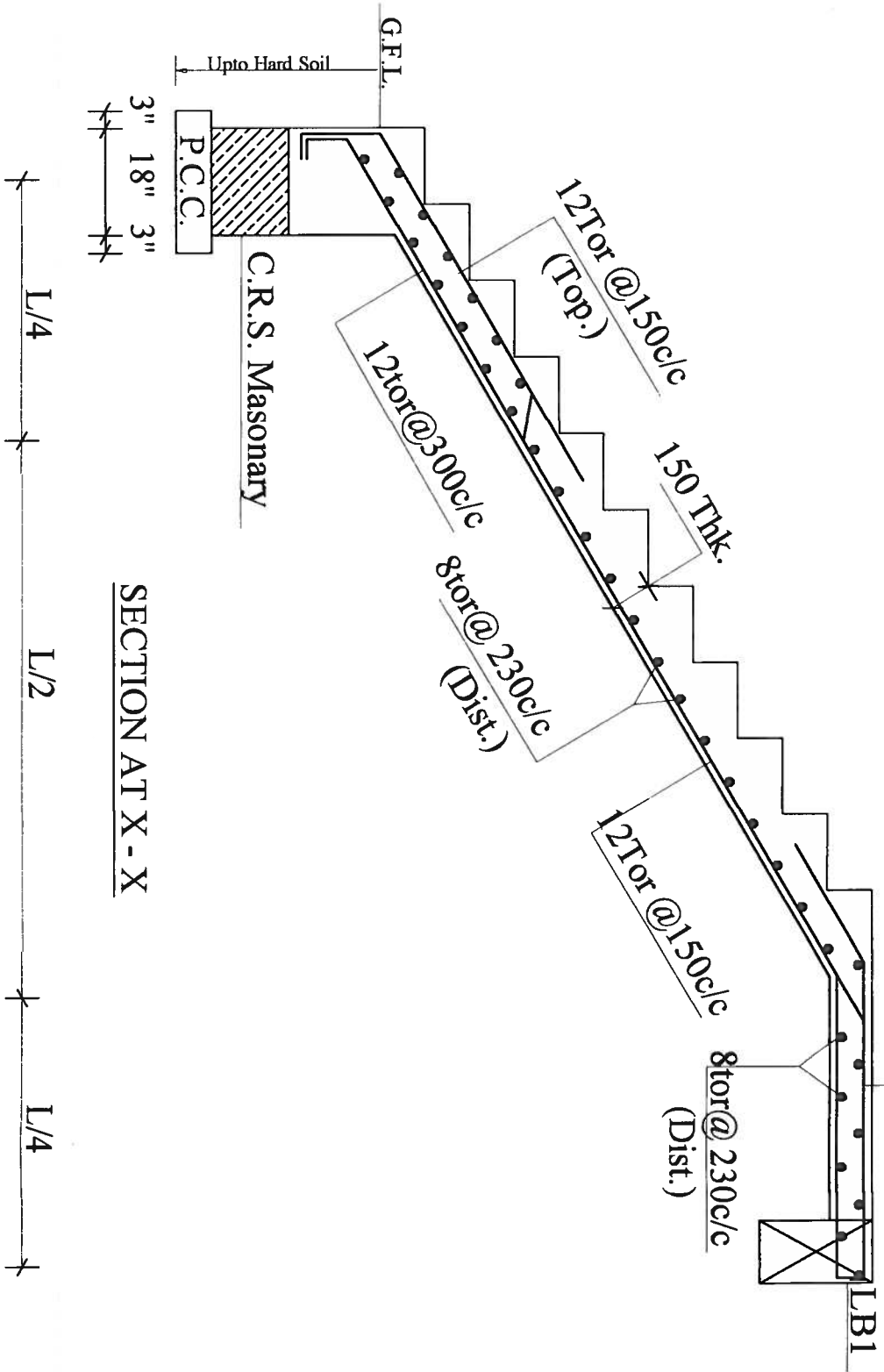
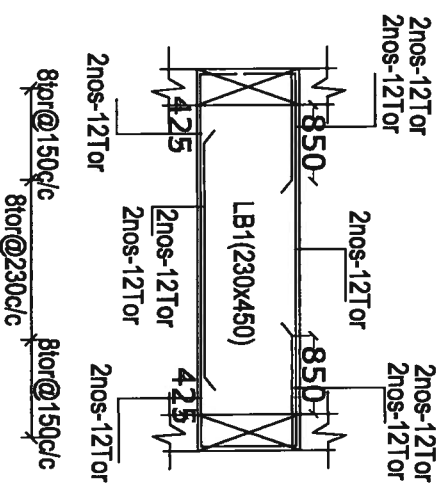
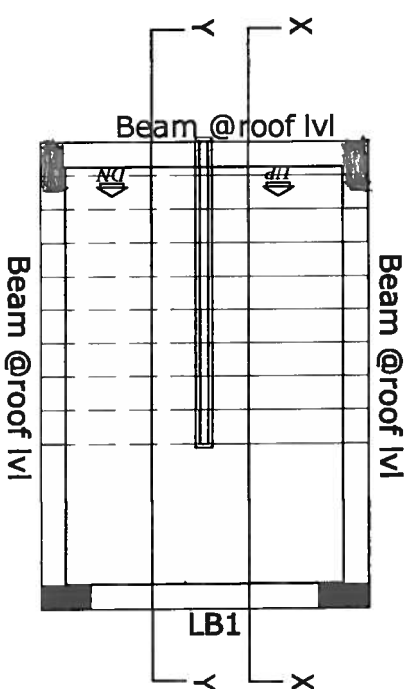
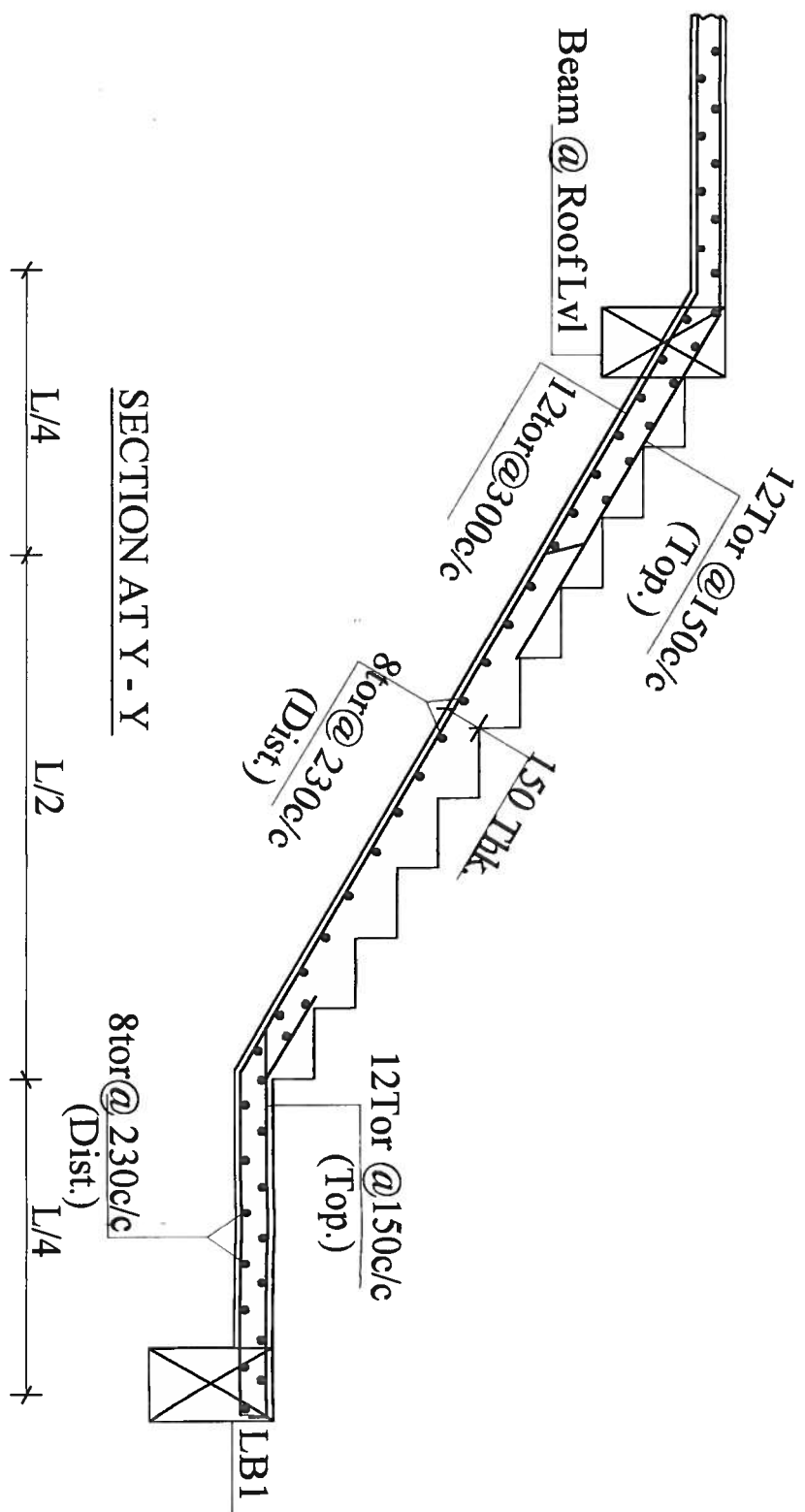
- NOTES :**
- ① CRANKING OF BARS SHOULD BE DONE @ 1/4 TH OF THE SPAN @ AN ANGLE OF 45°.
 - ② MIX SHALL BE M20 (1:1:2) WITH W/C RATIO 0.40.
 - ③ COVERING FOR MAIN REINFORCEMENT SHALL BE 20mm FOR SLABS & 25mm FOR BEAMS.
 - ④ CURING SHALL BE DONE FOR 21 DAYS.

DATE	REVISION	DESIGN	CHECK	DATE	REVISION	DESIGN	CHECK
25-10-2017		VINITHA	SABIRA				

ARCHITECT: ZAKI AHMED, CONSULTING ENGINEER

ENGINEER: ZAKI & ASSOCIATES STRUCTURAL ENGINEERS, 4th Floor, Ajiwada Commercial Complex, Dabbu Ramana Venkateswara, Hyderabad, Tel. No. 83334772

Z-ST/



PROJECT :
 PLAN SHOWING THE PROPOSED GROUP HOUSING SCHEME IN SY.NO. 19 OF MALLAPUR VILLAGE, GHMC KAPPA CIRCLE, UPPAL MANDAL, MEDICAL DISTRICT.

BELONGING TO:
 M/s. GULMOHAR RESIDENCY & JADE ESTATES.

DEVELOPERS:
 M/s. MODI ESTATES REPRESENTED BY ITS MANAGING PARTNER SHRI. SOHAM MODI AND PARAMOUNT AVENUES PVT LTD. REPRESENTED BY ITS DIRECTOR SHRI GAURANG MODI.

TITLE :
 STAIRCASE DETAILS (BLOCK-B,C,H,I,J,K)

NOTES :

- CRANKING OF BARS SHOULD BE DONE @ 1/4 TH OF THE SPAN @ AN ANGLE OF 45°.
- MIX SHALL BE M20 (1:1 1/2:3) WITH W/C RATIO 0.40.
- COVERING FOR MAIN REINFORCEMENT SHALL BE 20mm FOR SLABS & 25mm FOR BEAMS.
- CURING SHALL BE DONE FOR 21 DAYS.

DATE : 25-10-2017 **REVISIONS :**

DATE	DEPT.	DRAWN	CHECKED
25-10-2017	VINITHA	BARBARA	VINITHA

ARCHITECT : ZAKI AHMED ZAKI AHMED CONSULTING ENGINEER

ENGINEER : ZAKI AHMED ZAKI AHMED CONSULTING ENGINEER

DATE : 25-10-2017 **DEPT. :** VINITHA **DRAWN :** BARBARA **CHECKED :** VINITHA

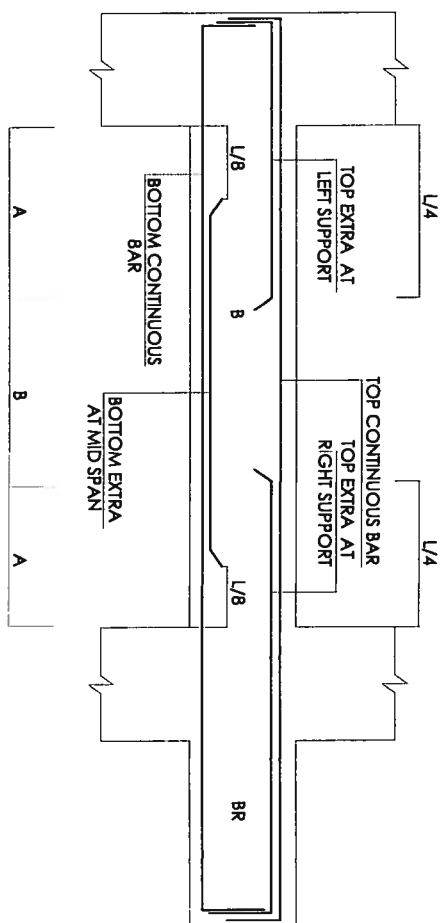
Z-ST/11

TYPICAL SLAB REINFORCEMENT DETAILS

SLAB No.	SLAB THICKNESS MM	ALONG SHORT SPAN		ALONG LONG SPAN		REMARKS
		TOP AT SUPPORTS	BOTTOM AT MIDSPAN	TOP AT SUPPORTS	BOTTOM AT MIDSPAN	
S1	125	8T or 150c/c	8T or 150c/c	8T or 150c/c	8T or 150c/c	Two - Way
S2	100	8T or 150c/c	8T or 150c/c	8T or 230c/c	8T or 230c/c	One - Way
S3	125	10T or 150c/c	10T or 150c/c	10T or 230c/c	10T or 230c/c	Two - Way
S4	125	8T or 150c/c	8T or 150c/c	8T or 230c/c	8T or 230c/c	Two - Way
S5	125	8T or 150c/c	8T or 150c/c	8T or 230c/c	8T or 230c/c	Two - Way
S6	125	10T or 150c/c	10T or 150c/c	8T or 230c/c	8T or 230c/c	One - Way
S7	125	10T or 150c/c	10T or 150c/c	8T or 150c/c	8T or 150c/c	Two - Way
S8	125	10T or 100c/c	10T or 100c/c	10T or 200c/c	10T or 200c/c	Two - Way

(TYPICAL SLAB BEAM DETAILS)

BEAM No.	BEAM SIZE	TOP CONTINUOUS BARS		BOTTOM CONTINUOUS BARS		TOP EXTRA AT LEFT SUPPORT		TOP EXTRA AT RIGHT SUPPORT		BOTTOM EXTRA AT MID SPAN		SIDE REINFORCEMENT	STIRRUPS AT 'A'	STIRRUPS AT 'B'
		2nos. 12tor	2nos. 16tor	2nos. 12tor	2nos. 16tor	2nos. 20tor	1no. 16tor	2nos. 20tor	2nos. 25tor	2nos. 25tor	2nos. 16tor			
B1	230 x 450	2nos. 12tor	2nos. 16tor	2nos. 12tor	2nos. 16tor	2nos. 20tor	1no. 16tor	2nos. 20tor	2nos. 25tor	2nos. 16tor	2nos. 25tor	---	8tor 150c/c	8tor 230c/c
B2	230 x 450	2nos. 16tor	2nos. 16tor	2nos. 16tor	2nos. 16tor	2nos. 20tor	---	2nos. 20tor	2nos. 25tor	2nos. 16tor	2nos. 25tor	---	8tor 150c/c	8tor 230c/c
B3	230 x 450	2nos. 16tor	2nos. 16tor	2nos. 20tor	2nos. 20tor	2nos. 20tor	1no. 16tor	2nos. 20tor	2nos. 25tor	2nos. 16tor	2nos. 25tor	---	8tor 150c/c	8tor 230c/c
B4	230 x 600	2nos. 20tor	2nos. 20tor	2nos. 20tor	2nos. 20tor	2nos. 25tor	---	2nos. 25tor	2nos. 25tor	2nos. 16tor	2nos. 25tor	---	10tor 150c/c	10tor 150c/c
B5	230 x 600	2nos. 20tor	2nos. 20tor	2nos. 20tor	2nos. 20tor	2nos. 25tor	---	2nos. 25tor	2nos. 25tor	2nos. 16tor	2nos. 25tor	---	10tor 150c/c	10tor 230c/c
B6	230 x 450	2nos. 16tor	2nos. 16tor	2nos. 16tor	2nos. 16tor	2nos. 16tor	---	2nos. 16tor	2nos. 16tor	2nos. 16tor	2nos. 16tor	---	8tor 150c/c	8tor 230c/c
B7	230 x 450	2nos. 16tor	2nos. 16tor	2nos. 16tor	2nos. 16tor	---	---	---	---	---	---	---	8tor 150c/c	8tor 150c/c
B8	230 x 450	2nos. 12tor	2nos. 12tor	2nos. 12tor	2nos. 12tor	2nos. 12tor	---	2nos. 12tor	2nos. 12tor	2nos. 12tor	2nos. 12tor	---	8tor 150c/c	8tor 230c/c
B9	230 x 450	2nos. 12tor	2nos. 12tor	2nos. 12tor	2nos. 12tor	2nos. 16tor	---	2nos. 16tor	2nos. 16tor	2nos. 16tor	2nos. 16tor	---	8tor 150c/c	8tor 230c/c
B10	230 x 450	2nos. 12tor	2nos. 12tor	2nos. 12tor	2nos. 12tor	---	---	---	---	---	---	---	8tor 150c/c	8tor 150c/c
B11	230 x 450	2nos. 12tor	2nos. 12tor	2nos. 12tor	2nos. 12tor	2nos. 16tor	---	2nos. 16tor	2nos. 16tor	2nos. 16tor	2nos. 16tor	---	8tor 150c/c	8tor 230c/c
B12	230 x 600	2nos. 25tor	2nos. 25tor	2nos. 25tor	2nos. 25tor	2nos. 25tor	---	2nos. 25tor	2nos. 25tor	2nos. 25tor	2nos. 25tor	---	10tor 150c/c	10tor 230c/c
B13	230 x 600	2nos. 20tor	2nos. 20tor	2nos. 20tor	2nos. 20tor	---	---	---	---	---	---	---	8tor 150c/c	8tor 150c/c
B14	230 x 450	2nos. 12tor	2nos. 12tor	2nos. 12tor	2nos. 12tor	2nos. 16tor	---	2nos. 16tor	2nos. 16tor	2nos. 16tor	2nos. 16tor	---	8tor 150c/c	8tor 230c/c
B15	230 x 600	2nos. 25tor	2nos. 25tor	2nos. 25tor	2nos. 25tor	2nos. 25tor	---	2nos. 25tor	2nos. 25tor	2nos. 25tor	2nos. 25tor	---	10tor 150c/c	10tor 230c/c
B16	230 x 600	2nos. 20tor	2nos. 20tor	2nos. 20tor	2nos. 20tor	---	---	---	---	---	---	---	8tor 150c/c	8tor 150c/c



TYPICAL BEAM DETAIL

PROJECT :
 PLAN SHOWING THE PROPOSED GROUP HOUSING SCHEME IN SY. NO. 19 OF MALLAPUR VILLAGE, GHMC KAPRA CIRCLE, UPPAL MANDAL, MEDCHAL DISTRICT.

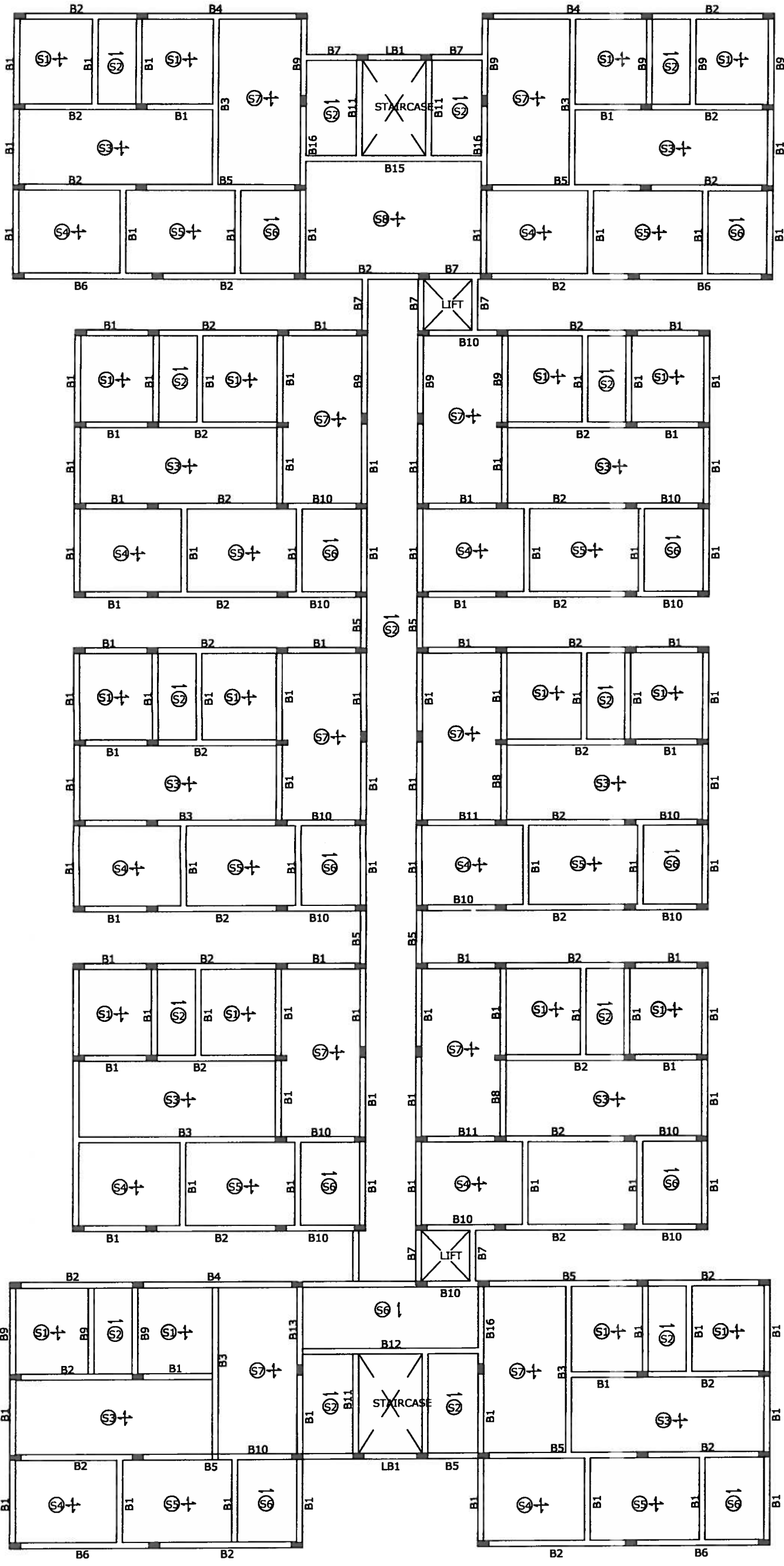
BELONGING TO:
 M/s. GULMOHAR RESIDENCY & JADE ESTATES.

DEVELOPERS:
 M/s. MODI ESTATES REPRESENTED BY ITS MANAGING PARTNER SHRI. SOHAM MODI AND PARAMOUNT AVENUES PVT LTD. REPRESENTED BY ITS DIRECTOR SHRI GAURANG MODI.

TITLE :
 TYPICAL SLAB BEAM DETAILS (Block - A)

- NOTES :**
- CRANKING OF BARS SHOULD BE DONE @ 1/4 TH OF THE SPAN @ AN ANGLE OF 45°.
 - MIX SHALL BE M20 (1:1:2:3) WITH W/C RATIO 0.40.
 - COVERING FOR MAIN REINFORCEMENT SHALL BE 20mm FOR SLABS & 25mm FOR BEAMS.
 - CURING SHALL BE DONE FOR 21 DAYS.

DATE: 26-10-2017	REVISIONS:	DATE:	IDEALTY:	DRAWN:	CHECKED:
				MRS. VINITHA SAHERA	MRS. VINITHA
<p>ZAKI & ASSOCIATES STRUCTURAL ENGINEERS, 4th Floor, Ananya Commercial Complex, Beside Nandya Hospital, Hyderabad - 500082. Ph: 28224172 Email: zakiconcepts@gmail.com</p>					
<p>ZAKI AHMED CONSULTING ENGINEER</p>					ST/10



PROJECT :
 PLAN SHOWING THE PROPOSED GROUP HOUSING SCHEME IN SY.NO. 19 OF MALLAPUR VILLAGE, GHMC KAPRA CIRCLE, UPPAL MANDAL, MEDCHAL DISTRICT.

BELONGING TO:
 M/s. GULMOHAR RESIDENCY & JADE ESTATES.

DEVELOPERS:
 M/s. MODI ESTATES REPRESENTED BY ITS MANAGING PARTNER SHRI. SOHAM MODI AND PARAMOUNT AVENUES PVT LTD. REPRESENTED BY ITS DIRECTOR SHRI GAURANG MODI.

TITLE TYPICAL SLAB & BEAM DETAILS (BLOCK-A)

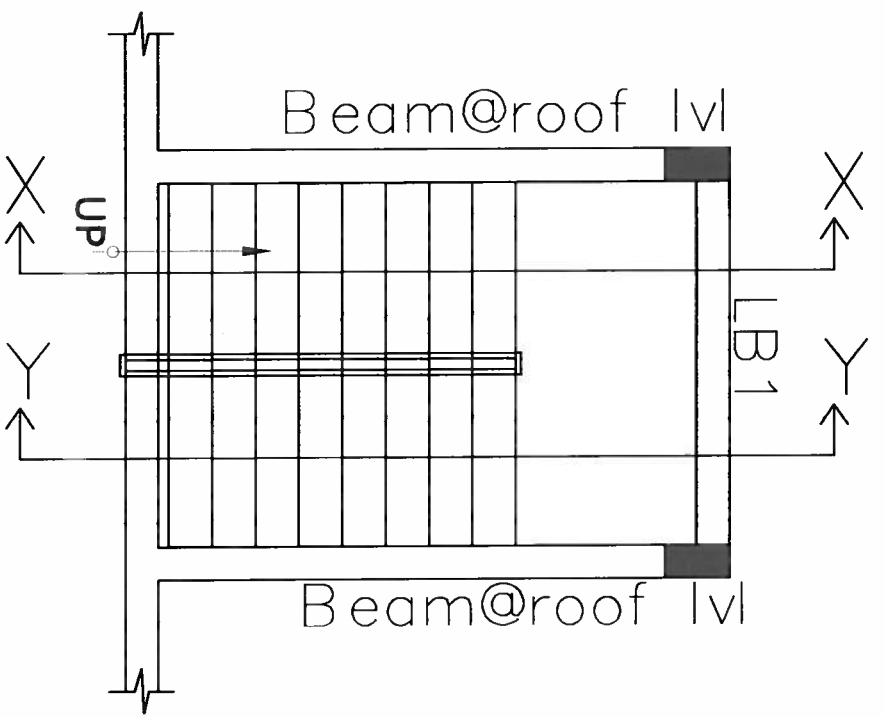
NOTES:
 ① CRANKING OF BARS SHOULD BE DONE @ 1/4 TH OF THE SPAN @ AN ANGLE OF 45°.
 ② MIX SHALL BE M20 (1:1:2.3) WITH W/C RATIO 0.40.
 ③ COVERING FOR MAIN REINFORCEMENT SHALL BE 20mm FOR SLABS & 25mm FOR BEAMS.
 ④ CURING SHALL BE DONE FOR 21 DAYS.

DATE	REV. NO.	REVISIONS	DATE	DEALT	DRAWN	CHECKED
26-10-2017				VINITHA	SAHIRA	VINITHA

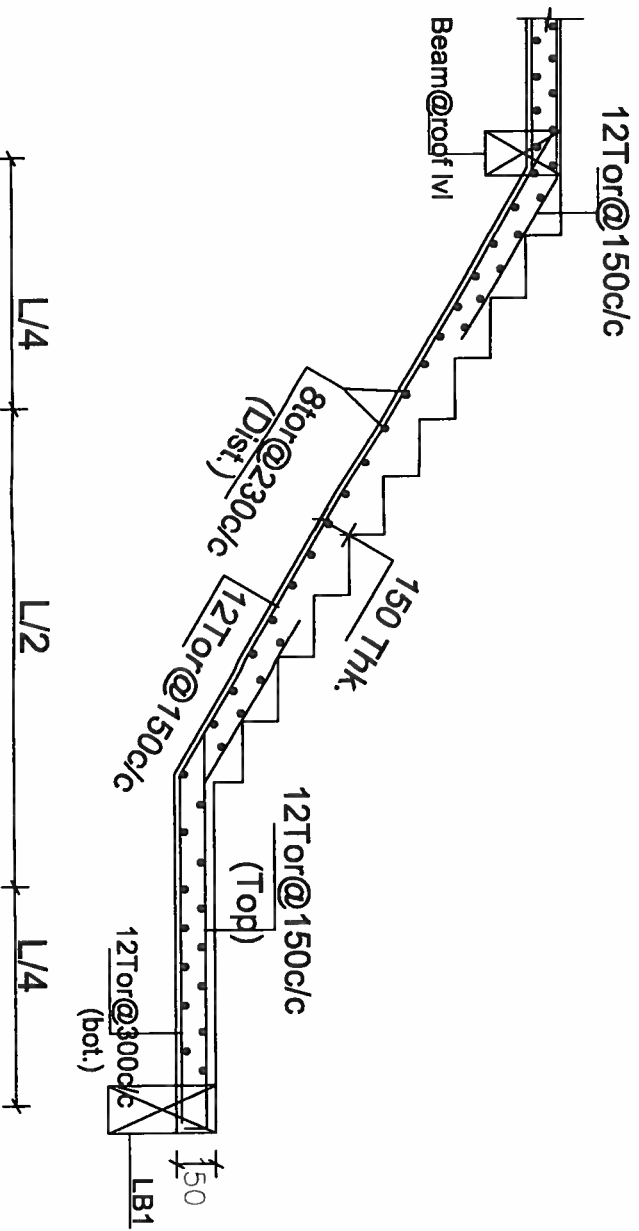
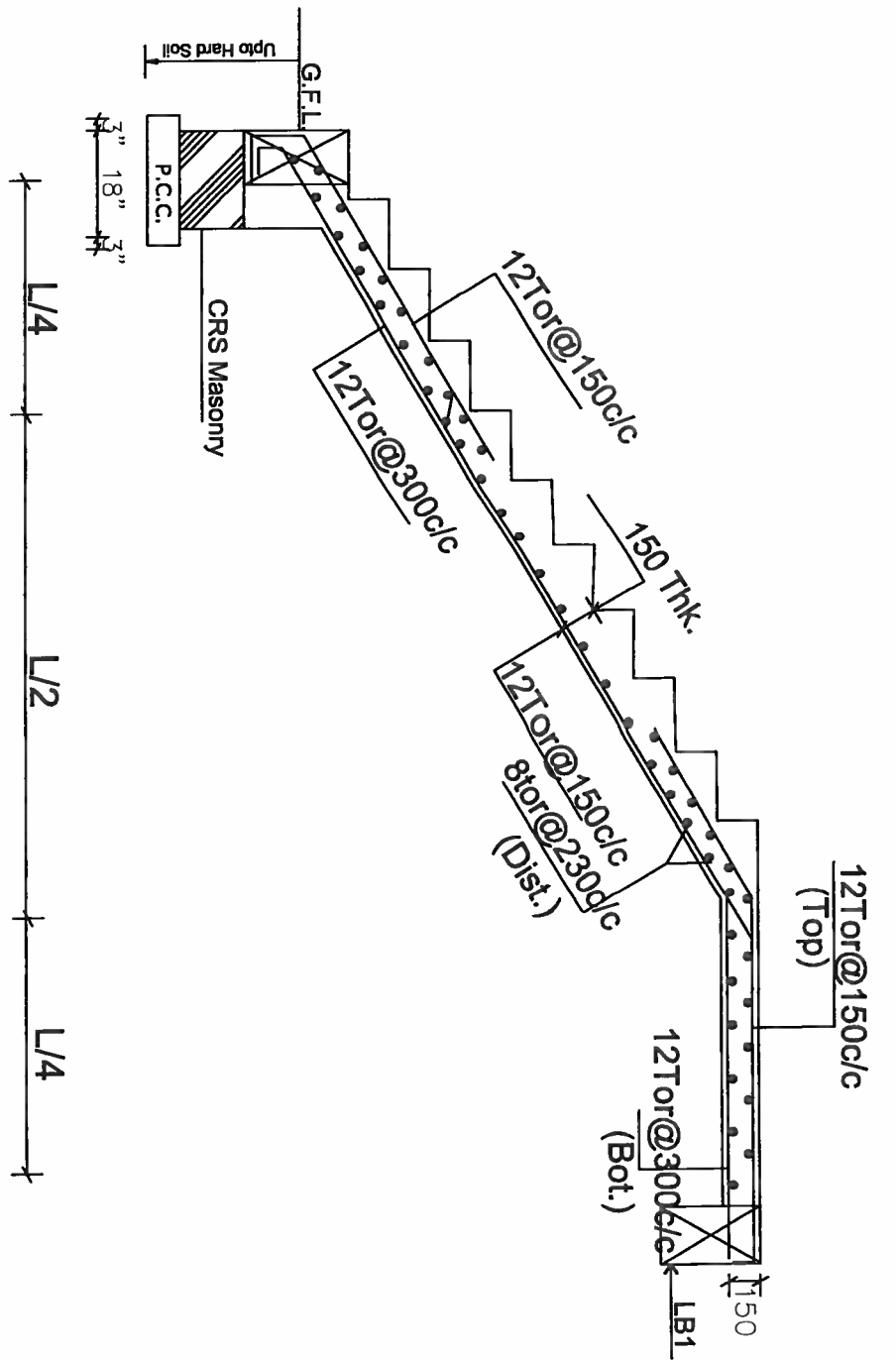
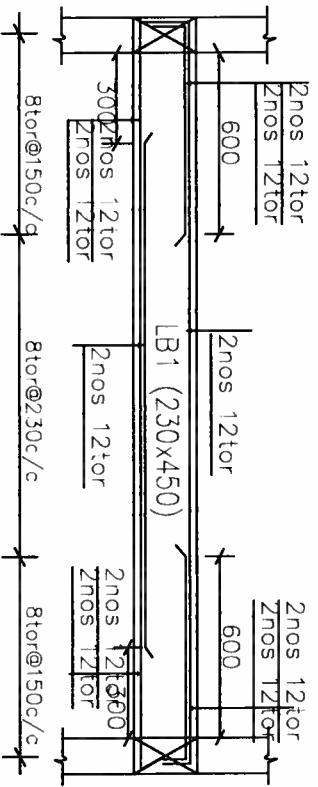
ARCHITECT: ZAKI AHMED CONSULTING ENGINEER

STRUCTURAL ENGINEERS:
 ZAKI & ASSOCIATES
 48 First Avenue Commercial Complex,
 Heera Road, Hyderabad, Telangana, India
 Ph: 83224772

Z-ST/09



STAIRCASE PLAN



SECTION @ Y - Y

PROJECT :
 PLAN SHOWING THE PROPOSED GROUP HOUSING SCHEME IN SY.NO. 19
 OF MALLAPUR VILLAGE, GHMC KAPRA CIRCLE, UPPAL MANDAL, MEDCHAL
 DISTRICT.
 BELONGING TO:
 M/s. GULMOHAR RESIDENCY & JADE ESTATES.
 DEVELOPERS:
 M/s. MODI ESTATES REPRESENTED BY ITS MANAGING PARTNER SHRI.
 SOHAM MODI AND PARAMOUNT AVENUES PVT LTD. REPRESENTED BY ITS
 DIRECTOR SHRI GAURANG MODI.
 TITLE : STAIRCASE DETAILS (3-00K-A)

- NOTES :
- ① GRABBING OF BARS SHOULD BE DONE @ 1/4 TH OF THE SPAN @ AN ANGLE OF 45°.
 - ② MIX SHALL BE M20 (1:1:2.3) WITH W/C RATIO 0.40.
 - ③ COVERING FOR MAIN REINFORCEMENT SHALL BE 20mm FOR SLABS & 25mm FOR BEAMS.
 - ④ CURING SHALL BE DONE FOR 21 DAYS.

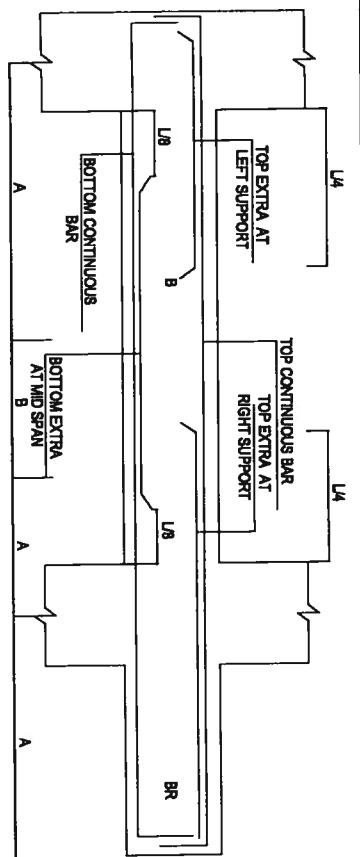
DATE: 18/01/2012	REVISIONS:	DATE: 18/01/2012	REVISIONS:
DESIGNED BY: MRS. VINITA SARBAL	CHECKED BY: MRS. VINITA SARBAL	DATE: 18/01/2012	REVISIONS:
ZAKI & ASSOCIATES STRUCTURAL ENGINEERS 10/10, 1st Floor, NTR Road, Hyderabad - 500017, India Phone: 011-2334772, 011-2334773 Email: zakis@zakiandassociates.com		ZAKI & ASSOCIATES CONSULTING ENGINEER	
ARCHITECT:		ST/08	

BEAM REINFORCEMENT DETAILS

BEAM No.	BEAM SIZE	CONTINUOUS BARS		TOP EXTRA AT LEFT SUPPORT	TOP EXTRA AT RIGHT SUPPORT	BOTTOM EXTRA AT MIDSPAN	SIDE REINFORCEMENT	STIRRUPS AT 'A'	STIRRUPS AT 'B'
		TOP	BOTTOM						
B1	230 x 450	2Nos. 12T or	2Nos. 12T or	2Nos. 12T or	2Nos. 12T or	2Nos. 12T or	---	8T or 150c/c	8T or 230c/c
B2	230 x 600	2Nos. 16T or	2Nos. 16T or	2Nos. 20T or	2Nos. 20T or	2Nos. 20T or	---	8T or 150c/c	8T or 230c/c
B3	230 x 600	2Nos. 20T or	2Nos. 20T or	2Nos. 25T or	2Nos. 25T or	2Nos. 25T or	---	10T or 150c/c	10T or 230c/c
B4	230 x 450	2Nos. 12T or	2Nos. 12T or	2Nos. 16T or	2Nos. 16T or	2Nos. 16T or	---	8T or 150c/c	8T or 230c/c
B5	230 x 450	2Nos. 16T or	2Nos. 16T or	---	---	---	---	8T or 150c/c	8T or 150c/c
B6	230 x 600	2Nos. 25T or	2Nos. 25T or	2Nos. 25T or	2Nos. 25T or	2Nos. 25T or	---	10T or 150c/c	10T or 230c/c
B7	230 x 600	2Nos. 20T or	2Nos. 20T or	---	---	---	---	8T or 150c/c	8T or 150c/c
B8	230 x 600	2Nos. 25T or	2Nos. 25T or	3Nos. 25T or	3Nos. 25T or	3Nos. 25T or	---	10T or 150c/c	10T or 230c/c
B9	230 x 600	2Nos. 25T or	2Nos. 25T or	---	---	---	---	10T or 150c/c	10T or 150c/c
B10	230 x 450	2Nos. 12T or	2Nos. 12T or	---	---	---	---	8T or 150c/c	8T or 230c/c
B11	230 x 450	2Nos. 16T or	2Nos. 16T or	2Nos. 16T or	2Nos. 16T or	2Nos. 16T or	---	8T or 150c/c	8T or 230c/c
RB1	230 x 600	2Nos. 20T or	2Nos. 20T or	2Nos. 25T or	2Nos. 25T or	2Nos. 25T or	---	8T or 150c/c	8T or 230c/c
RB2	230 x 600	2Nos. 16T or	2Nos. 16T or	2Nos. 16T or	2Nos. 16T or	2Nos. 16T or	---	8T or 150c/c	8T or 230c/c
RB3	230 x 600	2Nos. 20T or	2Nos. 20T or	2Nos. 20T or	2Nos. 20T or	2Nos. 20T or	---	8T or 150c/c	8T or 230c/c

SLAB REINFORCEMENT DETAILS

SLAB No.	SLAB THICKNESS MM	ALONG SHORT SPAN		ALONG LONG SPAN		REMARKS
		TOP AT SUPPORTS	BOTTOM AT MIDSPAN	TOP AT SUPPORTS	BOTTOM AT MIDSPAN	
S1	125	8T or 150c/c	8T or 150c/c	8T or 150c/c	8T or 150c/c	Two - Way
S2	100	8T or 150c/c	8T or 150c/c	8T or 230c/c	---	One - Way
S3	125	10T or 150c/c	10T or 150c/c	10T or 230c/c	10T or 230c/c	Two - Way
S4	125	8T or 150c/c	8T or 150c/c	8T or 230c/c	8T or 230c/c	Two - Way
S5	100	10T or 150c/c	10T or 150c/c	8T or 230c/c	---	One - Way
S6	125	8T or 150c/c	8T or 150c/c	8T or 230c/c	8T or 230c/c	Two - Way
RS1	125	10T or 150c/c	10T or 150c/c	10T or 230c/c	10T or 230c/c	Two - Way
RS2	125	10T or 150c/c	10T or 150c/c	10T or 150c/c	10T or 150c/c	Two - Way



PROJECT :

PLAN SHOWING THE PROPOSED GROUP HOUSING SCHEME IN SY. NO. 19 OF MALLAPUR VILLAGE, GHMC KAPRA CIRCLE, UPPAL, MANDAL, MEDCHAL DISTRICT.

BELONGING TO:
M/s. GULMOHAR RESIDENCY & JUDE ESTATES.

DEVELOPERS:
M/s. MODI ESTATES REPRESENTED BY ITS MANAGING PARTNER SHRI. SOHAM MODI AND PARAMOUNT AVENUES PVT LTD. REPRESENTED BY ITS DIRECTOR SHRI GAURANG MODI.

TITLE :

ZINDSLAB & BEAM DETAILS

- NOTES :**
- CRANKING OF BARS SHOULD BE DONE @ 1/4 TH OF THE SPAN @ AN ANGLE OF 45°.
 - MIX SHALL BE M20 (1:1:2) WITH W/C RATIO 0.40.
 - COVERING FOR MAIN REINFORCEMENT SHALL BE 25mm FOR SLABS & 25mm FOR BEAMS.
 - CURING SHALL BE DONE FOR 21 DAYS.

DATE: 25-10-2017	REVISIONS:	DATE:	REVISIONS:
25-10-2017	VENTURA	25-10-2017	VENTURA

PROJECT : ZAKI & ASSOCIATES
 STRUCUTURAL ENGINEERS
 4th Floor, Poojary Commercial Complex,
 Shilpi Rangoli, Hyderabad, 500076, India
 Email: zakimod@rediffmail.com
 Phone: 9849122272

ARCHITECT : ZAKI AHMED
 CONSULTING ENGINEER

CHECKED : VENTURA
Z-ST/107

PROJECT:
 PLAN REVISIONS TO THE PROPOSED DRAFT
 PLANNING ORDINANCE NO. 10-10-17 OF THE
 PLANNING AND ZONING COMMISSION, CITY OF
 WASHINGTON, DISTRICT OF COLUMBIA

APPLICANT:
 THE BOARD OF SUPERVISORS & JUDGES OF THE
 DISTRICT OF COLUMBIA

PREPARED BY:
 ZONING & PLANNING DEPARTMENT
 DISTRICT OF COLUMBIA

TITLE:
 2ND STAGE B DEVELOPMENT

REVISIONS:
 (1) CORRECTED THE PROPOSED ZONING DISTRICT
 FROM R-10 TO R-100
 (2) CORRECTED THE PROPOSED ZONING DISTRICT
 FROM R-100 TO R-1000
 (3) CORRECTED THE PROPOSED ZONING DISTRICT
 FROM R-1000 TO R-10000

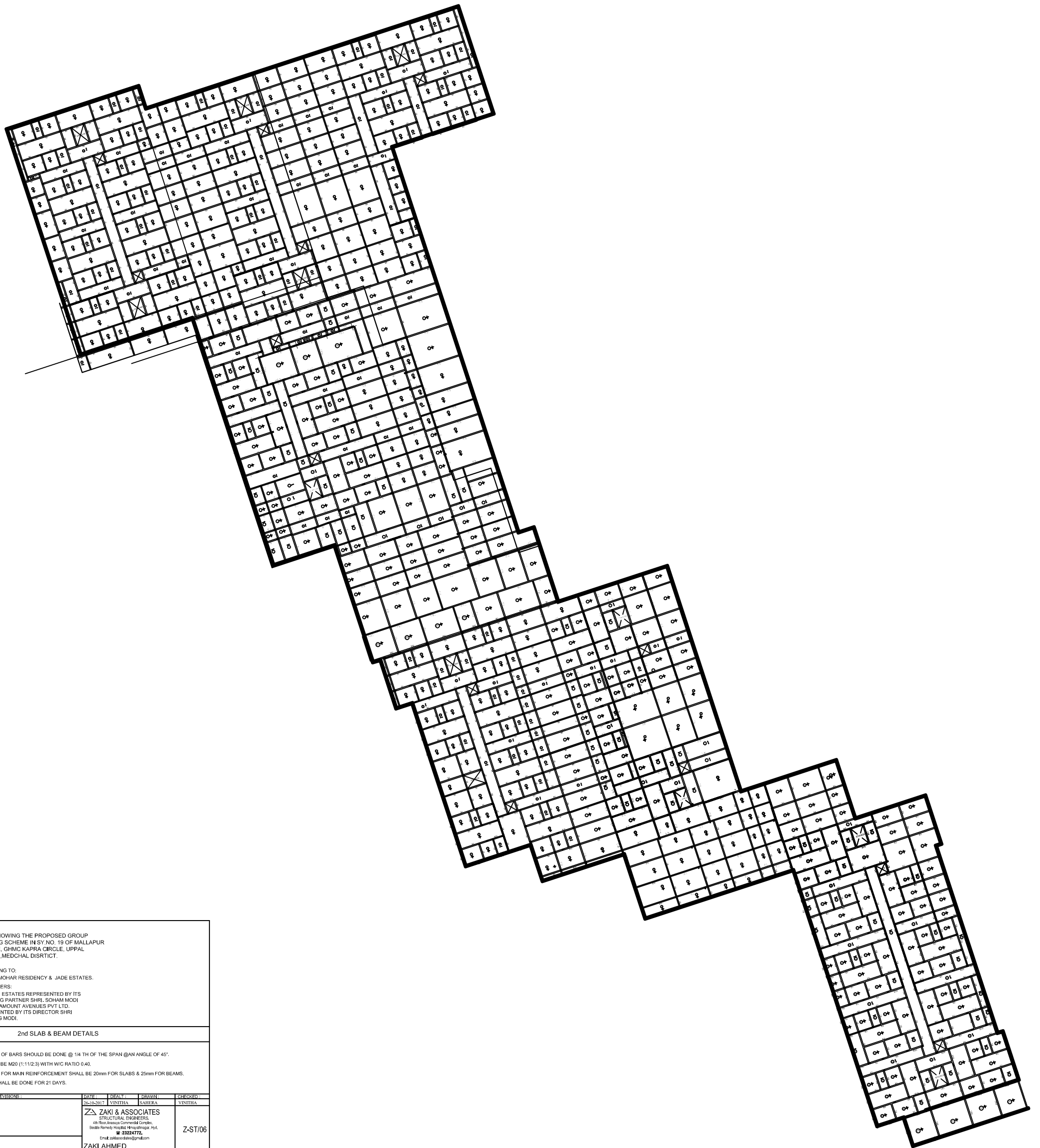
DATE:
 10/10/17

SCALE:
 AS SHOWN

PROJECT LOCATION:
 DISTRICT OF COLUMBIA

PROJECT NUMBER:
 10-10-17





PROJECT :
 PLAN SHOWING THE PROPOSED GROUP HOUSING SCHEME IN SY. NO. 19 OF MALLAPUR VILLAGE, CHMIG KAPRA CIRCLE, UPPAL MANDAL, MEDCHAL DISTRICT.

BELONGING TO:
 M/s. GULMOHAR RESIDENCY & JADE ESTATES.

DEVELOPERS:
 M/s. MODI ESTATES REPRESENTED BY ITS MANAGING PARTNER SHRI. SOHAM MODI AND PARAMOUNT AVENUES PVT LTD. REPRESENTED BY ITS DIRECTOR SHRI GAURANG MODI.

TITLE: 2nd SLAB & BEAM DETAILS

NOTES:

- ① CRANKING OF BARS SHOULD BE DONE @ 1/4 TH OF THE SPAN @ AN ANGLE OF 45°.
- ② MIX SHALL BE M20 (1:1:2:3) WITH W/C RATIO 0.40.
- ③ COVERING FOR MAIN REINFORCEMENT SHALL BE 20mm FOR SLABS & 25mm FOR BEAMS.
- ④ CURING SHALL BE DONE FOR 21 DAYS.

DATE	DESIGN	DRAWN	CHECKED
26/06/2017	VENITHA	AMARA	VENITHA

ZAKI & ASSOCIATES
 STRUCTURAL ENGINEERS
 4th Floor Ananta Commercial Complex,
 Sankar Reddy Hospital Main Road, Hyderabad.
 ☎ 23224772
 Email: zakiasociates@gmail.com

ZAKI AHMED
 CONSULTING ENGINEER

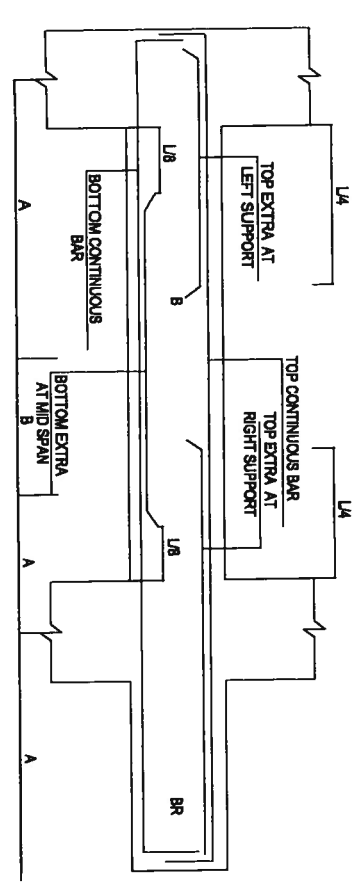
Z-ST/06

BEAM REINFORCEMENT DETAILS

BEAM No.	BEAM SIZE	TOP CONTINUOUS BARS	BOTTOM CONTINUOUS BARS	TOP EXTRA AT LEFT SUPPORT	TOP EXTRA AT RIGHT SUPPORT	BOTTOM EXTRA AT MID SPAN	SIDE REINFORCEMENT	STIRRUPS AT 'A'	STIRRUPS AT 'B'
B1	230 x 450	2Nos. 12T or	2Nos. 12T or	2Nos. 12T or	2Nos. 12T or	2Nos. 12T or	—	8T or 150c/c	8T or 230c/c
B2	230 x 600	2Nos. 16T or	2Nos. 16T or	2Nos. 20T or	2Nos. 20T or	2Nos. 20T or	—	8T or 150c/c	8T or 230c/c
B3	230 x 600	2Nos. 20T or	2Nos. 20T or	2Nos. 25T or	2Nos. 25T or	2Nos. 25T or	—	10T or 150c/c	10T or 230c/c
B4	230 x 450	2Nos. 12T or	2Nos. 12T or	2Nos. 16T or	2Nos. 16T or	2Nos. 16T or	—	8T or 150c/c	8T or 230c/c
B5	230 x 450	2Nos. 16T or	2Nos. 16T or	—	—	—	—	8T or 150c/c	8T or 150c/c
B6	230 x 600	2Nos. 25T or	2Nos. 25T or	2Nos. 25T or	2Nos. 25T or	2Nos. 25T or	—	10T or 150c/c	10T or 230c/c
B7	230 x 600	2Nos. 20T or	2Nos. 20T or	—	—	—	—	8T or 150c/c	8T or 150c/c
B8	230 x 600	2Nos. 25T or	2Nos. 25T or	3Nos. 25T or	3Nos. 25T or	3Nos. 25T or	—	10T or 150c/c	10T or 230c/c
B9	230 x 600	2Nos. 25T or	2Nos. 25T or	—	—	—	—	10T or 150c/c	10T or 150c/c
B10	230 x 450	2Nos. 12T or	2Nos. 12T or	—	—	—	—	8T or 150c/c	8T or 230c/c
B11	230 x 450	2Nos. 16T or	2Nos. 16T or	—	—	—	—	8T or 150c/c	8T or 230c/c
RB1	230 x 600	2Nos. 20T or	2Nos. 20T or	—	—	—	—	8T or 150c/c	8T or 230c/c
RB2	230 x 600	2Nos. 16T or	2Nos. 16T or	—	—	—	—	8T or 150c/c	8T or 230c/c
RB3	230 x 600	2Nos. 20T or	2Nos. 20T or	—	—	—	—	8T or 150c/c	8T or 230c/c

SLAB REINFORCEMENT DETAILS

SLAB No.	SLAB THICKNESS MM	ALONG SHORT SPAN		ALONG LONG SPAN		REMARKS
		TOP AT SUPPORTS	BOTTOM AT MIDSPAN	TOP AT SUPPORTS	BOTTOM AT MIDSPAN	
S1	125	8T or 150c/c	8T or 150c/c	8T or 150c/c	8T or 150c/c	Two - Way
S2	100	8T or 150c/c	8T or 150c/c	8T or 230c/c	—	One - Way
S3	125	10T or 150c/c	10T or 150c/c	10T or 230c/c	10T or 230c/c	Two - Way
S4	125	8T or 150c/c	8T or 150c/c	8T or 230c/c	8T or 230c/c	Two - Way
S5	100	10T or 150c/c	10T or 150c/c	8T or 230c/c	—	One - Way
S6	125	8T or 150c/c	8T or 150c/c	8T or 230c/c	8T or 230c/c	Two - Way
RS1	125	10T or 150c/c	10T or 150c/c	10T or 230c/c	10T or 230c/c	Two - Way
RS2	125	10T or 150c/c	10T or 150c/c	10T or 150c/c	10T or 150c/c	Two - Way



PROJECT :
 PLAN SHOWING THE PROPOSED GROUP HOUSING SCHEME IN SY. NO. 19 OF MALLAPUR VILLAGE, SHRI KAPRA CIRCLE, UPPAL MANDAL, MEDICAL DISTRICT.

BELONGING TO:
 M/s. GULMOHAR RESIDENCY & JADE ESTATES.
DEVELOPERS:
 M/s. MODI ESTATES REPRESENTED BY ITS MANAGING PARTNER SHRI. SOHAM MODI AND PARAMOUNT AVENUES PVT.LTD. REPRESENTED BY ITS DIRECTOR SHRI GAURANG MODI.

TITLE :
 1st SLAB & BEAM DETAILS

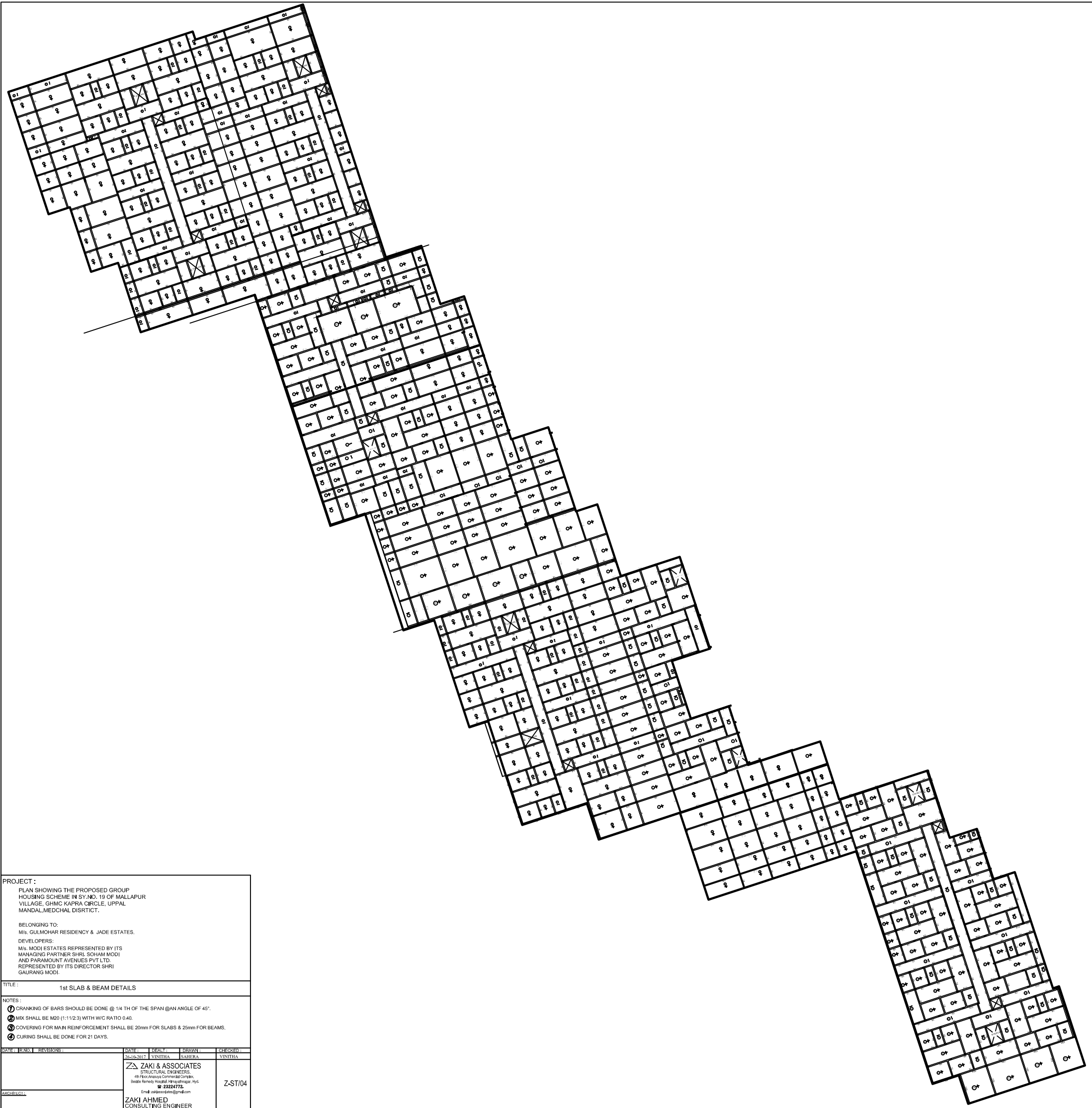
- NOTES :**
- ① CHANGING OF BARS SHOULD BE DONE @ 1/4 TH OF THE SPAN @ AN ANGLE OF 45°.
 - ② MIX SHALL BE M20 (1:1.75:3) WITH W/C RATIO 0.40.
 - ③ COVERING FOR MAIN REINFORCEMENT SHALL BE 20mm FOR SLABS & 25mm FOR BEAMS.
 - ④ CURING SHALL BE DONE FOR 21 DAYS.

DATE	REVISION	BY	CHECKED
25.10.2017	1	YVINTHA	YVINTHA

ZAKI & ASSOCIATES
 REGISTERED CIVIL ENGINEERS
 487, Redwood Road, Hyderabad, India
 Phone: 98491 23247, 98491 23248
 Email: zakimod@gmail.com, zakimod@yahoo.com

ZAKI AHMED
 CONSULTING ENGINEER

Z-ST/05



PROJECT :
 PLAN SHOWING THE PROPOSED GROUP HOUSING SCHEME IN SY.NO. 19 OF MALLAPUR VILLAGE, GHMC KAPRA CIRCLE, UPPAL MANDAL, MEDCHAL DISTRICT.

BELONGING TO:
 M/s. GULMOHAR RESIDENCY & JADE ESTATES.

DEVELOPERS:
 M/s. MODI ESTATES REPRESENTED BY ITS MANAGING PARTNER SHRI. SOHAM MODI AND PARAMOUNT AVENUES PVT LTD. REPRESENTED BY ITS DIRECTOR SHRI GAURANG MODI.

TITLE:
 1st SLAB & BEAM DETAILS

NOTES:
 ① CRANKING OF BARS SHOULD BE DONE @ 1/4 TH OF THE SPAN @ AN ANGLE OF 45°.
 ② MIX SHALL BE M20 (1:1:2:3) WITH W/C RATIO 0.40.
 ③ COVERING FOR MAIN REINFORCEMENT SHALL BE 20mm FOR SLABS & 25mm FOR BEAMS.
 ④ CURING SHALL BE DONE FOR 21 DAYS.

DATE	BY	REVISIONS	DATE	BY	DRAWN	CHECKED
26/06/2017	VINITHA			AMRITA		VINITHA

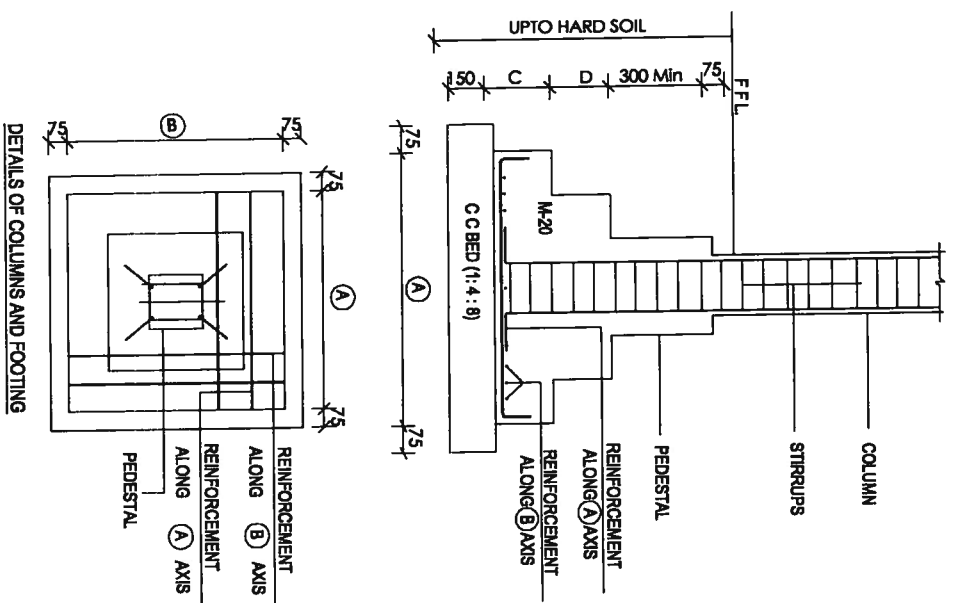
ZAKI & ASSOCIATES
 STRUCTURAL ENGINEERS
 4th Floor Anandya Commercial Complex,
 Beside Ramoju Hospital, Hyderabad-15c.
 ☎ 23224772
 Email: zakiasociates@gmail.com

ZAKI AHMED
 CONSULTING ENGINEER

Z-ST/04

FOUNDATION DETAILS

COLUMN No.	COLUMN SIZE		COLUMN MIX	COLUMN SECTION	PEDESTAL	PEDESTAL MIX	FOOTING SIZE				REINFORCEMENT		REMARKS
	a	b					A	B	C	D	ALONG 'A' AXIS	ALONG 'B' AXIS	
C1	230	450	M-20 Fe-500	8nos 20lor 8T or @200c/c 2-Setis	375x450	M-20	1750	1750	225	225	14nos. 12T or (Bot.)	14nos. 12T or (Bot.)	—
C2	230	600	M-25 Fe-500	8nos 20lor 8T or @200c/c 2-Setis	375x600	M-25	2000	2000	300	300	18nos. 12T or (Bot.)	18nos. 12T or (Bot.)	—
C3	230	450	M-20 Fe-500	8nos 20lor 8T or @200c/c 2-Setis	375x450	M-20	1750	1750	225	225	14nos. 12T or (Bot.)	14nos. 12T or (Bot.)	—
C4	230	600	M-20 Fe-500	8nos 20lor 8T or @200c/c 2-Setis	375x600	M-20	2000	2000	300	300	18nos. 12T or (Bot.)	18nos. 12T or (Bot.)	—
C5	230	600	M-25 Fe-500	10nos 20lor 8T or @200c/c 2-Setis	375x600	M-25	1900	1900	300	300	18nos. 12T or (Bot.)	18nos. 12T or (Bot.)	—
C6	230	600	M-25 Fe-500	10nos 25lor 8T or @200c/c 2-Setis	375x600	M-25	2500	2500	375	375	18nos. 16T or (Bot.)	18nos. 16T or (Bot.)	—
C7	230	600	M-25 Fe-500	10nos 25lor 8T or @200c/c 2-Setis	375x600	M-25	2500	2500	375	375	18nos. 16T or (Bot.)	18nos. 16T or (Bot.)	—
C8	230	450	M-20 Fe-500	8nos 20lor 8T or @200c/c 2-Setis	375x450	M-20	1750	1750	225	225	14nos. 12T or (Bot.)	14nos. 12T or (Bot.)	—
C9	230	600	M-25 Fe-500	4nos 25lor 8nos 20lor 8T or @200c/c 2-Setis	375x600	M-25	2300	2300	300	300	22nos. 12T or (Bot.)	22nos. 12T or (Bot.)	—
C10	230	750	M-25 Fe-500	4nos 25lor 8nos 20lor 10T or @200c/c 2-Setis	450x750	M-25	2750	2750	375	375	20nos. 16T or (Bot.)	20nos. 16T or (Bot.)	—



PROJECT :
 PLAN SHOWING THE PROPOSED GROUP HOUSING SCHEME IN SY.NO. 19 OF MALLAPUR VILLAGE, GNMC KAPPA CIRCLE, UPPAL MANDAL, MEDICAL DISTRICT.

BELONGING TO:
 M/s. GULMOHAR RESIDENCY & JADE ESTATES.

DEVELOPERS:
 M/s. MODI ESTATES REPRESENTED BY ITS MANAGING PARTNER SRI. SOMAN MODI AND PARTNER AVINASH PVT LTD. REPRESENTED BY ITS DIRECTOR SRI. GAURANG MODI.

TITLE :
 COLUMN & FOOTING DETAILS

NOTES :

- FOUNDATION IS DESIGNED FOR 0.4 FLOOR.
- S.B.C IS CONSIDERED AS 30 T/C.M.
- COVERING FOR MAIN REINFORCEMENT SHALL BE 40mm FOR COLUMNS & 50mm FOR FOOTINGS.
- STRUCTURE IS DESIGNED FOR BREMSFORCES AS I.S. 1883 ZONE III CONDITIONS.

DATE : 25-10-2017 **REVISIONS :**

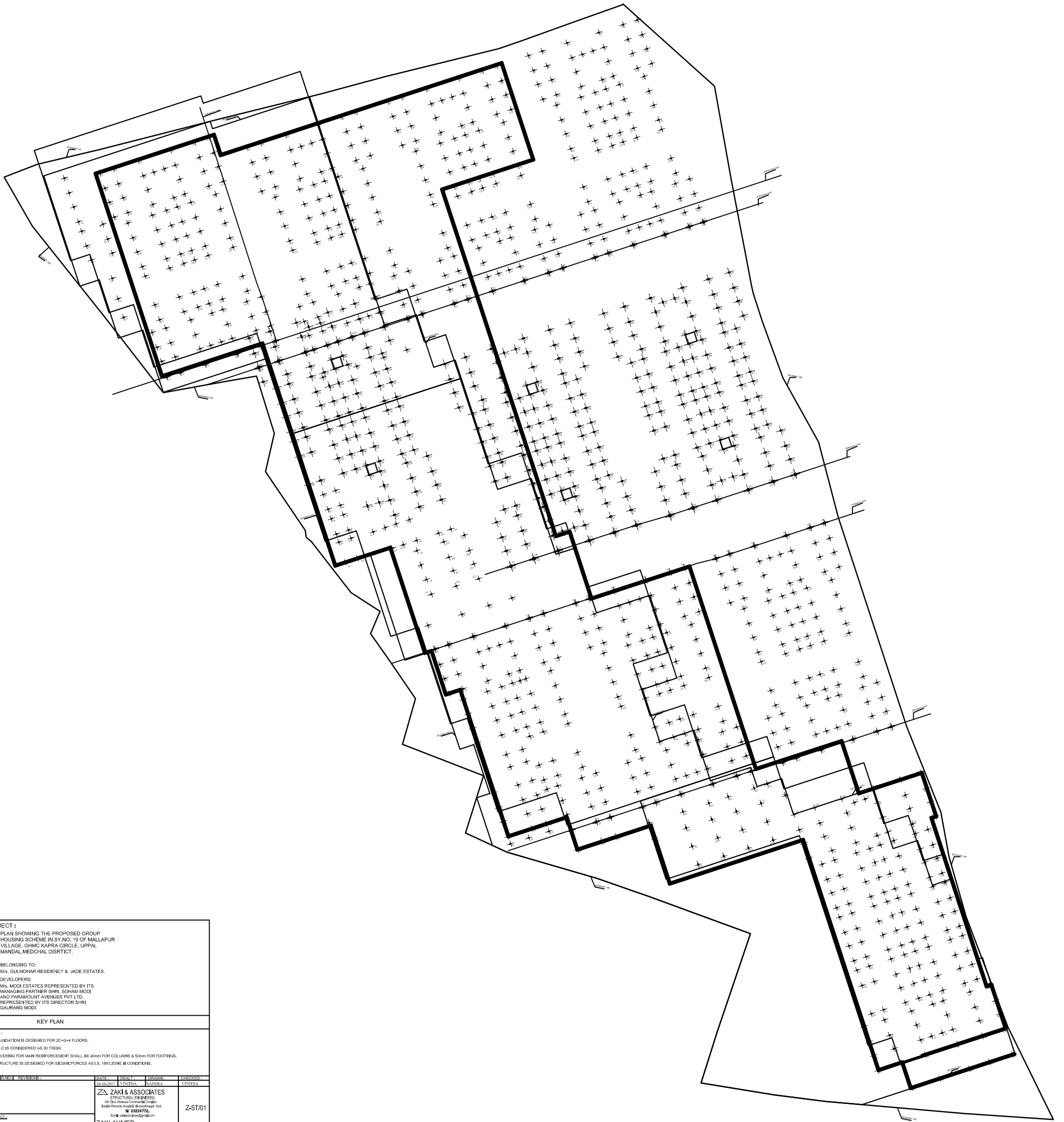
NO.	REVISIONS	DATE
1		25-10-2017

DRAWN : YNITHA **CHECKED :** YNITHA

ZAKI & ASSOCIATES
 STRUCTURAL ENGINEERS
 2nd Floor, The Park Hotel, Hyderabad-500004
 Ph: 9848324771, 9848324772
 Email: zakis@zakiassociates.com

ZAKI AHMED
 CONSULTING ENGINEER

Z-ST/02



PROJECT :
 PLAN SHOWING THE PROPOSED GROUP HOUSING SCHEME IN SY.NO. 19 OF MALLAPUR VILLAGE, GHMC KAPRA CIRCLE, UPPAL MANDAL, MEDCHAL DISTRICT.

BELONGING TO:
 M/s. GULMOHAR RESIDENCY & JADE ESTATES.

DEVELOPERS:
 M/s. MODI ESTATES REPRESENTED BY ITS MANAGING PARTNER SHRI. SOHAM MODI AND PARAMOUNT AVENUES PVT LTD. REPRESENTED BY ITS DIRECTOR SHRI GAURANG MODI.

TITLE :
 KEY PLAN

NOTES :

- ① FOUNDATION IS DESIGNED FOR 20-6+4 FLOORS.
- ② S.B.C IS CONSIDERED AS 30 TISGA.
- ③ COVERING FOR MAIN REINFORCEMENT SHALL BE 40mm FOR COLUMNS & 50mm FOR FOOTINGS.
- ④ STRUCTURE IS DESIGNED FOR SEISMIC FORCES AS I.S. 1893 ZONE III CONDITIONS.

DATE	DESIGN	CHECKED	DATE	DESIGN	CHECKED
12-10-2017	VINITHA	KASHIKA			VINITHA

ZAKI & ASSOCIATES
 STRUCTURAL ENGINEERS,
 4/3 Raju Avenue Commercial Complex,
 Brindavan Road, Hyderabad, India.
 @ 2824772.
 Email: zakis@zakiassociates.com

ZAKI AHMED
 CONSULTING ENGINEER

Z-ST01