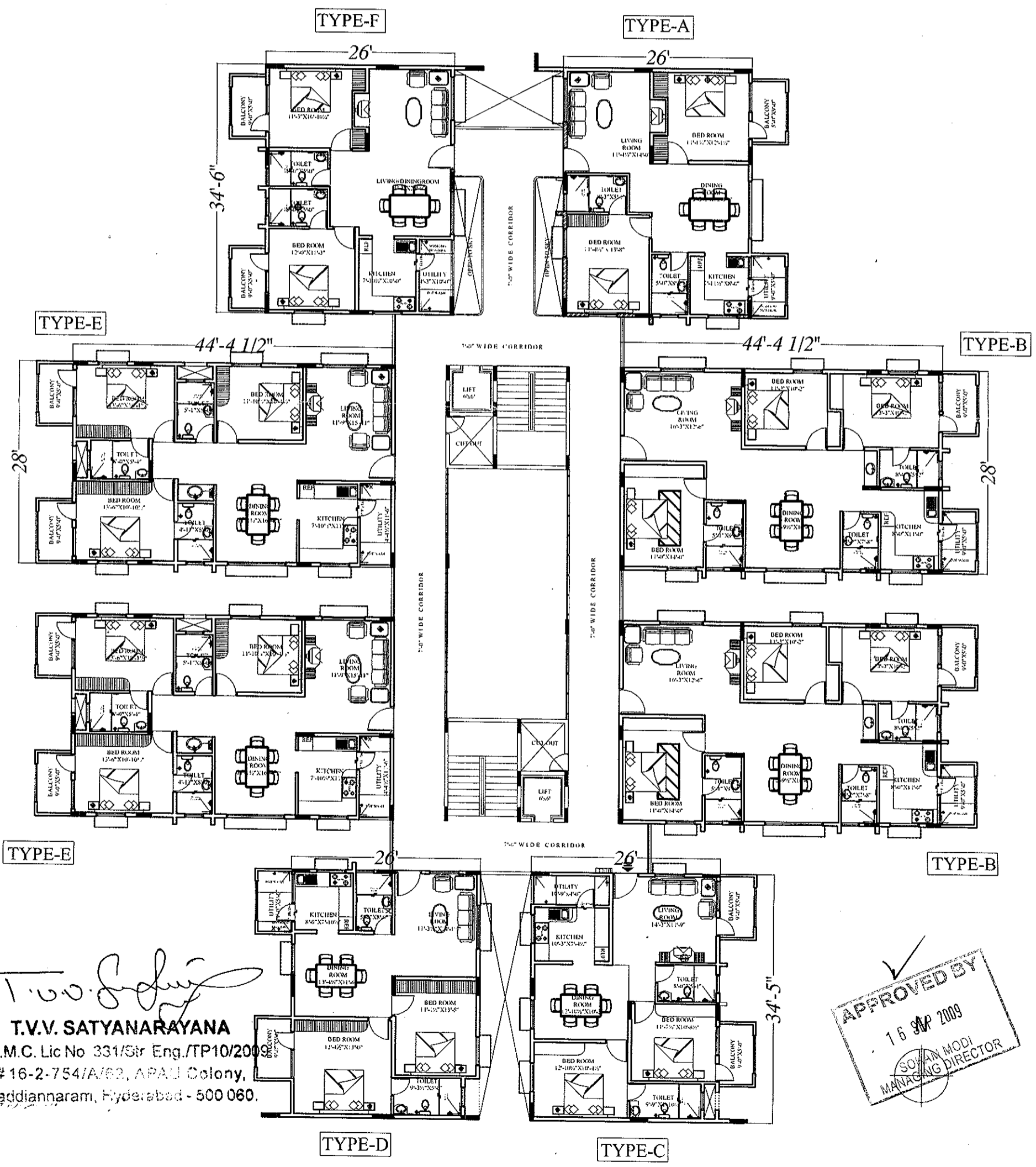
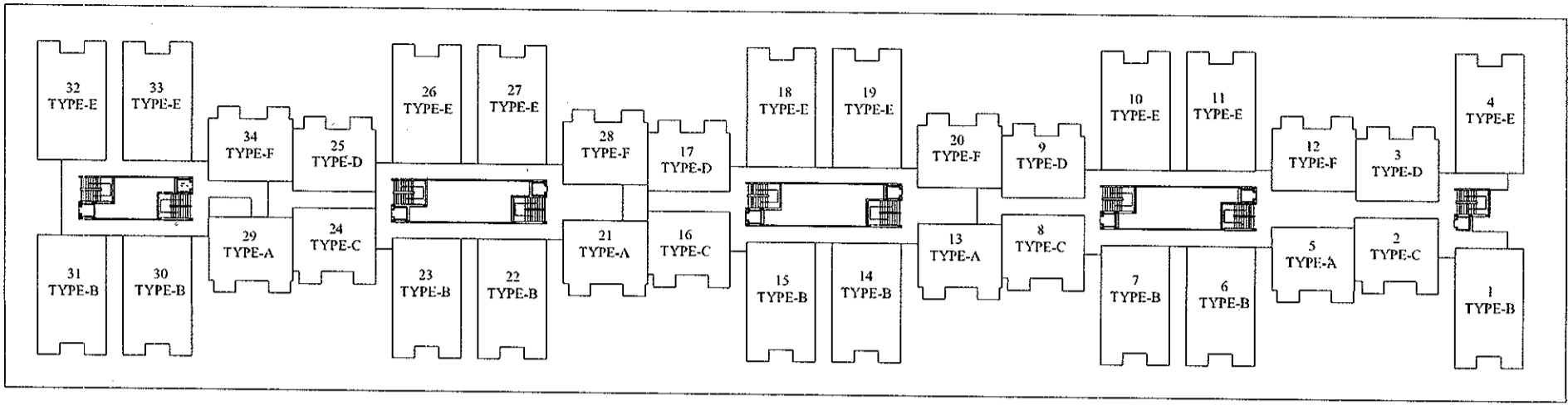


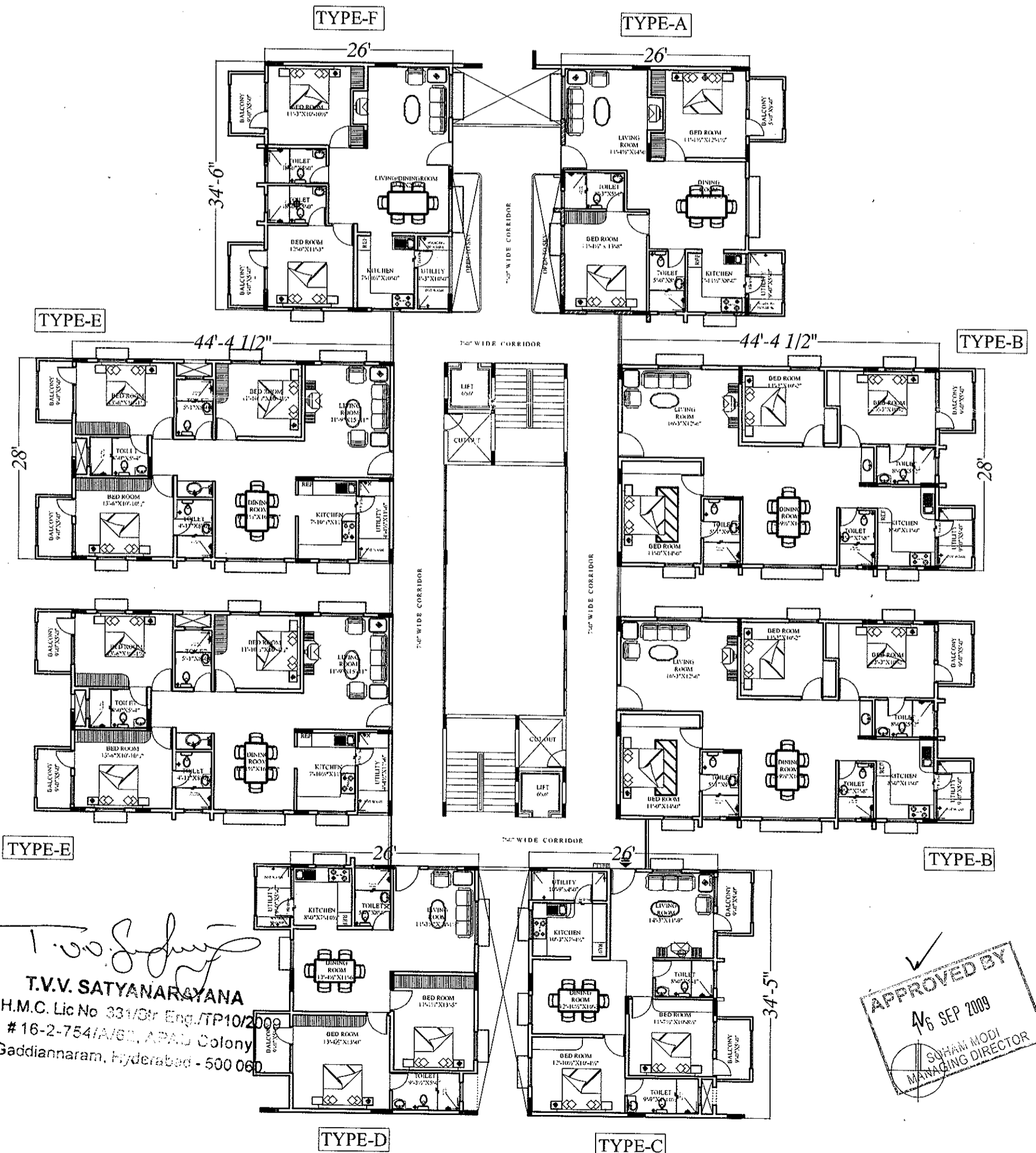
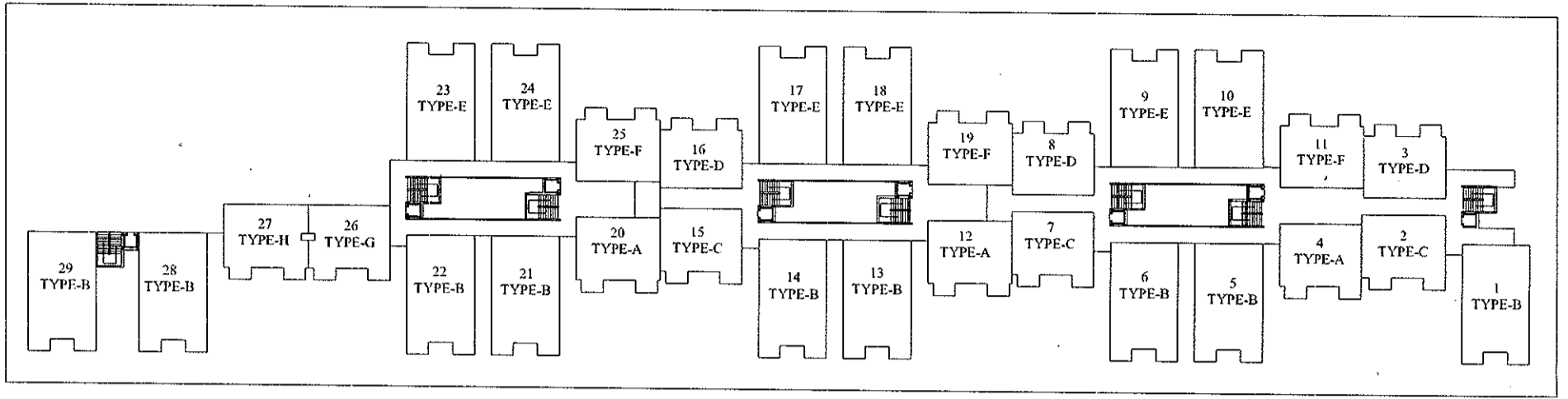
PLAN SHOWING THE TYPICAL FLOOR PLAN OF BLOCK-A OF GREENWOOD ESTATES IN SY. NO. 203,204,205,206 & 202/P OF KOWKUR VILLAGE, ALWAL MUNICIPALITY, MALKAJGIRI MANDAL, RANGA REDDY DISTRICT



T.V.V. Satyanarayana
T.V.V. SATYANARAYANA
 S.H.M.C. Lic No 331/Str Eng./TP10/2009
 #16-2-754/A/62, APAU Colony,
 Gaddiannaram, Hyderabad - 500 060.

APPROVED BY
 16 SEP 2009
 SOHAN MODI
 MANAGING DIRECTOR

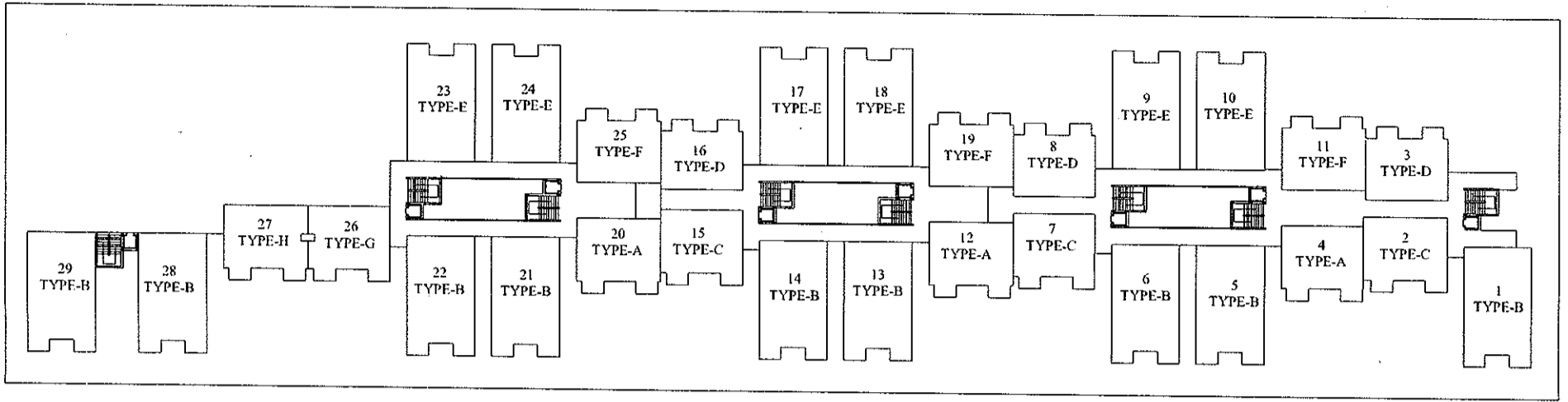
PLAN SHOWING THE TYPICAL FLOOR PLAN OF BLOCK-C OF GREENWOOD ESTATES IN SY. NO. 203,204,205,206 & 202/P OF KOWKUR VILLAGE, ALWAL MUNICIPALITY, MALKAJGIRI MANDAL, RANGA REDDY DISTRICT



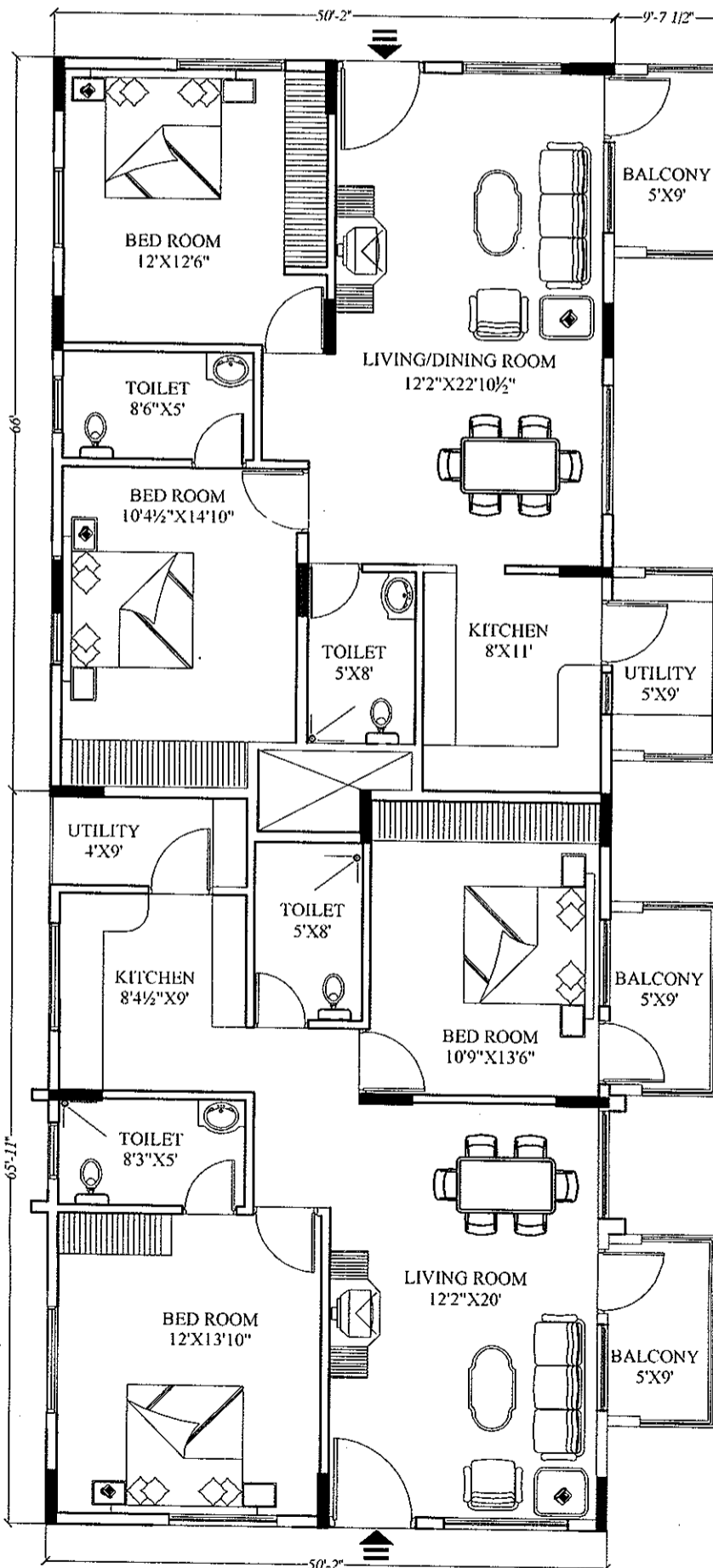
T.V.V. Satyanarayana
T.V.V. SATYANARAYANA
 G.H.M.C. Lic No 331/3r Eng./TP10/2009
 # 16-2-754/A/6L APAD Colony
 Gaddiannaram, Hyderabad - 500 060

APPROVED BY
 46 SEP 2009
 SUSHAM MODI
 MANAGING DIRECTOR

PLAN SHOWING THE TYPICAL FLOOR PLAN OF BLOCK-C OF GREENWOOD ESTATES IN SY. NO. 203,204,205,206 & 202/P OF KOWKUR VILLAGE, ALWAL MUNICIPALITY, MALKAJGIRI MANDAL, RANGA REDDY DISTRICT



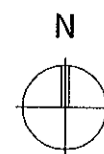
TYPE-G
2 BEDROOM - 1,200 Sft.



TYPE-H
2 BEDROOM - 1,200 Sft.

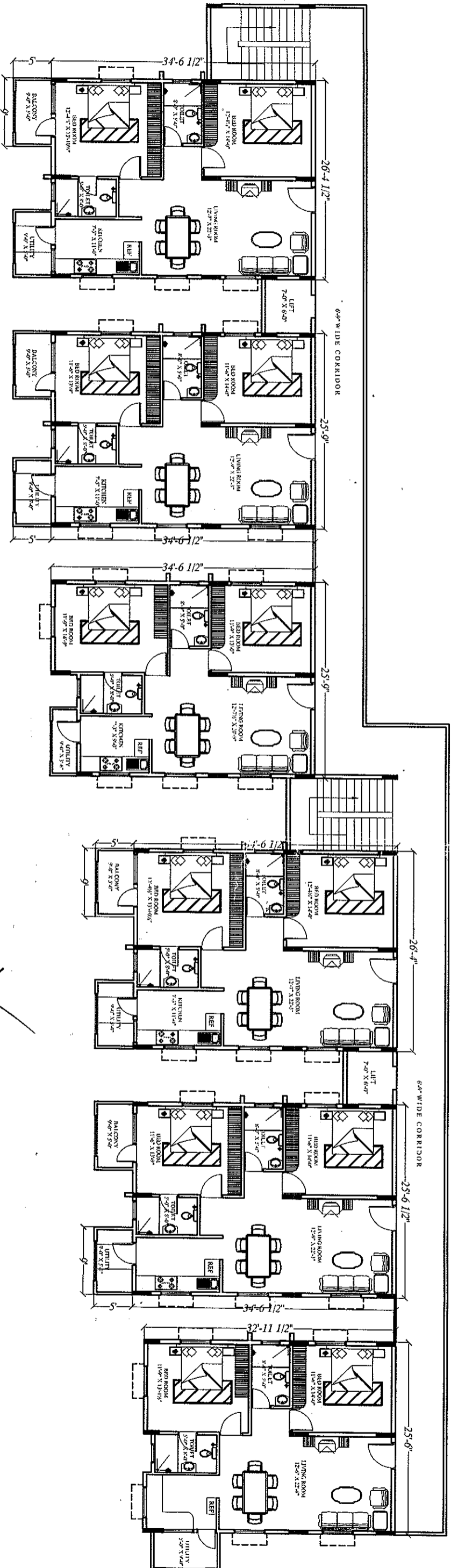
T.V.V. SATYANARAYANA

G.H.M.C. Lic No 031/Sir Eng./TP10/2009
16-2-754/A/62, AFAU Colony,
Gaddiannaram, Hyderabad - 500 060.



APPROVED BY
15 SEP 2009
SOHAM MOUJ
MANAGING DIRECTOR

PLAN SHOWING THE TYPICAL FLOOR PLAN OF BLOCK-B OF GREENWOOD
 ESTATES IN SY. NO. 203,204,205,206 & 202/P OF KOWKUR VILLAGE, ALWAL
 MUNICIPALITY, MALKAJGIRI MANDAL, RANGA REDDY DISTRICT



T.V.V. Satyanarayana
T.V.V. SATYANARAYANA
 GH.M.C. Lic No 331/SW/ ENGT/P10/2009
 # 16-2-754/A/62, APJAU Colony,
 Gaddianam, Hyderabad - 500 060.

APPROVED BY
 19 SEP 2009
 SOHAM MODI
 MANAGING DIRECTOR

