



**HOME-LINE**  
**DEEPA**  
HEIGHTS

**HOME-LINE**  
**DHRUVA**  
HEIGHTS

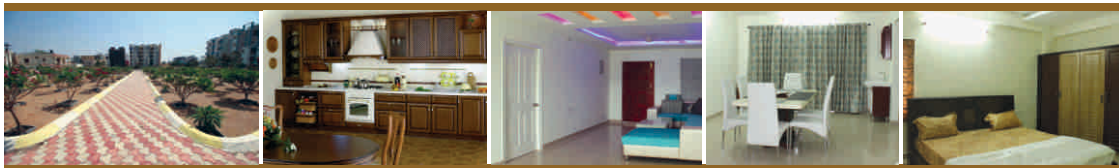
**18 Flats**  
**on 1,110 sq.yds**  
**at Yapral, Sec-bad**

### Salient Features

- Plans approved by GHMC
- Clear title
- 18 flats on 1,110 sq.yds.
- 3 BHK flats of 1,480 to 1,650 sft.
- Design as per Vaastu
- Municipal water supply
- Landscaped gardens
- 24 hours security with CCTV
- 1KVA generator backup for each flat and common amenities
- 2 acre GHMC Park

### Surrounding Development

- Quiet and peaceful locality
- Near EME Golf Course
- RSI Club
- Schools: Bhavan's, Indus International School, CAL Public School & Kendriya Vidyalaya
- Hospitals: Paulomi, Xenia, Tulasi & Military Hospital
- Multiplex Theatres: Talluri & Radhika Asian Cinemas



Sales & Project Management by:



Owned & Developed by:



**Call :**  
**99499 93587**  
**95505 42623**

For free copy of brochure SMS your name and address to 95505 42623